

## RESEARCH ARTICLE

ESPL WILEY

# Morphology and evolution of supraglacial hummocks on debris-covered Himalayan glaciers

Oliver T. Bartlett<sup>1,2,3</sup>  | Felix S.L. Ng<sup>2</sup>  | Ann V. Rowan<sup>2</sup> 

<sup>1</sup>College of Life and Environmental Sciences,  
University of Exeter, Exeter, UK

<sup>2</sup>Department of Geography, University of  
Sheffield, Sheffield, UK

<sup>3</sup>Geography, Environment and Planning,  
School of Life and Medical Sciences,  
University of Hertfordshire, Hatfield, UK

## Correspondence

Ann V. Rowan, Department of Geography,  
University of Sheffield, Sheffield S10 2TN, UK.  
Email: a.rowan@sheffield.ac.uk

## Abstract

Thick supraglacial debris layers often have an undulating, hummocky topography that influences the lateral transport of debris and meltwater and provides basins for supraglacial ponds. The role of ablation and other processes associated with supraglacial debris in giving rise to this hummocky topography is poorly understood. Characterizing hummocky topography is a first step towards understanding the feedbacks driving the evolution of debris-covered glacier surfaces and their potential impacts on mass balance, hydrology and glacier dynamics. Here we undertake a geomorphological assessment of the hummocky topography on five debris-covered glaciers in the Everest region of the central Himalaya. We characterize supraglacial hummocks through statistical analyses of their vertical relief and horizontal geometry. Our results establish supraglacial hummocks as a distinct landform. We find that a typical hummock has an elongation ratio of 1.1:1 in the direction of ice flow, length of  $214 \pm 109$  m and width of  $192 \pm 88$  m. Hummocky topography has a greater amplitude across-glacier ( $15.4 \pm 10.9$  m) compared to along the glacier flow line ( $12.6 \pm 8.3$  m). Consequently, hummock slopes are steeper in the across-glacier direction ( $8.7 \pm 4.3^\circ$ ) than in the direction of ice flow ( $5.6 \pm 4.0^\circ$ ). Longer, wider and higher-amplitude hummocks are found on larger glaciers. We postulate that directional anisotropy in the hummock topography arises because, while the pattern of differential ablation driving topography evolution is moderated by processes including the gravitational redistribution of debris across the glacier surface, it also inherits an orientation preference from the distribution of englacial debris in the underlying ice. Our morphometric data inform future efforts to model these interactions, which should account for additional factors such as the genesis of supraglacial ponds and ice cliffs and their impact on differential ablation.

## KEYWORDS

ablation, debris, glacier, Himalaya, topography

## 1 | INTRODUCTION

Debris-covered glaciers are widespread throughout tectonically active mountain ranges (Herreid & Pellicciotti, 2020) where high rates of rock uplift provide sediment to glacier surfaces by landsliding (Schomacker, 2008). In High Mountain Asia, 30% of the ice mass in glacier ablation areas is covered with rock debris (Kraaijenbrink et al., 2017). Supraglacial debris occupies approximately 36% of the glacierized area in the Everest region, and the area of debris-covered

ice in this region has doubled between 1962 and 2011 (Thakuri et al., 2014). Spatial variability in debris thickness results in differential ablation and heterogeneous melt production across the debris-covered area (e.g. Nicholson & Benn, 2006). Supraglacial debris layers between about 0.01 and 0.1 m thick enhance sub-debris melt by reducing albedo, whereas debris layers that exceed this critical thickness insulate the underlying ice from solar radiation and atmospheric warming to reduce sub-debris melt (Østrem, 1959; Reznichenko et al., 2010). The debris layers on glacier tongues in the Himalaya exhibit highly

undulating topography punctuated by ice cliffs and supraglacial ponds (Figure 1) that further contribute to spatially variable and non-linear ablation regimes (Benn et al., 2012).

Recent work has quantified the contribution of differential ablation to debris-covered glacier mass loss (e.g. Brun et al., 2016; Buri et al., 2016; Fyffe et al., 2020; Miles et al., 2016, 2018; Thompson et al., 2016; Watson et al., 2017). However, the processes that form hummocky topography and control differential ablation are not yet fully understood (Westoby et al., 2020). At the glacier scale, a feedback exists whereby ablation promotes exhumation of englacial debris towards the terminus and the formation of medial and transverse moraines (Anderson, 2000), resulting in reduced melt towards the terminus, enhanced ablation up-glacier and declining ice flow down-glacier (Anderson & Anderson, 2018; Nicholson & Benn, 2006; Rowan et al., 2015). The resulting low-angle or inverted mass balance gradient causes debris-covered glaciers to lose mass by surface lowering rather than terminus recession (Benn & Lehmkuhl, 2000; Hambrey et al., 2008; Quincey et al., 2009). Thick debris cover at the terminus and decreasing ice flow in the lower ablation area of such glaciers encourages toward-surface migration of englacial debris-rich septa and subsequently debris emergence, leading to thickening of supraglacial debris layers (Kirkbride & Deline, 2013). Steep-sided lateral moraines and thick terminal moraines inhibit the removal of debris

from the glacier surface, causing the zone of debris emergence to expand up-glacier (Anderson & Anderson, 2016).

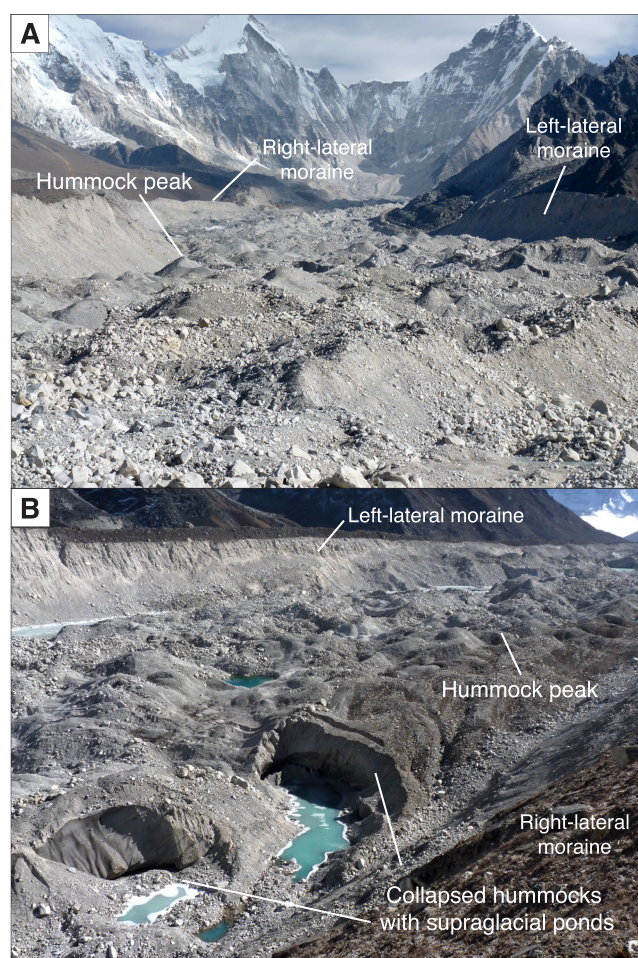
Supraglacial debris thickness in the Everest region can vary by several metres within horizontal distances of a few decimetres (Nicholson & Mertes, 2017). Differential ablation resulting from these variations in debris thickness causes non-uniform surface lowering, topographic inversion (Iwata et al., 2000) and modifies the supraglacial landscape, manifesting as a transient hummocky topography (Benn et al., 2012; Juen et al., 2014). Depressions in this topography enable the collection of meltwater and development of supraglacial ponds (Qiao et al., 2015; Thakuri et al., 2016), which enhance ablation by an order of magnitude compared to surrounding areas of debris-covered ice (Miles et al., 2018). Topographic highs may become drastically reworked where sufficiently steep slopes develop so that debris is avalanched off to expose bare ice (Buri et al., 2016), and the ice cliffs thus produced typically melt six times faster than the mean ablation rate for the debris-covered area (Brun et al., 2018; Reid & Brock, 2014). Lateral thermal erosion at supraglacial ponds may also form ice cliffs by steepening surrounding slopes and promoting the removal of debris (Röhl, 2008). The volume of ice contained within individual hummocks, as well as their three-dimensional geometry, limits the amount of ice-cliff backwasting (Brun et al., 2016; Miles et al., 2016). These observations demonstrate that differential ablation is itself influenced by hummock formation and the subsequent gravitational redistribution of debris across local slopes (Miles et al., 2016; Moore, 2017; Tonkin et al., 2016; Westoby et al., 2020). Thus, generally, hummocks may be regarded as the outcome of complex spatial dynamics operating at short, sub-glacier length scales that arise from feedbacks between ablation, topographic evolution, sediment transport and supraglacial hydrology.

Whilst concepts regarding the establishment of debris cover and its subsequent evolution are reported in the literature (e.g. Anderson, 2000; Anderson & Anderson, 2018; Iwata et al., 2000; Kirkbride & Deline, 2013), the genesis of hummocky topography has received limited study (e.g. Mölg et al., 2020; Thompson et al., 2016; Westoby et al., 2020), and how this topography is governed by the spatial dynamics outlined above and by glaciological factors is far from well understood (King et al., 2020). Classification of landforms through a full assessment of their morphometry can yield valuable information about their formation (Smith, 2014). Here, we take this approach to derive insights into the origin and evolution of hummocky topography on debris-covered glaciers. Focusing on a sample of five debris-covered glaciers in the Everest region, we undertook extensive statistical characterization of the topography of their debris-covered sections and developed a first-order classification of hummocks as a supraglacial landform. We used these results to discuss the physical factors and processes that determine the range of observed hummock forms, the glacier-scale controls on their morphometry and the conditions for their formation and evolution.

## 2 | METHODS

### 2.1 | Study area

Glaciers in the Everest region exhibit extensive hummocks across their debris-covered surfaces. We sampled the topography of five



**FIGURE 1** The debris-covered surface of Khumbu Glacier showing typical hummocky topography looking (A) along (up) glacier and (B) across glacier. The width of the glacier tongue between the lateral moraines is about 750 m [Colour figure can be viewed at [wileyonlinelibrary.com](http://wileyonlinelibrary.com)]



glaciers in the Everest region—Khumbu, Ngozumpa, Rongbuk, Gezhongkang and Jiuda Glaciers (Figure 2a). Supraglacial ponds and ice cliffs are widespread across the debris-covered portions of all five glaciers (Watson et al., 2016). Although their proximity to each other suggests that these glaciers experience similar synoptic climatic forcing, they do vary in elevation, aspect and size (Table 1). This diversity of form presents an opportunity to characterize glacier-scale influences on hummock formation and evolution.

## 2.2 | Topographic data

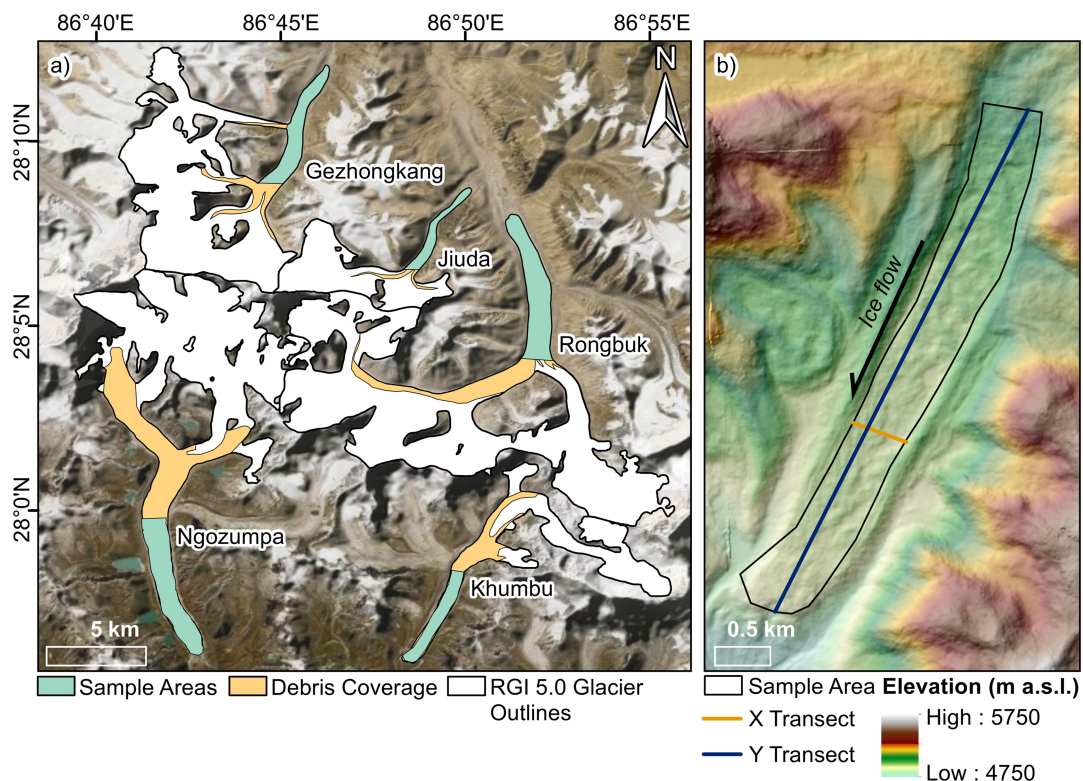
SETSM digital elevation models (DEMs) were sourced from the Polar Geospatial Centre, University of Minnesota, at 8-m grid resolution (Noh & Howat, 2015). These DEMs were assessed for geo-location errors and biases following the three-step approach of Nuth and Kääb (2011), and were co-registered to the 30-m Shuttle Radar Topography Mission (SRTM) DEM. Over stable (i.e. non-glacierized) terrain, the mean difference in the vertical direction between the SETSM and SRTM DEMs was  $-0.416$  m with a standard deviation of  $10.12$  m. Following co-registration, the SETSM tiles covering the study area were mosaicked to create a single, region-wide DEM for analyses. Our measurements of hummock geometries are therefore subject to  $3.8$  m horizontal and  $2.0$  m vertical uncertainties resulting from the accuracy of the Worldview scenes that remain after correction of the SETSM DEM (Shean et al., 2016). The SETSM data were gathered in 2014 (Noh & Howat, 2015), so the topography sampled in our study represents the 2014 surface elevations of the five glaciers.

## 2.3 | Characterization of hummock morphology

### 2.3.1 | Automated linear transect sampling

Topographic data were extracted from the DEM for the debris-covered tongue of each glacier (Figure 2a) in linear transects sampled at  $40$  m intervals in both the X (across-glacier) and Y (along-glacier) directions relative to the predominant orientation of the central flow line (Figure 2b). The horizontal point interval on each transect was  $8$  m. Bilinear interpolation was used to estimate elevation where transects did not intersect DEM grid points. The distance between transects was chosen to be small enough to ensure dense sampling of the hummock morphometry necessary for their statistical characterization but large enough to limit redundancy in the detection of peaks and troughs. The Y profiles were linearly detrended to remove the prevailing slope of the glacier tongue as required for our topographic roughness analysis.

Successive peaks and troughs on each transect were identified using the 'findpeaks' function in MATLAB® R2015b. The minimum distance for peak detection was set to  $32$  m (i.e. four times the horizontal point distance), because initial tests showed that peak detection was heavily influenced by low-amplitude ( $<1$  m) fluctuations in surface elevation between adjacent points. Hummock peak spacing (peak-to-peak distance), length (trough-to-trough distance), amplitude and mean flank slope were calculated for all X transects and Y profiles (see Figure 3a for the definitions of these variables). Any uncertainty associated with our measurements arises only from relative uncertainties due to the internal consistency of the DEM, which is considered to be negligible (e.g. Quincey et al., 2007). However, the  $8$ -m



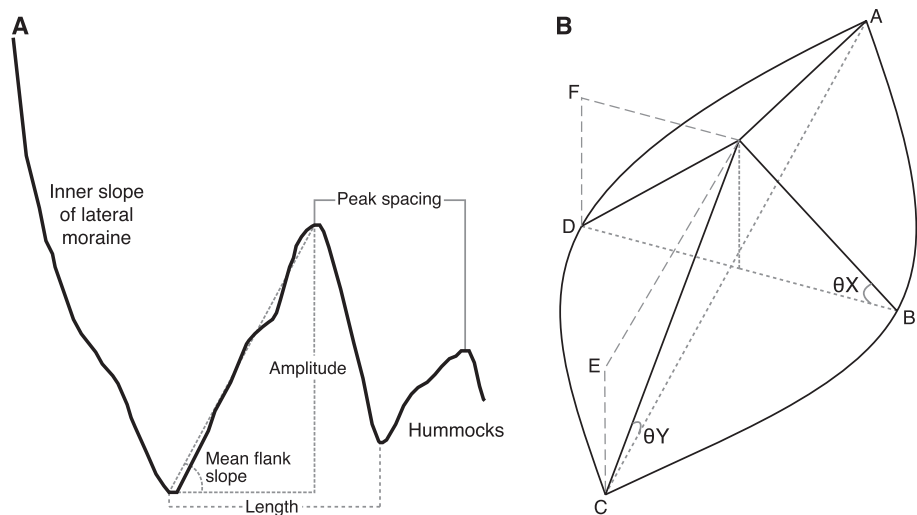
**FIGURE 2** Location of study area in the Everest region of the Himalaya. (a) Topographic data were extracted for analysis from areas highlighted in green. (b) Surface elevation data for the debris-covered tongue of Khumbu Glacier showing examples of an X transect and a Y profile in our sampling scheme. Glacier names and outlines were obtained from the Randolph Glacier Inventory version 5.0 (Pfeffer et al., 2014). Topographic imagery is from ESRI World Imagery Basemap [Colour figure can be viewed at [wileyonlinelibrary.com](http://wileyonlinelibrary.com)]

**TABLE 1** Morphology of the five sampled glaciers from the Randolph Glacier Inventory version 5.0 (Pfeffer et al., 2014)

Glacier name	Area (km <sup>2</sup> )	Elevation range (m a.s.l.)	Aspect (°)	Debris-covered area (km <sup>2</sup> )	Slope of the sampled area (°)
Khumbu	19.1	4926–7870	262	6.3	1.1
Ngozumpa	61.1	4702–8181	180	18.3	1.4
Rongbuk	73.2	5155–7947	013	11.8	1.9
Gezhongkang	47.1	5328–7927	037	6.6	3.7
Jiuda	15.9	5405–7899	049	2.2	4.1

**FIGURE 3** Schematic of hummock sampling and classification. (A) Part of an X transect from Khumbu Glacier illustrating how hummock characteristics were defined and measured.

(B) Schematic of the morphometry of a typical hummock. Dotted lines show measurement axes; A–C is the hummock length in Y, and B–D the length in X. E is the hummock amplitude in Y, and F the amplitude in X.  $\theta_X$  and  $\theta_Y$  represent the mean flank slopes in the respective directions. Along the curves C–B–A and C–D–A, surface elevation dips down to B and D before rising up again to A



resolution of the DEM means that the true elevations of hummock peaks and troughs may not always be recorded, and so amplitude is considered a minimum estimate of hummock relief and peak spacing incorporates an inherent uncertainty.

### 2.3.2 | Statistical measures of hummocky topography

To classify hummocks as a landform, we examined their morphometry by compiling probability distributions of hummock peak spacing, length, amplitude and mean flank slope, and interpreting these distributions and the associated descriptive statistics. The results were used to conceptualize a typical hummock and inform the assessment of glacier-scale controls on the hummock expression. For each hummock shape variable, probability density functions (PDFs) were computed for each glacier as well as for the entire population of hummocks. Peak spacing, length, amplitude and flank slope measurements were analysed in both the X and Y directions. Skewness and kurtosis were calculated for every distribution as these statistics can inform interpretations of the conditions and controls of hummock formation (Chandler et al., 2016). Unequal variance *t*-tests were conducted to highlight statistically significant differences in morphometric characteristics along-glacier and across-glacier. Any directional biases identified were evaluated against anisotropy detected independently from surface roughness calculations.

### 2.3.3 | Surface roughness calculations

To complement the statistical characterization, which treats individual hummocks as countable, a surface roughness method was employed

to analyse the continuous topography of each sampled area with no *a priori* assumptions of what constitutes a recognizable landform (Gadelmawla et al., 2002). This approach quantifies the landscape so that information on processes can be inferred over a length-scale continuum. We used it to identify the horizontal scale at which natural background roughness ‘transitioned’ to the topography of interest (Smith, 2014), in this case, the hummocky topography. Specifically, scaling behaviour is quantifiable by the Hurst exponent, *H*, in the equation

$$v = v_0 \Delta^H \quad (1)$$

where *v* is the root mean square deviation (RMSD) of detrended surface elevation measured at the horizontal scale or ‘lag step’,  $\Delta$ , and  $v_0$  is the RMSD at the unit scale (Shepard et al., 2001; Smith, 2014). The *v* and  $\Delta$  data compiled for a transect constitute its variogram, and *H* can be found by fitting the log–log plot, or ‘deviogram’, of RMSD against  $\Delta$ . For many real topographic surfaces, the observation that roughness or relief increases more slowly than the horizontal scale leads to  $0 \leq H \leq 1$  (Shepard et al., 2001; Smith, 2014).  $H \approx 1$  would indicate a self-similar topography where similar patterns of elevation changes are repeated on different scales. Natural background roughness tends to exhibit high *H* values approaching 1, and this behaviour typically occupies the left-hand end of deviograms (at small  $\Delta$  and amplitudes). With increasing  $\Delta$ , there is often a break or transition in the deviogram to a new scaling behaviour with a lower *H* value, or to other complex behaviour. The breakpoint in  $\Delta$ , *b*, can be interpreted as the scale at which large-scale processes conspire to generate topographic elements. For more extensive treatment of this subject beyond our introduction here, we refer the reader to the reviews by Main et al. (1999), Shepard et al. (2001) and Smith (2014), and to the examples of applications by Vázquez et al. (2005), Moser et al. (2007)



and Rosenberg et al. (2011). Our perception of hummocks as non-scale-invariant (thus non-self-similar) forms suggests that their topographic scaling is characterized by low  $H$  values. The range of  $\Delta$  over which such scaling is found would identify their scale of occurring as distinct landforms. We expect the corresponding  $b$  (at the lower end of this range) to distinguish hummocks from background roughness that arise from short-scale supraglacial processes not intrinsic to hummock formation.

Two devioigrams were computed for each glacier, one for X transects and one for Y profiles. Each devioigram was examined visually for the presence of a transition and  $b$ . Then, more precisely, sequential Bayesian change point detection was conducted to determine  $b$  by pinpointing where  $H$  changes significantly, using the algorithm of Ruggieri and Antonellis (2016). We recorded  $H$  for the data left of  $b$  as  $H1$ , and  $H$  between  $b$  and the maximum RMSD as  $H2$ . As indicated above,  $H1$  is associated with background roughness and  $H2$  with hummocky topography. Our determination of  $H$  from each devioigram has a conservative uncertainty of  $\pm 0.05$ . The confidence level for breakpoints identified by the change point detection algorithm varied from 0.75 to 0.99 for all transects, so our results of  $b$  have a conservative uncertainty of  $\pm 25\%$ . To facilitate comparisons between glaciers, RMSD measurements were also examined at three values of  $\Delta$ : 8 and 80 m, and 'Max( $\Delta$ )', that is, the  $\Delta$  value where maximum RMSD occurs. Directional (X and Y) influences on  $H2$  and  $b$  were assessed to discern any possible anisotropy of the hummocky topography. The Y profiles were divided into segments of the same length as the mean X transects in these directional comparisons. Unequal variance  $t$ -tests were conducted on the  $H2$  values using a nominal difference of 10% (Shepard et al., 2001) to determine if their mean values differed significantly in the two directions.

### 3 | RESULTS

#### 3.1 | Statistical characterization of hummock morphometry

In total, we recorded 1528 hummock lengths and 1116 hummock peak spacings in X, and 1088 lengths and 1067 peak spacings in Y

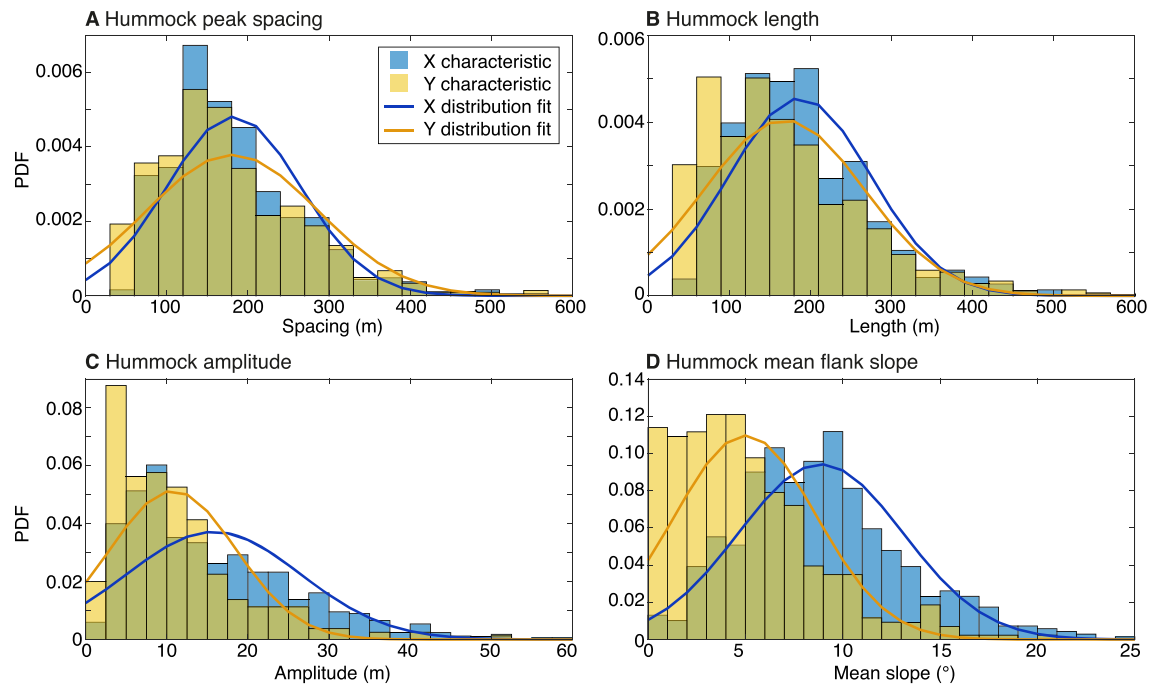
across the five glaciers. Hummock lengths are more numerous than hummock peak spacings because some transects are so short that they sample just a single hummock, yielding a measurement of length but not spacing. The minimum, median and maximum hummock length, amplitude and flank slope measurements (Table 2) provide a first indication of a systematic difference in hummock morphometry between the two directions (recall that X and Y are defined with respect to each glacier's flow direction, while the aspects of the glaciers differ substantially). These results suggest that hummocks tend to be elongated along the glacier flow line, with a mild exception being Khumbu Glacier, and more subdued in amplitude along-glacier than across-glacier (Table 2). Consistent with these findings, hummock flanks are steeper in X than in Y. We affirm these tendencies by examining the PDFs of each morphometric variable in X and Y (Figure 4) and their associated statistics (Table 3) and make comparisons between glaciers as well as considering the data as a whole.

All eight PDFs of hummock peak spacing, length, amplitude and flank slope are peaked and unimodal, with relatively smooth tails of decay at high values of the morphometric variable and reduced abundances at low values (Figure 4). The PDFs of hummock peak spacing, length and amplitude appear similar to log-normal, with rapid declines at small sizes that indicate a scarcity of small or short hummocks (Figures 4a–c). Although our minimum peak/trough detection distance implies zero count for the first bins in peak spacing and length, the declines for these variables are real (not due to undersampling) as they are resolved by the next several bins. In order-of-magnitude terms, hummocks are generally about 200 m long and wide and 10–20 m high (Figures 4a–c), such that flank slopes of 5–10° are common (Figure 4d). The tails of the respective PDFs indicate extreme values about twice as large. Hummock morphometry for all glaciers exhibits directional anisotropy in planform and in the vertical dimension. This is evidenced by the mismatch in shape between the X and Y PDFs for each hummock characteristic, apart from peak spacing where the median values are similar in each direction (Figure 4). Mean peak spacing and length are greater in Y than in X, whereas the reverse tendency is found for mean hummock amplitude and flank slope (Table 3), in agreement with our preliminary interpretations (Table 2).

In considering the planform geometries of our population of hummocks, the mean peak spacing and mean length of all hummocks are

**TABLE 2** Statistics of hummock morphometry for each glacier. Columns list minimum, median and maximum values of hummock length, amplitude and mean flank slope

Glacier		Length (m)			Amplitude (m)			Mean flank slope (°)		
		Min	Med	Max	Min	Med	Max	Min	Med	Max
Khumbu	X	56	192	392	1.7	9.3	28.6	1.9	6.2	15.8
	Y	48	184	440	1.7	9.0	20.7	0.3	3.5	10.4
Ngozumpa	X	48	184	568	1.2	17.0	65.3	1.0	9.3	19.4
	Y	56	192	768	3.6	14.9	51.0	0.4	5.7	20.5
Rongbuk	X	56	184	704	0.2	12.7	51.8	0.2	6.5	17.6
	Y	64	212	1,048	3.0	11.3	36.0	0.1	4.8	10.9
Gezhongkang	X	56	168	464	1.4	11.6	42.7	1.1	8.4	24.6
	Y	48	176	512	0.2	10.0	30.6	0.1	4.8	18.5
Jiuda	X	40	144	296	0.5	18.1	39.7	0.4	10.7	17.9
	Y	80	416	192	3.6	11.0	22.4	1.2	5.8	13.5



**FIGURE 4** Probability density distributions of hummock morphometric variables derived for all X transects and all Y profiles. (A) Peak spacing, (B) length, (C) amplitude and (D) mean flank slope. In each panel, different colours distinguish the measurement directions, and idealized curves are fitted to the PDFs to highlight differences. Green shading indicates areas of overlap between the blue (X) and yellow (Y) histograms. Bin sizes are 30 m in (A) and (B), 2.5 m in (C) and 1° in (D) [Colour figure can be viewed at [wileyonlinelibrary.com](http://wileyonlinelibrary.com)]

significantly smaller in X than in Y. For individual glaciers, directional differences in mean peak spacing (which are all statistically significant) are 23–43 m and directional differences in mean length of 15–38 m (all statistically significant apart from Khumbu Glacier). The PDFs are more positively skewed in Y than in X for both peak spacing and length for all glaciers, except Gezhongkang Glacier where the values are similar in each direction (Table 3). These results demonstrate that hummocks tend to be elongated in the direction of ice flow, although individual hummocks may not be so. The mean hummock elongation ratio (calculated for each hummock as length in Y divided by length in X) is 1.1 on Khumbu, Ngozumpa and Gezhongkang Glaciers, and 1.2 on Rongbuk and Jiuda Glaciers. Turning to view the population of hummocks in the vertical dimension, their mean amplitude is greater by about 3 m in X than in Y (Figure 4; Table 3). This directional excess in mean amplitude varies between glaciers from 1.4 to 5.9 m and is only significant for Jiuda Glacier. More strikingly, mean hummock flank slopes are significantly greater in X than in Y on every glacier by several degrees (Table 3). The greatest mean slope in X is found on Jiuda Glacier, and the greatest mean slope in Y is found on Ngozumpa Glacier.

Several relationships between glacier attributes (Table 1) and hummock morphometry (Table 2) are noteworthy, despite the variability between glaciers and their differing levels of anisotropy reported above. Mean peak spacing and length in both axes increase with glacier size; broadly in the order from smallest to largest glacier of Jiuda, Khumbu and Gezhongkang, Ngozumpa and Rongbuk Glaciers (Table 3). For each glacier, we discovered positive correlations in X of mean peak spacing ( $r^2 = 0.97$ ) and mean length ( $r^2 = 0.60$ ) with glacier width. Correlations in Y with glacier width, which increases with glacier length, are strongly positive with mean peak spacing ( $r^2 = 0.88$ ) and mean length ( $r^2 = 0.95$ ). The mean amplitude in Y also correlates

positively with glacier width ( $r^2 = 0.67$ ), although in X the correlation is much weaker ( $r^2 = 0.10$ ), apart from for Jiuda Glacier. Correlation between mean flank slope and the slope of the sampled area (Table 1) was found to be weakly positive in X ( $r^2 = 0.42$ ) and Y ( $r^2 = 0.08$ ). Skewness and kurtosis of the frequency distribution of slopes varies across glaciers more so than the other morphometric characteristics (Table 3), hence it is difficult to observe a particular trend.

From the results presented above, we identify a typical hummock morphology. Although the hummocks sampled are not regular in shape or size, nor always symmetrical or co-aligned in orientation, the idealized form in Figure 3b summarizes key aspects of their shape: (1) their elongation along-glacier; (2) their higher amplitude across-glacier than along-glacier; and (3) their consequently steeper flanks across-glacier than along-glacier. Property (2) means that troughs on either side of hummocks commonly reach lower elevations than troughs at their up- and down-glacier ends. These statistical mean properties have been established by our transect measurements rather than through an attempt to characterize the three-dimensional geometry of each hummock, which would be time-consuming and it is unclear how to define the boundaries between hummocks in such an exercise.

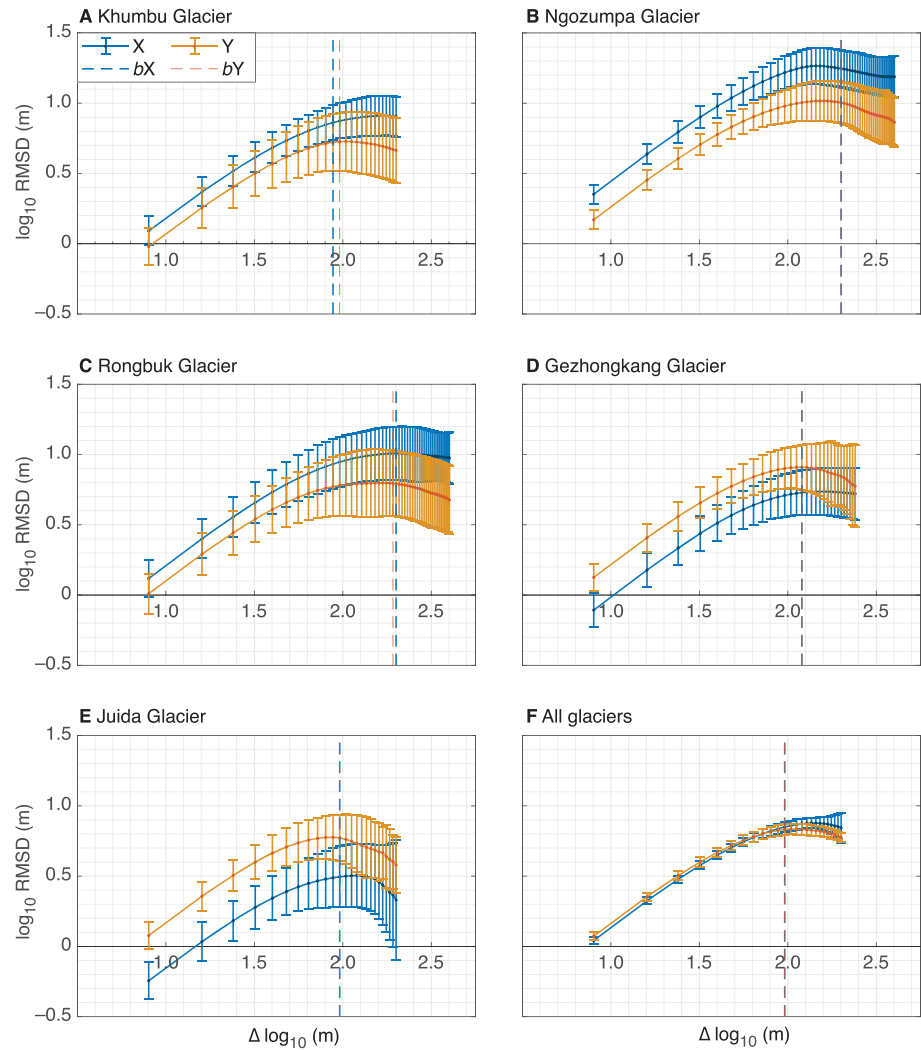
### 3.2 | Topographic roughness

RMSD measured from the transects and the associated roughness analyses support our idea of a typical hummock shape and finding of directional anisotropy. The devigrams (Figure 5) show similar functional forms, with  $\log(\text{RMSD})$  rising linearly with  $\log \Delta$  at small lag, to reach a rounded peak at large lag and then decreasing. Surface roughness in X is greatest on Ngozumpa and Rongbuk Glaciers, followed by

Glacier													
Morphometric characteristic	Khumbu		Ngozumpa		Rongbuk		Gezhongkang		Jiuda		All observations		
	X	Y	X	Y	X	Y	X	Y	X	Y	X	Y	
Peak spacing (m)	$\mu$	162 ± 62	196 ± 82	182 ± 83	225 ± 115	198 ± 88	230 ± 158	176 ± 70	199 ± 87	149 ± 62	189 ± 88	183 ± 80	215 ± 117
	$\gamma$	0.815	0.856	1.02	2.29	0.718	2.99	0.998	0.929	1.08	1.18	0.96	2.75
	$\kappa$	3.06	3.28	4.19	13.2	3.24	15.3	4.35	3.93	3.63	1.18	3.97	17.46
	n	91	164	366	426	347	229	276	200	36	48	1116	1,067
	p	2.8 × 10 <sup>-4*</sup>		3.6 × 10 <sup>-9*</sup>		5.2 × 10 <sup>-3*</sup>		2.0 × 10 <sup>-3*</sup>		1.9 × 10 <sup>-2*</sup>		1.5 × 10 <sup>-17*</sup>	
Length (m)	$\mu$	188 ± 69	203 ± 85	194 ± 86	218 ± 108	211 ± 106	236 ± 143	177 ± 71	196 ± 88	156 ± 67	194 ± 73	192 ± 88	214 ± 109
	$\gamma$	0.331	0.554	0.874	1.45	0.986	2.77	0.888	0.797	0.301	0.853	1.06	2.13
	$\kappa$	2.65	2.45	3.86	6.08	3.79	14.4	3.80	3.67	1.90	3.70	4.51	12.63
	n	135	165	412	439	470	224	409	212	102	48	1528	1088
	p	9.1 × 10 <sup>-2</sup>		4.0 × 10 <sup>-4*</sup>		2.3 × 10 <sup>-2*</sup>		6.6 × 10 <sup>-3*</sup>		3.2 × 10 <sup>-3*</sup>		3.5 × 10 <sup>-8*</sup>	
Amplitude (m)	$\mu$	11.0 ± 6.38	9.33 ± 4.78	19.1 ± 12.9	17.4 ± 10.4	14.7 ± 11.4	13.3 ± 8.52	13.6 ± 8.74	11.3 ± 7.76	16.8 ± 8.84	10.9 ± 4.94	15.4 ± 10.9	12.6 ± 8.30
	$\gamma$	0.564	0.334	0.921	1.21	1.04	0.844	1.04	0.636	0.0919	0.439	1.15	1.40
	$\kappa$	2.44	2.53	3.62	4.12	3.77	3.13	3.65	2.38	2.39	2.40	4.50	5.81
	n	88	40	201	51	139	27	185	47	53	39	666	204
	p	0.12		0.36		0.45		8.8 × 10 <sup>-2</sup>		1.4 × 10 <sup>-4*</sup>		1.6 × 10 <sup>-4*</sup>	
Mean flank slope (°)	$\mu$	6.48 ± 3.06	3.96 ± 2.77	9.71 ± 3.79	6.94 ± 5.27	7.27 ± 4.04	4.86 ± 2.45	9.21 ± 4.85	5.51 ± 3.95	10.13 ± 3.56	6.24 ± 3.25	8.67 ± 4.26	5.61 ± 4.00
	$\gamma$	0.616	0.663	0.314	0.677	0.429	0.683	0.867	1.16	-0.412	0.547	0.57	1.09
	$\kappa$	2.77	2.42	2.66	2.54	2.86	2.76	3.28	4.36	3.09	2.49	3.19	4.10
	n	88	40	201	51	139	27	185	47	53	39	666	204
	p	1.7 × 10 <sup>-5*</sup>		8.9 × 10 <sup>-4*</sup>		1.4 × 10 <sup>-4*</sup>		5.9 × 10 <sup>-7*</sup>		6.5 × 10 <sup>-7*</sup>		9.1 × 10 <sup>-19*</sup>	



**FIGURE 5** Devioigrams of RMSD against lag step for each glacier and the mean for all glaciers. Breakpoints  $b$  are indicated by the dashed vertical lines are located where the rising trend of the data deviates significantly from being linear [Colour figure can be viewed at [wileyonlinelibrary.com](http://wileyonlinelibrary.com)]



**TABLE 4** Results from the surface roughness assessment:  $b$  is the scale where the breakpoint occurs on a devioigram;  $p$ -values are reported for unequal variance  $t$ -tests of the difference between  $H2$  found for  $X$  transects and  $H2$  found for  $Y$  profiles. Statistically significant  $p$ -values are marked with an asterisk;  $n_x$  and  $n_y$  denote the number of observations for  $H2$  in  $X$  and  $Y$

Glacier		Mean RMSD (m) at three values of $\Delta$			$H1$	$H2$	$b$ (m)	$p$
		8 m	80 m	$\text{Max}(\Delta)$				
Khumbu	X	$1.3 \pm 0.3$	$7.3 \pm 1.8$	$9.1 \pm 2.4$ ( $160 \pm 40$ )	$0.74 \pm 0.07$	$0.27 \pm 0.20$	88	$2.8 \times 10^{-4*}$ ( $n_x = 122, n_y = 97$ )
	Y	$1.0 \pm 0.3$	$5.7 \pm 2.4$	$6.4 \pm 2.8$ ( $128 \pm 56$ )	$0.69 \pm 0.10$	$0.28 \pm 0.23$	96	
Ngozumpa	X	$2.3 \pm 0.3$	$15.5 \pm 3.5$	$20.4 \pm 5.2$ ( $192 \pm 88$ )	$0.61 \pm 0.09$	$0.30 \pm 0.26$	200	$2.3 \times 10^{-8*}$ ( $n_x = 160, n_y = 81$ )
	Y	$1.5 \pm 0.2$	$9.2 \pm 2.3$	$11.6 \pm 3.7$ ( $176 \pm 64$ )	$0.55 \pm 0.12$	$0.41 \pm 0.25$	200	
Rongbuk	X	$1.4 \pm 0.4$	$8.8 \pm 3.1$	$11.7 \pm 4.0$ ( $248 \pm 88$ )	$0.59 \pm 0.09$	$0.26 \pm 0.20$	200	$1.6 \times 10^{-11*}$ ( $n_x = 170, n_y = 114$ )
	Y	$1.1 \pm 0.3$	$6.3 \pm 3.0$	$7.8 \pm 4.1$ ( $168 \pm 72$ )	$0.51 \pm 0.15$	$0.33 \pm 0.25$	192	
Gezhongkang	X	$0.8 \pm 0.2$	$5.1 \pm 1.9$	$6.4 \pm 2.4$ ( $176 \pm 56$ )	$0.70 \pm 0.09$	$0.26 \pm 0.2$	120	$1.3 \times 10^{-3*}$ ( $n_x = 194, n_y = 95$ )
	Y	$1.4 \pm 0.3$	$7.8 \pm 2.5$	$9.1 \pm 3.3$ ( $144 \pm 48$ )	$0.65 \pm 0.12$	$0.25 \pm 0.24$	120	
Jiuda	X	$0.6 \pm 0.2$	$3.3 \pm 1.4$	$3.9 \pm 1.9$ ( $120 \pm 40$ )	$0.71 \pm 0.12$	$0.29 \pm 0.21$	96	$4.3 \times 10^{-5*}$ ( $n_x = 127, n_y = 35$ )
	Y	$1.2 \pm 0.3$	$6.3 \pm 2.1$	$6.8 \pm 2.3$ ( $96 \pm 24$ )	$0.64 \pm 0.10$	$0.44 \pm 0.30$	96	
All	X	$1.1 \pm 1.6$	$6.6 \pm 1.7$	$7.6 \pm 1.8$ ( $144 \pm 64$ )	$0.66 \pm 0.12$	$0.27 \pm 0.21$	96	$2.0 \times 10^{-4*}$ ( $n_x = 773, n_y = 442$ )
	Y	$1.2 \pm 1.8$	$6.5 \pm 1.2$	$6.8 \pm 1.3$ ( $112 \pm 64$ )	$0.60 \pm 0.14$	$0.32 \pm 0.26$	96	

Khumbu, then Gezhongkang and Jiuda Glaciers (Figure 5; Table 4). In  $Y$ , Ngozumpa Glacier has the greatest roughness of all glaciers, followed by Gezhongkang and Rongbuk, then Khumbu and Jiuda Glaciers. These sequences suggest that the larger debris-covered areas, which are found on the larger glaciers, have greater topographic

roughness than the smaller debris-covered areas found on the smaller glaciers. This result is in agreement with the observation that topographic roughness increases with the 'stage of development' of the debris layer, which is greatest for larger glaciers where supraglacial debris layers are more mature (Herreid & Pellicciotti, 2020).

Directional anisotropy in surface roughness is indicated by marked differences between along-glacier roughness and across-glacier roughness (Figure 5). The signs of these differences vary between glaciers. Roughness in X exceeds roughness in Y on Ngozumpa, Rongbuk and Khumbu Glaciers, whereas the reverse is true on Gezhongkang and Jiuda Glaciers. For all glaciers, mean  $Max(\Delta)$  in X exceeds mean  $Max(\Delta)$  in Y by 37 m (Figure 5f). Since we find strong positive correlations between  $Max(\Delta)$  and mean peak spacing in both X ( $r^2 = 0.84$ ) and Y ( $r^2 = 0.89$ ), this excess can be interpreted as a directional anisotropy in peak spacing.

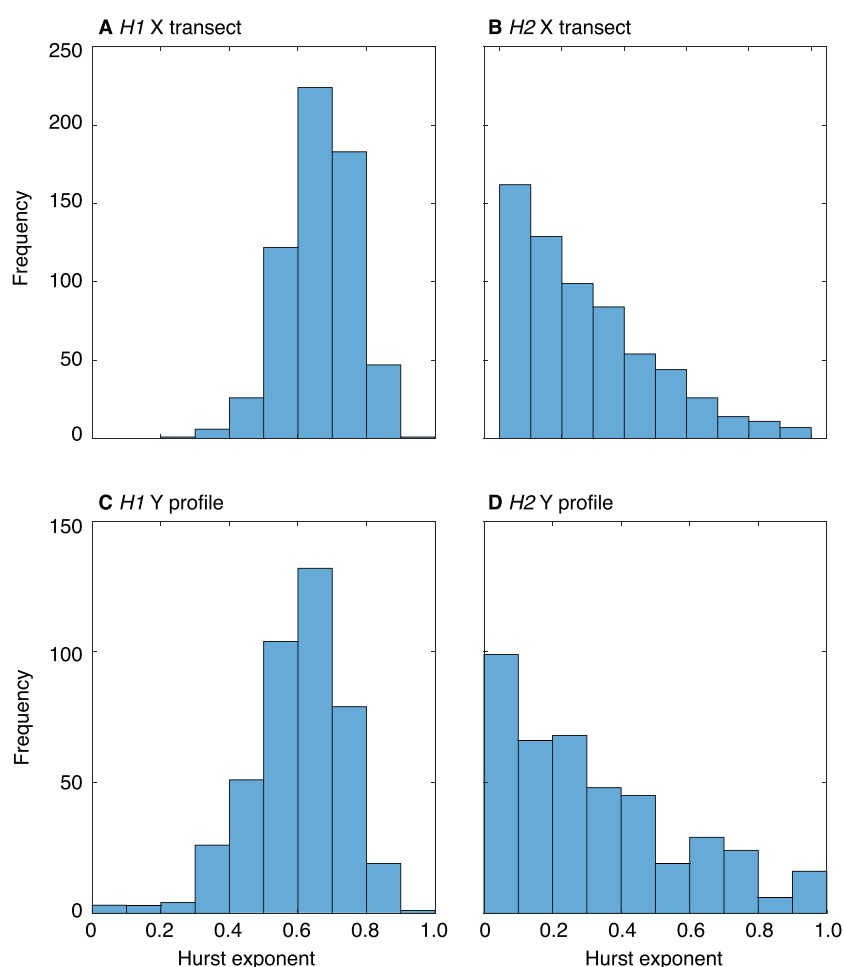
The devigrams of the five glaciers (Figures 5a–e) show similar scaling behaviour, with values of  $H1$  clustered around 0.7 and in the range 0.51–0.74 and values of  $H2$  clustered around 0.3 and in the range 0.26–0.44 (Table 4). The low  $H2$  values indicate that hummocks are non-scale-invariant (non-self-similar) across all five glaciers, and that their scaling behaviour differs from that identified for background roughness by a higher  $H1$  value. Histograms of  $H$  derived for the collection of X transects and Y profiles affirm these tendencies (Figure 6). The breakpoint ( $b$ ) between  $H1$  and  $H2$  scaling computed by the detection algorithm occurs consistently at  $\Delta$  of  $10^2$  m (Table 4; Figure 5), indicating that this is the scale at which hummocks can be distinguished from background roughness. We discover distinct directional influences on both  $H1$  and  $H2$ .  $H1$  is consistently larger across-glacier than along-glacier, whereas the opposite is found for  $H2$  for all glaciers except Gezhongkang Glacier, where  $H2$  values in X and Y are similar (Table 4). The directional differences in  $H2$ , which are statistically

significant, indicate an anisotropy in surface roughness of the hummock topography that is consistent across the glaciers.

## 4 | DISCUSSION

### 4.1 | Comparison of hummock geometry with background roughness

Our finding of a consistent scaling behaviour of roughness across the five glaciers, reflected by their similar  $H2$  values, strongly suggests that the same set of processes operate on them—and perhaps on all debris-covered glaciers—to create hummocky topography. Our  $H1$  results also suggest that other self-consistent processes produce smaller-scale roughness elements across all five glaciers. Whilst variability in the location of  $b$  was large and relied heavily on the length of the profiles entered in the Bayesian algorithm (Ruggieri & Antonellis, 2016), they delineated a change in process between surface roughness generation and the generation of hummock-scale topography at the lower end of the scale of hummock peak spacing and length (Table 2; Figure 5). Typically, the transition between natural background roughness and hummocky topography occurred at a horizontal scale of 55–90 m. Therefore, the genesis and evolution of glacier-scale hummocky topography, represented by  $H2$  scaling behaviour, may be influenced by variations in ice flow and the distribution and concentration of englacial debris, which will vary between glaciers with different dynamic and erosional histories (Kirkbride & Deline,



**FIGURE 6** Histograms of Hurst exponents found from linear transects of hummock topography: (A)  $H1$  for all X transects; (B)  $H2$  for all X transects; (C)  $H1$  for all Y profiles; and (D)  $H2$  for all Y profiles [Colour figure can be viewed at [wileyonlinelibrary.com](http://wileyonlinelibrary.com)]

2013), although other factors may also be important and are discussed in the following sections. Conversely, we expect that smaller-scale roughness, indicated by  $H1$  scaling behaviour, is likely to be dictated by the local rearrangement of debris between perturbations in glacier surface topography on a scale of less than about  $10^2$  m, resulting from processes such as local slope failures, erosion by supraglacial streams, relict and potentially reactivated large crevasses, deformation of stagnant ice, and movement of particularly large clasts within the debris layer (cf. Westoby et al., 2020).

## 4.2 | Glacier-scale controls on hummock morphology

Across the five study glaciers, larger hummocks generally occurred on larger glaciers. This observation is based on the strong positive correlation between hummock peak spacing and length and glacier widths and lengths, which is interpreted as the result of the volume of ice and englacial debris available to form large-scale surface undulations, and the longer ice-flow histories of larger glaciers that allow more time for larger landforms to develop (Herreid & Pellicciotti, 2020; Mölg et al., 2020). The devioigrams computed for the glaciers reinforce this assessment, as both the measured maximum RMSD and the lag distance at which it occurs (Table 4) increase with glacier size. Positive skewness in all of our morphometric data indicates a higher probability of the occurrence of smaller hummocks, although hummocks of greater length and peak spacing may form on larger glaciers. Hummocks were largest on Ngozumpa Glacier, which is one of the largest glaciers in the region and has the lowest elevation in our study (Table 1). Glaciers at relatively low elevations will be subject to warmer mean annual air temperatures and so are likely to experience greater ablation (Oerlemans, 1989) and thus greater rates of debris rearrangement, recorded by higher-relief hummocks, than those at higher elevations.

Hummock amplitude is also likely to be influenced by supraglacial and englacial hydrology. The skewness of across-glacier (in X) amplitudes on Gezhongkang, Rongbuk and Ngozumpa Glaciers was greater than for the other glaciers, exceeding 0.9 in each case and reflecting a greater probability of small hummocks. Jiuda Glacier has a greater probability of larger hummocks, indicated by the skewness of amplitudes in X of 0.09, and Khumbu Glacier is in the middle of the range, with skewness of amplitudes in X of 0.6. Gezhongkang Glacier is observed to have fewer supraglacial ponds than the other study glaciers. For comparison, nearby Jiuda Glacier occupies the same elevation range as Gezhongkang Glacier but exhibits a larger number of supraglacial ponds. The area of the debris-covered tongue occupied by supraglacial ponds is 2.0% for Ngozumpa and Rongbuk Glaciers (excluding the large terminal lakes) and 3.2% for Khumbu Glacier (which does not host a terminal lake) (Watson et al., 2016). While these relationships should be interpreted cautiously, our results support the suggestion of greater relief on glaciers with a greater proportion of supraglacial ponds (King et al., 2020; Mölg et al., 2020; Thompson et al., 2016; Vincent et al., 2016), but with the caveat that such relief may be dampened by the formation of large terminal lakes, which are associated with more efficient supraglacial stream networks that remove water from the glacier surface where ponds may otherwise develop (Watson et al., 2016).

The positive relationship between hummock amplitude and glacier size is supported by our surface roughness calculations. Roughness was greater along-glacier (in Y) than in X on Gezhongkang and Jiuda Glaciers, where the slopes of the sampled areas are  $3.7$  and  $4.1^\circ$  compared to  $<2.0^\circ$  on the other three glaciers (Table 1). This observation suggests that more steeply sloping debris-covered glaciers experience slightly greater gravitational redistribution of debris along-glacier. An issue that arises from the detrending Y profiles for glacier slope is that where the slope of the sampled area is removed, the possible influence of glacier gradient on slopes across the study area is negated. However, the observation of twice as steep slopes in X would hold true without detrending in Y, as the hummock slopes would remain subdued but more tilted in the direction of the glacier slope.

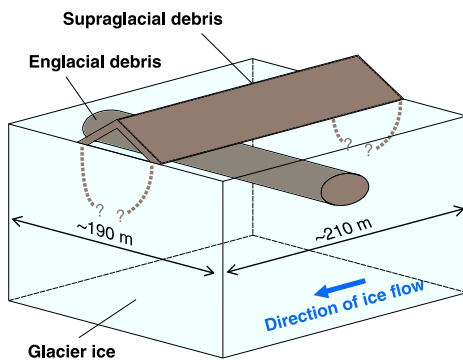
## 4.3 | Processes and conditions for hummock formation and evolution

Here we discuss the most important processes that are expected to influence hummock morphology both along- and across-glacier. Hummock morphometry exhibits consistent directional anisotropy in several ways: the along-glacier profiles undulate on longer length scales and with lower amplitude and thus are more gently sloping than the across-glacier transects (Figure 4). The systematic difference found between the RMSD measurements in the across- and along-glacier directions confirms that hummocky topography is anisotropic (Figure 5; Table 4), and its creation and/or evolution involve(s) directional processes (Smith, 2014). We expect that variations in hummock geometry along-glacier could result from variations in debris supply to the glacier from hillslopes, variations in ice flow, redistribution of debris on the glacier surface by gravitational processes and differential ablation. Variations in hummock geometry across-glacier are likely to be influenced by the same factors, and additionally by the erosion of debris from the inner faces of lateral moraines, which further promotes differential ablation and may explain the greater across-glacier relief we observed from our population of hummocks.

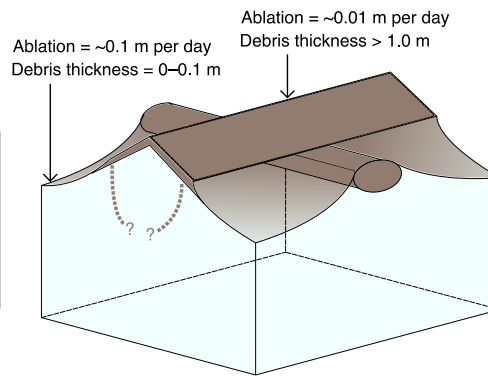
Ice flow is an obvious candidate in controlling the formation and evolution of hummocks that would account for their universal elongation along-glacier. Rockfalls from hillslope failures and sediment incorporated into snow avalanches contribute debris directly to the glacier surface. In the accumulation area, this debris is submerged and transported englacially to emerge in the ablation area. Emergent debris and sediment deposited directly on the glacier surface in the ablation area will be transported supraglacially and become elongated along-glacier. Observations from glaciers with less mature debris layers than those in the Everest region indicate that hummocky topography initially forms from pronounced medial moraines (Mölg et al., 2020), and these longitudinal forms appear to persist as the debris layer thickens to cover the entire glacier width. These observations support the interpretation that the distribution and transport of englacial debris by ice flow is an important control in the formation of supraglacial hummocks (Figure 7a). Figure 7 describes our hypothesized formation process inferred mainly from surface topography and general concepts of glacier sediment distribution. Testing this conceptual model would require targeted field investigation that probes specifically for the



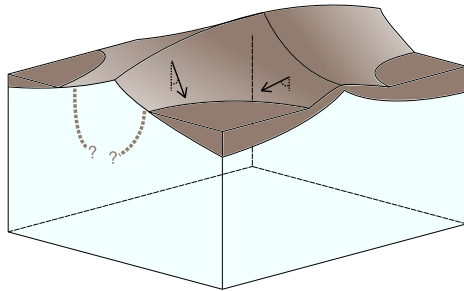
**A** Supraglacial linear debris feature overlying transverse englacial debris band.



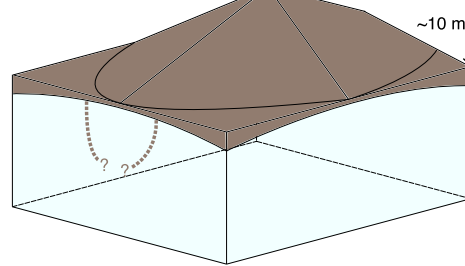
**B** Differential ablation causes increased surface lowering in areas of reduced debris cover.



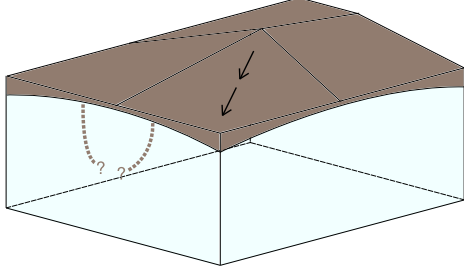
**C** Debris rolls down slopes, exposing bare ice. Steeper slopes remove more debris.



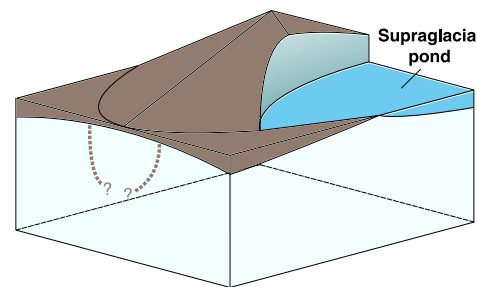
**D** Differential ablation causes preferential lowering of the exposed flanks. Debris re-covers ice, forming a hummock.



**E** Downslope movement of debris from steep flanks. Differential ablation lowers the top of the landform, where debris cover is thinnest.



**F** Debris avalanches off steep slopes to form ice cliffs. Ponds may form at the base of the cliff.



**FIGURE 7** Schematic of supraglacial hummock formation. (A) to (D) outline the genesis of the hummock landform. Ablation and debris thickness in (B) are nominal values intended for illustrating the trends observed by Østrem (1959). (E) Low-angle flanks induce less gravitational redistribution and lead to a gradual decay of the hummock. (F) Steep hummock flanks are prone to avalanching of debris, which can expose the underlying ice, leading to enhanced ablation via backwasting and ice cliff formation. Dashed brown curves indicate the approximate lateral boundaries of the englacial sediment-rich zone which provides sediment to the supraglacial ridge [Colour figure can be viewed at [wileyonlinelibrary.com](http://wileyonlinelibrary.com)]

subsurface sediment configuration, which is difficult to carry out; we know of only one such field study in the Himalaya (Miles et al., 2021).

As hillslope erosion rates exhibit temporal and spatial variability that is difficult to constrain or infer from observations (e.g. Banerjee & Wani, 2018; Scherler, 2014), the rate of debris input to glaciers is often assumed to be uniform over both time and space in models of debris-covered glacier evolution (e.g. Anderson & Anderson, 2018; Rowan et al., 2015). However, pronounced spatial non-uniformity in englacial debris concentrations (Miles et al., 2021) and distinct englacial debris structures occur within such glaciers (Kirkbride & Deline, 2013). Spatially discrete debris inputs, such as rockfalls from hillslopes and the inner surfaces of lateral moraines, constitute a leading candidate reason behind such non-uniformity, and could lead to the formation of highly variable debris surface undulations. Furthermore, reduction in ice flow of the lower reaches of the glacier poses the possibility of englacial thrusting (Moore et al., 2013), which provides an additional mechanism for altering englacial debris structures and inducing variability in the spatial distribution of debris. Consequently, the spatial distribution and geometry of englacial debris septa may be fundamental to the evolution of hummocky topography. To verify these ideas, observations are required of englacially entrained

debris volumes and debris concentrations within the ice and their spatial variability (e.g. Miles et al., 2021).

The glaciers in our study area are enclosed by prominent ice-marginal moraines and corresponding lateral morainic troughs that prevent the transport of debris from hillslopes to the glacier tongues (Hambrey et al., 2008) and inhibit the removal of debris from the glacier surface (Anderson & Anderson, 2016). Therefore, at present, direct deposition of sediment from surrounding slopes to the lower ablation area is limited to that sourced from the collapse of the inner faces of lateral moraines, but the runout distance of such deposits is expected to be much less than the glacier width (van Woerkom et al., 2019). Given the predominant tendency for the medial moraines to have their axes oriented along-glacier, we generally anticipate that ice is uniformly thermally insulated by medial moraines, whereas across-glacier insulation is more variable (due to alternation between successive tracts of cleaner ice and more sediment-laden ice at the position of medial moraines), and the areas of cleaner ice between debris septa will ablate more rapidly to form depressions and create gradients for the gravitational redistribution of debris (Figures 7b and c). Quite probably such a configuration helps precondition the observed anisotropy. Where medial moraines intersect underlying transverse (across-glacier) englacial debris septa, there is potential for localized

differential ablation near the intersection (Figure 7b), particularly if ice flow is reduced so that rearrangement of debris occurs mostly by gravity (Kirkbride & Deline, 2013). As multiple undulations in the debris surface also occur across-glacier, redistribution of debris away from hummock flanks must also occur in this direction.

Greater differential ablation gradients across-glacier promote the evolution of deeper surface depressions and greater slopes (Figures 7c and d), which is reflected in the form of surface hummocks, where amplitudes and mean slopes are greater across-glacier than along-glacier. In addition, the occurrence of maximum RMSD at greater horizontal intervals across-glacier than along-glacier highlights the prevalence of larger topographic variations in the across-glacier direction, which is also evident from the differences in  $H2$  scaling behaviour in X and Y (Figures 4 and 5). The greater across-glacier relief may result from the additional input of debris at the glacier margins from the collapse of lateral moraines (van Woerkom et al., 2019), the higher debris concentrations in the ice resulting from the presence of medial moraines (Mölg et al., 2020), the elongation of hummocks along-glacier reducing their relief in this direction relative to across-glacier, variations in englacial debris concentration and ice flow over time, and could be enhanced by erosion of the debris surface by supraglacial streams that tend to flow along-glacier between medial moraines and remove fine sediment (Fyffe et al., 2019; King et al., 2020; Miles et al., 2019; Mölg et al., 2020).

Once hummocks are established, the debris surface will continue to be modified by differential ablation due to spatial disparities in debris thickness. Hence, the genesis of hummocky topography is likely the combined result of the effect of ice flow on the spatial distribution and concentration of englacially entrained debris, and subsequent feedbacks between the evolving debris topography and differential ablation (Bosson & Lambiel, 2016). Gravitational redistribution of debris, driven by differential ablation, acts to damp surface roughness (Figure 7e) (Capt et al., 2016). Therefore, for the observed hummocky topography to exist and persist, additional processes are required to maintain relatively high levels of surface roughness, particularly across-glacier. These processes likely comprise enhanced ablation at supraglacial ponds and ice cliffs (Figure 7f) (Buri et al., 2016; Miles et al., 2016, 2018; Reid & Brock, 2014; Westoby et al., 2020). As hummocks provide the conditions for cliff and pond formation, feedbacks may exist whereby hummocks enable supraglacial pond and ice cliff development, which in turn deepens and steepens local areas on the glacier surface to sustain their topographic relief (King et al., 2020; Miles et al., 2016). Additionally, the development of glacier karst may enhance hummocky topography by the collapse of englacial conduits and the development of large supraglacial ponds (Benn et al., 2012; Watanabe et al., 1994). Therefore, supraglacial debris hummocks, and the inherent spatial non-uniformity in englacial debris volume that causes them to form and evolve, have important implications for supraglacial hydrology and the hazards posed by the evolution of supraglacial lakes on debris-covered glaciers (Benn et al., 2012; Thompson et al., 2016).

Significant variability occurred across our observed hummocks, which limits the strength of assessments made in this study. We could not, for example, convincingly identify changes in hummock geometry in the down-glacier direction along each glacier tongue; not only did cursory examination of the X and Y transects reveal no trends, it was unclear at what spatial scale(s) the X transects

should be grouped and the Y profiles segmented to enable robust analysis of down-glacier changes—the present work is thus restricted to the scale of each glacier. Future investigations should evaluate and test our inferences about the glacier-scale controls on hummock morphometry with observational data from many more debris-covered glaciers, by examining their surface topography and morphology with the methods and classification developed here. There is also an opportunity to investigate the time evolution of hummock morphology on some glaciers by using high-resolution DEMs from multiple years (e.g. Westoby et al., 2020), such as the recent 8-m High Mountain Asia DEM (Shean, 2017), which would allow identification of the processes operating as areas of high-relief expand up-glacier (King et al., 2020).

## 5 | CONCLUSIONS

We present the first detailed quantification and statistical analyses of supraglacial hummocky topography using over 1000 individual hummocks on five debris-covered glaciers in the Everest region. We established supraglacial hummocks as a distinct landform and characterized their morphology to infer the processes that drive their origin and evolution. A first-order classification for the shape of hummocks, strengthened by statistical assessment of their surface profiles, is given for our chosen glaciers. Typical hummocks are  $214 \pm 109$  m long and are distinguishable from natural background roughness at scales of 55–90 m. Hummocks are decimetres in amplitude, with mean flank slopes typically of 5–10°. A remarkable finding is the directional anisotropy in their shape and size, which is reflected by anisotropy in surface roughness. Hummocks have a mean elongation ratio of 1.1:1 along-glacier and are generally 3 m taller and 3° steeper across-glacier than along-glacier.

Despite much geometrical variation in the population of hummocks studied, we discovered universal patterns in their form across the five glaciers. We propose that relatively large and spatially non-uniform debris concentrations within debris-covered glaciers, which may result from changes in ice flow and headwall erosion, are the dominant control on the origin of hummocky topography. The observed anisotropy in hummock geometry supports the notion that the orientation of ice flow causes the landform to originate and/or affects its evolution. Hummocky topography is further modified by gravitational redistribution of debris across the glacier surface, differential ablation at ice cliffs and supraglacial ponds, and reworking of the glacier surface by supraglacial streams. We therefore expect that improved understanding of the processes that form and maintain hummocky topography on debris-covered glaciers is important for understanding how glacier mass balance varies over time. Moreover, if hummocky topography does indeed reflect past variations in ice flow and headwall erosion, then these landforms could be considered a record of climatically driven changes in glacier behaviour over a longer period than can be investigated directly (e.g. by using satellite imagery).

## ACKNOWLEDGEMENTS

We thank Owen King for use of the corrected SETSM DEM. This research did not receive any specific grant from funding agencies in the public, commercial or not-for-profit sectors. We thank the

Associate Editor, Duncan Quincey and an anonymous reviewer for their thoughtful comments that improved the presentation of this work.

## CONFLICT OF INTEREST

The authors declare no conflict of interest.

## AUTHOR CONTRIBUTIONS

FSLN and AVR developed the original concept of the study. OTB undertook the geomorphological assessment using the linear transect sampling algorithm developed by FSLN, as well as all of the GIS and statistical calculations. All authors contributed to and reviewed the final manuscript.

## DATA AVAILABILITY STATEMENT

Uncorrected SETSM DEMs are available for download from <http://www.pgc.umn.edu/elevation>. The SRTM dataset is available from <https://lta.cr.usgs.gov/SRTM1Arc>.

## ORCID

Oliver T. Bartlett  <https://orcid.org/0000-0002-0347-7926>

Felix S.L. Ng  <https://orcid.org/0000-0001-6352-0351>

Ann V. Rowan  <https://orcid.org/0000-0002-3715-5554>

## REFERENCES

- Anderson, L.S. & Anderson, R.S. (2016) Modeling debris-covered glaciers: Response to steady debris deposition. *The Cryosphere*, 10(3), 1105–1124. <https://doi.org/10.5194/tc-10-1105-2016>
- Anderson, L.S. & Anderson, R.S. (2018) Debris thickness patterns on debris-covered glaciers. *Geomorphology*, 311, 1–12. <https://doi.org/10.1016/j.geomorph.2018.03.014>
- Anderson, R.S. (2000) A model of ablation-dominated medial moraines and the generation of debris-mantled glacier snouts. *Journal of Glaciology*, 46(154), 459–469. <https://doi.org/10.3189/172756500781833025>
- Banerjee, A. & Wani, B.A. (2018) Exponentially decreasing erosion rates protect the high-elevation crests of the Himalaya. *Earth and Planetary Science Letters*, 497, 22–28. <https://doi.org/10.1016/j.epsl.2018.06.001>
- Benn, D.I., Bolch, T., Hands, K., Gulley, J., Luckman, A., Nicholson, L.I. et al. (2012) Response of debris-covered glaciers in the Mount Everest region to recent warming, and implications for outburst flood hazards. *Earth-Science Reviews*, 114(1), 156–174. <https://doi.org/10.1016/j.earscirev.2012.03.008>
- Benn, D.I. & Lehmkuhl, F. (2000) Mass balance and equilibrium-line altitudes of glaciers in high-mountain environments. *Quaternary International*, 65, 15–29. [https://doi.org/10.1016/S1040-6182\(99\)00034-8](https://doi.org/10.1016/S1040-6182(99)00034-8)
- Bosson, J.B. & Lambiel, C. (2016) Internal structure and current evolution of very small debris-covered glacier systems located in alpine permafrost environments. *Frontiers in Earth Science*, 4, 39–57. <https://doi.org/10.3389/feart.2016.00039>
- Brun, F., Buri, P., Miles, E.S., Wagnon, P., Steiner, J., Berthier, E. et al. (2016) Quantifying volume loss from ice cliffs on debris-covered glaciers using high-resolution terrestrial and aerial photogrammetry. *Journal of Glaciology*, 62(234), 684–695. <https://doi.org/10.1017/jog.2016.54>
- Brun, F., Wagnon, P., Berthier, E., Shea, J.M., Immerzeel, W.W., Kraaijenbrink, P.D.A. et al. (2018) Ice cliff contribution to the tongue-wide ablation of Changri Nup Glacier, Nepal, central Himalaya. *The Cryosphere*, 12(11), 3439–3457. <https://doi.org/10.5194/tc-12-3439-2018>
- Buri, P., Miles, E.S., Steiner, J.F., Immerzeel, W.W., Wagnon, P. & Pellicciotti, F. (2016) A physically based 3-D model of ice cliff evolution over debris-covered glaciers. *Journal of Geophysical Research: Earth Surface*, 121(12), 2471–2493. <https://doi.org/10.1002/2016JF004039>
- Capt, M., Bosson, J.B., Fischer, M., Micheletti, N. & Lambiel, C. (2016) Decadal evolution of a very small heavily debris-covered glacier in an Alpine permafrost environment. *Journal of Glaciology*, 62(233), 535–551. <https://doi.org/10.1017/jog.2016.56>
- Chandler, B.M., Evans, D.J. & Roberts, D.H. (2016) Characteristics of recessional moraines at a temperate glacier in SE Iceland: Insights into patterns, rates and drivers of glacier retreat. *Quaternary Science Reviews*, 135, 171–205. <https://doi.org/10.1016/j.quascirev.2016.01.025>
- Fyfe, C.L., Brock, B.W., Kirkbride, M.P., Mair, D.W.F., Arnold, N.S., Smiraglia, C. et al. (2019) Do debris-covered glaciers demonstrate distinctive hydrological behaviour compared to clean glaciers? *Journal of Hydrology*, 570, 584–597. <https://doi.org/10.1016/j.jhydrol.2018.12.069>
- Fyfe, C.L., Woodget, A.S., Kirkbride, M.P., Deline, P., Westoby, M.J. & Brock, B.W. (2020) Processes at the margins of supraglacial debris cover: Quantifying dirty ice ablation and debris redistribution. *Earth Surface Processes and Landforms*, 264(17), 43–19. <https://doi.org/10.1002/esp.4879>
- Gadelmawla, E.S., Koura, M.M., Maksoud, T.M.A., Elewa, I.M. & Soliman, H. H. (2002) Roughness parameters. *Journal of Materials Processing Technology*, 123(1), 133–145. [https://doi.org/10.1016/S0924-0136\(02\)00060-2](https://doi.org/10.1016/S0924-0136(02)00060-2)
- Hambrey, M.J., Quincey, D.J., Glasser, N.F., Reynolds, J.M., Richardson, S. J. & Clemmens, S. (2008) Sedimentological, geomorphological and dynamic context of debris-mantled glaciers, Mount Everest (Sagarmatha) region, Nepal. *Quaternary Science Reviews*, 27(25), 2361–2389. <https://doi.org/10.1016/j.quascirev.2008.08.010>
- Herreid, S. & Pellicciotti, F. (2020) The state of rock debris covering Earth's glaciers. *Nature Geoscience*, 1–18. <https://doi.org/10.1038/s41561-020-0615-0>
- Iwata, S., Aoki, T., Kadota, T., Seko, K. & Yamaguchi, S. (2000) Morphological evolution of the debris cover on Khumbu Glacier, Nepal, between 1978 and 1995. In *Debris-Covered Glaciers: Proceedings of Workshop*, Seattle, WA; 3–11.
- Juen, M., Mayer, C., Lambrecht, A., Han, H. & Liu, S. (2014) Impact of varying debris cover thickness on ablation: A case study for Koxkar Glacier in the Tien Shan. *The Cryosphere*, 8(2), 377–386. <https://doi.org/10.5194/tc-8-377-2014>
- King, O., Turner, A.G.D., Quincey, D.J. & Carrivick, J.L. (2020) Morphometric evolution of Everest region debris-covered glaciers. *Geomorphology*, 371, 107422. <https://doi.org/10.1016/j.geomorph.2020.107422>
- Kirkbride, M.P. & Deline, P. (2013) The formation of supraglacial debris covers by primary dispersal from transverse englacial debris bands. *Earth Surface Processes and Landforms*, 38(15), 1779–1792. <https://doi.org/10.1002/esp.3416>
- Kraaijenbrink, P.D.A., Bierkens, M.F.P., Lutz, A.F. & Immerzeel, W.W. (2017) Impact of a global temperature rise of 1.5 degrees Celsius on Asia's glaciers. *Nature*, 549(7671), 257–260. <https://doi.org/10.1038/nature23878>
- Main, I.G., Leonard, T., Papasoulitis, O., Hatton, C.G. & Meredith, P.G. (1999) One slope or two? Detecting statistically significant breaks of slope in geophysical data, with application to fracture scaling relationships. *Geophysical Research Letters*, 26(18), 2801–2804. <https://doi.org/10.1029/1999GL005372>
- Miles, E.S., Pellicciotti, F., Willis, I.C., Steiner, J.F., Buri, P. & Arnold, N.S. (2016) Refined energy-balance modelling of a supraglacial pond, Langtang Khola, Nepal. *Annals of Glaciology*, 57(71), 29–40. <https://doi.org/10.3189/2016AoG71A421>
- Miles, E.S., Willis, I., Buri, P., Steiner, J.F., Arnold, N.S. & Pellicciotti, F. (2018) Surface pond energy absorption across four Himalayan glaciers accounts for 1/8 of total catchment ice loss. *Geophysical Research Letters*, 45(19), 4545–4510. <https://doi.org/10.1029/2018GL079678>
- Miles, K., Hubbard, B., Miles, E., Quincey, D.J., Rowan, A.V., Kirkbride, M. (2021) Continuous borehole optical televiewing reveals variable englacial debris concentrations at Khumbu Glacier, Nepal. *Nature Communications Earth and Environment*, in press.



- Miles, K.E., Hubbard, B., Quincey, D.J., Miles, E.S., Irvine-Fynn, T.D.L. & Rowan, A.V. (2019) Surface and subsurface hydrology of debris-covered Khumbu Glacier, Nepal, revealed by dye tracing. *Earth and Planetary Science Letters*, 513, 176–186. <https://doi.org/10.1016/j.epsl.2019.02.020>
- Mölg, N., Ferguson, J., Bolch, T. & Vieli, A. (2020) On the influence of debris cover on glacier morphology: How high-relief structures evolve from smooth surfaces. *Geomorphology*, 357, 107092. <https://doi.org/10.1016/j.geomorph.2020.107092>
- Moore, P.L. (2017) Stability of supraglacial debris. *Earth Surface Processes and Landforms*, 10, 1105–1113. <https://doi.org/10.1002/esp.4244>
- Moore, P.L., Winberry, J.P., Iverson, N.R., Christianson, K.A., Anandakrishnan, S., Jackson, M. et al. (2013) Glacier slip and seismicity induced by surface melt. *Geology*, 41(12), 1247–1250. <https://doi.org/10.1130/G34760.1>
- Moser, K., Ahn, C. & Noe, G. (2007) Characterization of microtopography and its influence on vegetation patterns in created wetlands. *Wetlands*, 27(4), 1081–1097.
- Nicholson, L. & Benn, D.I. (2006) Calculating ice melt beneath a debris layer using meteorological data. *Journal of Glaciology*, 52(178), 463–470. <https://doi.org/10.3189/172756506781828584>
- Nicholson, L. & Mertes, J. (2017) Thickness estimation of supraglacial debris above ice cliff exposures using a high-resolution digital surface model derived from terrestrial photography. *Journal of Glaciology*, 24, 1–10. <https://doi.org/10.1017/jog.2017.68>
- Noh, M.J. & Howat, I.M. (2015) Automated stereo-photogrammetric DEM generation at high latitudes: Surface extraction with TIN-based search-space minimization (SETSM) validation and demonstration over glaciated regions. *GIS Science and Remote Sensing*, 52, 198–217. <https://doi.org/10.1080/15481603.2015.1008621>
- Nuth, C. & Kääb, A. (2011) Co-registration and bias corrections of satellite elevation data sets for quantifying glacier thickness change. *The Cryosphere*, 5, 271–290. <https://doi.org/10.5194/tc-5-271-2011>
- Oerlemans, J. (1989) On the response of valley glaciers to climatic change. In *Glacier Fluctuations and Climatic Change*, Oerlemans, J. (ed). Springer: Dordrecht; 353–371.
- Østrem, G. (1959) Ice melting under a thin layer of moraine, and the existence of ice cores in moraine ridges. *Geografiska Annaler*, 41(4), 228–230.
- Pfeffer, W.T., Arendt, A.A., Bliss, A., Bolch, T., Cogley, J.G., Gardner, A.S. et al. (2014) The Randolph Glacier Inventory: A globally complete inventory of glaciers. *Journal of Glaciology*, 60(221), 537–552. <https://doi.org/10.3189/2014JoG13J176>
- Qiao, L., Mayer, C. & Liu, S. (2015) Distribution and interannual variability of supraglacial lakes on debris-covered glaciers in the Khan Tengri-Tumour Mountains, Central Asia. *Environmental Research Letters*, 10(1), 014014. <https://doi.org/10.1088/1748-9326/10/1/014014>
- Quincey, D.J., Luckman, A. & Benn, D. (2009) Quantification of Everest region glacier velocities between 1992 and 2002, using satellite radar interferometry and feature tracking. *Journal of Glaciology*, 55(192), 596–606. <https://doi.org/10.3189/002214309789470987>
- Quincey, D.J., Richardson, S.D., Luckman, A., Lucas, R.M., Reynolds, J.M., Hambrey, M.J. et al. (2007) Early recognition of glacial lake hazards in the Himalaya using remote sensing datasets. *Global and Planetary Change*, 56(1), 137–152. <https://doi.org/10.1016/j.gloplacha.2006.07.013>
- Reid, T.D. & Brock, B.W. (2014) Assessing ice-cliff backwasting and its contribution to total ablation of debris-covered Miage glacier, Mont Blanc massif, Italy. *Journal of Glaciology*, 60(219), 3–13. <https://doi.org/10.3189/2014JoG13J045>
- Reznichenko, N., Davies, T., Shulmeister, J. & McSaveney, M. (2010) Effects of debris on ice-surface melting rates: An experimental study. *Journal of Glaciology*, 56(197), 384–394. <https://doi.org/10.3189/002214310792447725>
- Röhl, K. (2008) Characteristics and evolution of supraglacial ponds on debris-covered Tasman Glacier, New Zealand. *Journal of Glaciology*, 54(188), 867–880. <https://doi.org/10.3189/002214308787779861>
- Rosenburg, M.A., Aharonson, O., Head, J.W., Kreslavsky, M.A., Mazarico, E., Neumann, G.A. et al. (2011) Global surface slopes and roughness of the Moon from the Lunar Orbiter Laser Altimeter. *Journal of Geophysical Research: Planets*, 116(2). <https://doi.org/10.1029/2010JE003716>
- Rowan, A.V., Egholm, D.L., Quincey, D.J. & Glasser, N.F. (2015) Modelling the feedbacks between mass balance, ice flow and debris transport to predict the response to climate change of debris-covered glaciers in the Himalaya. *Earth and Planetary Science Letters*, 430, 427–438. <https://doi.org/10.1016/j.epsl.2015.09.004>
- Ruggieri, E. & Antonellis, M. (2016) An exact approach to Bayesian sequential change point detection. *Computational Statistics and Data Analysis*, 97, 71–86. <https://doi.org/10.1016/j.csda.2015.11.010>
- Scherler, D. (2014) Climatic limits to headwall retreat in the Khumbu Himalaya, eastern Nepal. *Geology*, 42(11), 1019–1022. <https://doi.org/10.1130/G35975.1>
- Schomacker, A. (2008) What controls dead-ice melting under different climate conditions? A discussion. *Earth-Science Reviews*, 90(3), 103–113. <https://doi.org/10.1016/j.earscirev.2008.08.003>
- Shean, D. (2017) *High Mountain Asia 8-meter DEM Mosaics Derived from Optical Imagery*, Version 1. NASA National Snow and Ice Data Center: Boulder, CO.
- Shean, D.E., Alexandrov, O., Moratto, Z.M., Smith, B.E., Joughin, I.R., Porter, C. et al. (2016) An automated, open-source pipeline for mass production of digital elevation models (DEMs) from very-high-resolution commercial stereo satellite imagery. *ISPRS Journal of Photogrammetry and Remote Sensing*, 116(C), 101–117. <https://doi.org/10.1016/j.isprsjprs.2016.03.012>
- Shepard, M.K., Campbell, B.A., Bulmer, M.H., Farr, T.G., Gaddis, L.R. & Plaut, J.J. (2001) The roughness of natural terrain: A planetary and remote sensing perspective. *Journal of Geophysical Research*, 106(E12), 32777–32795. <https://doi.org/10.1029/2000JE001429>
- Smith, M.W. (2014) Roughness in the earth sciences. *Earth-Science Reviews*, 136, 202–225. <https://doi.org/10.1016/j.earscirev.2014.05.016>
- Thakuri, S., Salerno, F., Bolch, T., Guyennon, N. & Tartari, G. (2016) Factors controlling the accelerated expansion of Imja Lake, Mount Everest region, Nepal. *Annals of Glaciology*, 57(71), 245–257. <https://doi.org/10.3189/2016AoG71A063>
- Thakuri, S., Salerno, F., Smiraglia, C., Bolch, T., D'Agata, C., Viviano, G. et al. (2014) Tracing glacier changes since the 1960s on the south slope of Mt. Everest (Central Southern Himalaya) using optical satellite imagery. *The Cryosphere*, 8(4), 1297–1315. <https://doi.org/10.5194/tc-8-1297-2014>
- Thompson, S., Benn, D.I., Mertes, J. & Luckman, A. (2016) Stagnation and mass loss on a Himalayan debris-covered glacier: Processes, patterns and rates. *Journal of Glaciology*, 1–19. <https://doi.org/10.1017/jog.2016.37>
- Tonkin, T.N., Midgley, N.G., Cook, S.J. & Graham, D.J. (2016) Ice-cored moraine degradation mapped and quantified using an unmanned aerial vehicle: A case study from a polythermal glacier in Svalbard. *Geomorphology*, 258, 1–10. <https://doi.org/10.1016/j.geomorph.2015.12.019>
- van Woerkom, T., Steiner, J.F., Kraaijenbrink, P.D.A., Miles, E.S. & Immerzeel, W.W. (2019) Sediment supply from lateral moraines to a debris-covered glacier in the Himalaya. *Earth Surface Dynamics*, 7(2), 411–427. <https://doi.org/10.5194/esurf-7-411-2019>
- Vázquez, E.V., Miranda, J.V. & González, A.P. (2005) Characterizing anisotropy and heterogeneity of soil surface microtopography using fractal models. *Ecological Modelling*, 182(3), 337–353. <https://doi.org/10.1016/j.ecolmodel.2004.04.012>
- Vincent, C., Wagnon, P., Shea, J.M., Immerzeel, W.W., Kraaijenbrink, P., Shrestha, D. et al. (2016) Reduced melt on debris-covered glaciers: Investigations from Changri Nup Glacier, Nepal. *The Cryosphere*, 10, 1845–1858. <https://doi.org/10.5194/tc-10-1845-2016>
- Watanabe, T., Ives, J.D. & Hammond, J.E. (1994) Rapid growth of a glacial lake in Khumbu Himal, Himalaya: Prospects for a catastrophic flood. *Mountain Research and Development*, 329–340. <https://doi.org/10.2307/3673729>
- Watson, C.S., Quincey, D.J., Carrivick, J.L. & Smith, M.W. (2016) The dynamics of supraglacial ponds in the Everest region, central Himalaya. *Global and Planetary Change*, 142, 14–27. <https://doi.org/10.1016/j.gloplacha.2016.04.008>

- Watson, C.S., Quincey, D.J., Carrivick, J.L. & Smith, M.W. (2017) Ice cliff dynamics in the Everest region of the Central Himalaya. *Geomorphology*, 278(C), 238–251. <https://doi.org/10.1016/j.geomorph.2016.11.017>
- Westoby, M.J., Rounce, D.R., Shaw, T.E., Fyffe, C.L., Moore, P.L., Stewart, R.L. *et al.* (2020) Geomorphological evolution of a debris-covered glacier surface. *Earth Surface Processes and Landforms*, 45 (14), 3431–3448. <https://doi.org/10.1002/esp.4973>

**How to cite this article:** Bartlett OT, Ng FSL, Rowan AV. Morphology and evolution of supraglacial hummocks on debris-covered Himalayan glaciers. *Earth Surf Process Landforms*. 2021;46:525–539. <https://doi.org/10.1002/esp.5043>