

Citation for published version:

C Sian MacRae, et al., "Do rocker-sole shoes influence postural stability in chronic low back pain? A randomised trial", *BMJ Open Sport & Exercise Medicine*, Vol. 2(1), October 2016.

LINK TO PUBLICATION:

[10.1136/bmjsem-2016-000170](https://doi.org/10.1136/bmjsem-2016-000170)

Document Version:

This is the Published Version.

Copyright and Reuse:

Published by the BMJ Publishing Group Limited. For permission to use (where not already granted under a licence) please go to <http://www.bmj.com/company/products-services/rights-and-licensing/>

This is an Open Access article distributed in accordance with the terms of the Creative Commons Attribution (CC BY 4.0) license, which permits others to distribute, remix, adapt and build upon this work, for commercial use, provided the original work is properly cited. See: <http://creativecommons.org/licenses/by/4.0/>

Enquiries

If you believe this document infringes copyright, please contact the Research & Scholarly Communications Team at rsc@herts.ac.uk

Do rocker-sole shoes influence postural stability in chronic low back pain? A randomised trial

C Sian MacRae,^{1,2} Duncan Critchley,³ Matthew Morrissey,⁴ Adam Shortland,^{5,6} Jeremy S Lewis^{7,8}

To cite: MacRae CS, Critchley D, Morrissey M, *et al*. Do rocker-sole shoes influence postural stability in chronic low back pain? A randomised trial. *BMJ Open Sport Exerc Med* 2016;2:e000170. doi:10.1136/bmjsem-2016-000170

► Prepublication history and additional material is available. To view please visit the journal (<http://dx.doi.org/10.1136/bmjsem-2016-000170>).

Accepted 26 September 2016

ABSTRACT

Background: People with chronic low back pain (CLBP) demonstrate greater postural instability compared with asymptomatic individuals. Rocker-sole shoes are inherently unstable and may serve as an effective balance training device. This study hypothesised that wearing rocker-sole shoes would result in long-term improvement in barefoot postural stability in people with CLBP.

Methods: 20 participants with CLBP were randomised to wear rocker-sole or flat-sole shoes for a minimum of 2 hours each day. Participants were assessed barefoot and shod, over three 40 s trials, under 4 posture challenging standing conditions. The primary outcome was postural stability assessed by root mean squared error of centre of pressure (CoP) displacement (CoP_{RMSE AP}) and mean CoP velocity (CoP_{VELAP}), both in the anteroposterior direction, using force plates. Participants' were assessed without knowledge of group allocation at baseline, 6 weeks and 6 months (main outcome point). Analyses were by intention-to-treat.

Results: At 6 months, data from 11 of 13 (84.6%) of the rocker-sole and 5 of 7 (71.4%) of the flat-sole group were available for analysis. At baseline, there was a mean increase in CoP_{RMSE AP} (6.41 (2.97) mm, $p < 0.01$) and CoP_{VELAP} (4.10 (2.97) mm, $p < 0.01$) in the rocker-sole group when shod compared with barefoot; there was no difference in the flat-sole group. There were no within-group or between-group differences in change in CoP parameters at any time point compared with baseline (1) for any barefoot standing condition (2) when assessed shod eyes-open on firm ground.

Conclusions: Although wearing rocker-sole shoes results in greater postural instability than flat-sole shoes, long-term use of rocker-sole shoes did not appear to influence postural stability in people with CLBP.

INTRODUCTION

Differences in postural control during standing have been reported in people with chronic low back pain (CLBP).^{1–9} During more challenging standing conditions, defined as standing on compliant ground with visual occlusion, people with CLBP demonstrate increased centre of pressure (CoP)

What are the new findings?

- Standing in a rocker-sole shoe reduced postural stability compared with standing barefoot, whereas standing in a flat-sole shoe did not influence postural stability.
- Long-term use of rocker-sole or flat-sole shoes do not influence postural stability in barefoot standing.

How might it impact on clinical practice in the near future?

This study questions the belief that balance rehabilitation, especially when delivered in standing using rocker-sole shoes, will result in a long-term influence on postural control in people with chronic low back pain (CLBP). Treatment approaches directed towards influencing or 'normalising' altered CoP parameters may not be appropriate for people with CLBP.

displacements and velocities, thought to indicate a reduced ability to maintain postural stability.¹⁰ These differences in postural control have been proposed as underpinning mechanisms in the presence and recurrent nature of CLBP.^{7 11}

Greater CoP displacements, interpreted as increased postural instability, are reported during standing wearing rocker-sole compared with traditional flat-sole shoes,^{12–14} suggesting rocker-sole shoes may act as a balance training device. Rehabilitation with proprioceptive or balance training has demonstrated clinical benefits in people with functional ankle instability and anterior cruciate ligament-deficient knees^{15 16} and is recommended as a CLBP treatment.¹⁷ To the authors' knowledge, no published study has investigated the short-term and long-term influence of rocker-sole shoes on postural stability in people with CLBP. Hence, the following hypotheses were investigated:



CrossMark

For numbered affiliations see end of article.

Correspondence to

Dr C Sian MacRae; sian.macrae@brunel.ac.uk

H1: Standing in rocker-sole shoes will promote a greater postural instability than standing in flat-sole shoes in the anteroposterior direction compared with barefoot standing.

H2: Individuals presenting with CLBP who wear rocker-sole shoes as part of their rehabilitation programme will improve their barefoot standing stability in the anteroposterior direction in the shorter (6 weeks) and longer term (6 months) against those who wear standard flat-sole trainers.

METHODS

This randomised trial with repeated measures recruited participants from a study investigating the influence of footwear on CLBP.¹⁸

Participant recruitment, consent and randomisation

Following ethical approval from Outer North London Research Ethics Committee (REC: 10/H0724/7), 20 participants, previously consented and block randomised in a clinical study investigating the effects of footwear on CLBP,¹⁸ were invited to take part by CSM. Inclusion criteria were: aged 18–65 years, with a 3-month or greater history of LBP. Exclusion criteria were as the main trial,¹⁸ excluding constant LBP, specific spinal diagnosis inappropriate for physiotherapy interventions (eg, spinal fracture or infection); any condition inappropriate for exercise physiotherapy (eg, severe cardiovascular or metabolic disease) or for wearing rocker-sole footwear (eg, Morton's neuroma, peripheral neuropathy); and participants who had previously used rocker-sole shoes.

Interventions

On consenting and entering the current study, participants were already allocated either the rocker-sole (Masai Barefoot Technology (MBT) Chapa Caviar, Masai GB Limited, London, UK) or the flat-sole shoe (Gel 1140, ASICS, Warrington, UK) (figure 1).¹⁸

Participants had been fitted with their allocated footwear type and taught how to walk in their shoes (see online supplementary appendix 1). They were instructed not to wear their allocated shoes prior to baseline biomechanical assessment, then wear them for a minimum of 2 hours/day while standing or walking for the study duration. Between baseline and 6-week assessment, participants attended a 4-week LBP exercise group (fulfilling methods of the main clinical study participants were recruited from¹⁸).

Data collection

Data collection occurred at the 'One Small Step Gait Laboratory', Guys' Hospital, London. Demographic, back-pain disability (Roland-Morris Questionnaire) and pain scores (numerical rating scale) were recorded at baseline.



Figure 1 Study shoes: rocker-sole shoe (top); flat-sole shoe (bottom).

Biomechanical assessment

Participants were assessed wearing short trousers and vest or no top. Participants' anthropometric measurements (pelvic width; leg length; knee width; ankle width; height; and weight) were recorded to inform the mechanical model formulated for each participant in Vicon's Nexus (1.8.1) motion capture software (Vicon Motions systems, Oxford, UK).

Participants were assessed barefoot and shod, with their feet on adjacent force plates (FP5000, AMTI, Massachusetts, USA), during four posture-challenging standing conditions involving manipulation of visual input and support surface: (1) firm surface, eyes-open; (2) firm surface, eyes-closed; (3) compliant surface, eyes-open; (4) compliant surface, eyes-closed. Compliant surface was achieved by placing an Airex™ cushion (48.5×40.0×6.4 cm, 0.7 kg, high density (50 kg/m³), closed-cell foam) (I-group, St Louis, Missouri, USA) over each force plate (figure 2).

Barefoot assessment

Participants stood barefoot, feet approximately pelvis width apart and were instructed to keep their eyes focused on a red sticker at eye height on a tripod 3 m in front of them.¹⁹ Participants were assessed for three 40 s trials (shown to produce acceptable reliability²⁰) for each standing condition. The middle 30 s of each trial was analysed to avoid possible initial sway errors and effects of participant fatigue or anticipation of a trial ending.

Each participant received the same instructions at the start of each trial:

When I say 'Go' I want you to stand and maintain your balance until you hear the instruction to rest. Each trial will last for 40 seconds. Focus on the red sticker on the tripod ahead of you. Keep your arms relaxed by your sides.



Figure 2 Participant standing on foam cushions overlying force plates.

A rest period of 20 s occurred between each 40 s trial. Sufficient trials were performed to enable three valid sets of data to be recorded. A test was invalidated if the participant: (1) moved their foot position during the test; (2) changed their arm starting position or (3) opened their eyes during an eyes-closed task.

Shod assessment

Study shoes were then put on. The shod assessment protocol was conducted as described in the *Barefoot assessment* section. Shod assessment protocol was conducted by AS; shoes were concealed from CSM to maintain assessor blinding in the main trial.¹⁸

Outcome measures

The following postural stability primary outcomes were assessed at baseline, 6 weeks and 6 months: (1) root mean squared error and (2) velocity of the CoP in the anteroposterior direction ($CoP_{RMSE\ AP}$ and $CoP_{VEL\ AP}$ respectively). Equations, demonstrating how CoP data were calculated, are presented in online supplementary appendix 2.

Sample size

A sample size calculation was not conducted due to the lack of reported data of minimal clinically important

difference for the primary outcome measures (CoP parameters).

Data extraction

Industry-standard motion capture files (.c3d) containing force data were extracted. Force plate data were filtered with a low-pass (10 Hz) Butterworth filter. CoP parameters ($CoP_{RMSE\ AP}$ and $CoP_{VEL\ AP}$) were calculated using a proprietary program written in Visual Basic for Application (Microsoft Excel, Reading, UK).

Data analysis

The primary analysis was by intention-to-treat, including all eligible randomised participants who provided follow-up data. Two-way mixed model (between-within) analysis of variances were conducted with one within-subject (assessment time points) and one between-group factor (footwear type) to compare the influence of footwear type over time and one within-subject (standing condition) and one between-group factor (footwear type) to compare baseline data between groups. Analysis of variance used data from participants with full data sets (rocker-sole group $n=13$, flat-sole group $n=7$ for baseline comparisons and immediate effect of footwear; rocker-sole group $n=11$, flat-sole group $n=5$ for long-term follow-up). Macuhly test of sphericity assumption and Levene's test of equality of variances assumption were considered for within-subject and between-subject effects, respectively. The α level for determining statistical significance was set at 0.05. Data were analysed using IBM SPSS V.20.0.0 (IBM, Armonk, New York, USA). Results are presented as means (SDs) unless otherwise stated.

RESULTS

Twenty participants (from 38 who showed interest in the study) were recruited into the study from June 2010 to November 2010 (the final 6 months of main study recruitment¹⁸). Seven participants had been preredomised to receive the flat-sole and 13 to receive the rocker-sole shoe.¹⁸ There were no differences between the groups in demographic or outcome measures (table 1) at baseline.

Baseline barefoot CoP parameters are presented in table 2. There were no differences between the groups in $CoP_{RMSE\ AP}$, $CoP_{VEL\ AP}$ for any of the four standing conditions ($F(3,51)=0.31$, $p=0.82$, $\eta^2=0.02$; $F(1,76,29.94)=0.15$, $p=0.83$, $\eta^2=0.01$, respectively).

Participant attrition and retention during the study are presented in figure 3. At 6 months, 16 (80%) participants were reassessed.

Comparison of CoP parameters when standing barefoot and standing shod

Standing in rocker-sole shoes, with eyes-open on firm surface, resulted in a mean increase in $CoP_{RMSE\ AP}$ of 6.41 mm ($t(12)=7.77$, $p<0.01$) and $CoP_{VEL\ AP}$ of

Table 1 Baseline characteristics of the study participants

	Flat-sole group (n=7)	Rocker-sole group (n=13)	p Value
Gender			
Male	3 (42.9%)*	6 (46.2%)*	0.89†
Female	4 (57.1%)*	7 (53.8%)*	
Age (years)	37.9 (13.0)	42.6 (12.5)	0.43
Weight (kg)	82.4 (22.0)	70.3 (11.3)	0.12
Height (cm)	173.8 (7.3)	173.5 (9.5)	0.95
Roland Morris	7.9 (1.8)	5.7 (3.3)	0.13
Disability Questionnaire (0–24; 0=best)			
Numerical rating score for pain (0–10; 0=best)	6.3 (1.5)	5.7 (1.7)	0.48

Summary measures represent means (SD).

*Summary measures represent numbers (percentages).

†Data analysed with independent t-test or χ^2 test.

Table 2 Barefoot anteroposterior centre of pressure and postural strategy parameters at baseline

Standing condition	Group	CoP _{RMSE AP} (mm)	CoP _{VEL AP} (mm/s)
Eyes open firm surface	Flat-sole shoe	4.80 (2.47)	7.33 (2.01)
	Rocker-sole shoe	4.39 (1.84)	7.19 (1.13)
Eyes closed firm surface	Flat-sole shoe	4.98 (1.87)	7.54 (1.44)
	Rocker-sole shoe	4.05 (1.26)	7.50 (1.12)
Eyes open compliant surface	Flat-sole shoe	10.06 (2.87)	11.89 (1.18)
	Rocker-sole shoe	8.63 (2.61)	12.67 (4.38)
Eyes closed Compliant surface	Flat-sole shoe	11.06 (2.86)	17.94 (4.32)
	Rocker-sole shoe	10.62 (2.66)	17.75 (4.12)

Summary measures represent means (SD).

AP, anteroposterior; RMSE, root mean squared error; VEL, velocity.

4.10 mm/s ($t(12)=7.14$, $p<0.01$) when compared with standing barefoot (table 3). There was no difference in CoP_{RMSE AP} or CoP_{VEL AP} when standing in flat-sole shoes compared with barefoot (table 3).

Influence of long-term shoe wear on barefoot sagittal plane CoP parameters

Neither the rocker-sole nor the flat-sole group demonstrated change in CoP_{RMSE AP} or CoP_{VEL AP} when assessed barefoot during the most challenging standing condition (eyes-closed, compliant ground), at any follow-up point (rocker-sole group $F(2,20)=2.28$, $p=0.13$,

$\eta^2=0.19$ and $F(2,20)=2.69$, $p=0.09$, $\eta^2=0.21$, respectively; flat-sole group $F(2,8)=1.89$, $p=0.21$, $\eta^2=0.32$ and $F(2,8)=0.27$, $p=0.70$, $\eta^2=0.06$, respectively) (table 4). Furthermore, there were no differences between-groups in CoP_{RMSE AP} or CoP_{VEL AP} at any follow-up point during the most challenging standing condition ($F(2,28)=1.80$, $p=0.19$, $\eta^2=0.11$ and $F(2,28)=0.28$, $p=0.76$, $\eta^2=0.02$).

No difference in CoP_{RMSE AP} or CoP_{VEL AP} was found for the three less challenging standing conditions assessed within-shoe or between-shoe groups at any follow-up point.

Influence of long-term shoe wear on postural control assessed when shod

When standing in study shoes, with eyes-open on firm surface, no significant differences were observed in CoP_{RMSE AP} or CoP_{VEL AP} for either shoe group at any reassessment point (rocker-sole group: $F(2,20)=1.35$, $p=0.28$, $\eta^2=0.12$, and $F(2,20)=1.84$, $p=0.19$, $\eta^2=0.15$, respectively; flat-sole group: $F(2,8)=0.74$, $p=0.51$, $\eta^2=0.16$, $F(2,8)=0.63$, $p=0.56$, $\eta^2=0.14$). Furthermore, while wearing study shoes, there were no differences between-groups in change in CoP_{RMSE AP} or CoP_{VEL AP} at any reassessment point ($F(2,28)=1.18$, $p=0.32$, $\eta^2=0.08$, and $F(2,28)=0.37$, $p=0.70$, $\eta^2=0.03$, respectively) (table 5).

DISCUSSION

This study investigated the influence of rocker-sole shoes on postural stability in people with CLBP. The results were concordant with Hypothesis 1; that is, that the wearing of rocker-sole shoes provides a less stable surface to stand on than flat-sole shoes. However, the results do not support Hypothesis 2; there were no differences in barefoot CoP parameters within-groups or between-groups during barefoot trials at 6 weeks or 6 months, compared with baseline, for any standing condition. Furthermore, there were no changes from baseline in CoP parameters in the rocker-sole group when shod at 6 weeks and 6 months. These findings suggest that adaptation of the postural control system did not occur following long-term wear of rocker-sole shoes. Alternatively, the outcomes assessed were not appropriate to detect any potential training effect offered by the rocker-shoes.

Anteroposterior CoP parameters

The current study demonstrated similar barefoot baseline CoP parameters between shoe groups. When compared with the findings of other studies investigating CLBP with the same outcome measures under similar protocols, this study demonstrated increased postural stability during less challenging standing conditions,^{6 11 21} and reduced postural stability during more challenging standing conditions.^{11 21 22} These differences may be due to a number of methodological and demographic differences reported to influence outcome, namely: number of trials;¹⁰ trial durations;¹⁰ participant age;^{23–26}

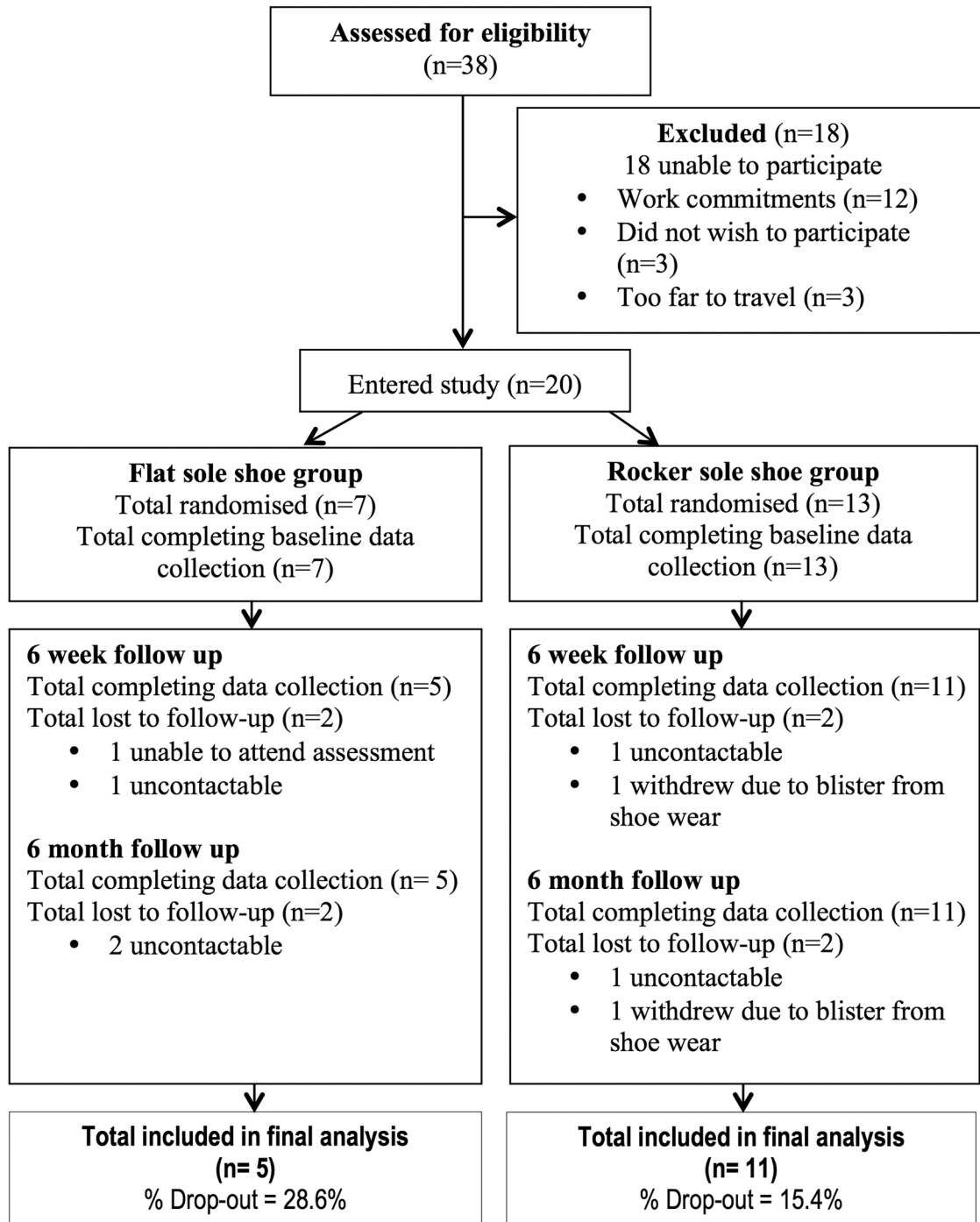


Figure 3 Flow of participants through trial.

Table 3 Sagittal plane centre of pressure parameters during barefoot and shod standing, with eyes open on firm surface

	Flat-sole shoe group (n=7)		Rocker-sole shoe group (n=13)	
	CoP _{RMSE AP} (mm)	CoP _{VEL AP} (mm/s)	CoP _{RMSE AP} (mm)	CoP _{VEL AP} (mm/s)
Barefoot	4.78 (2.26)	7.03 (2.00)	4.39 (1.84)	7.19 (1.13)
Shod	5.61 (2.33)	7.11 (1.27)	10.79 (3.01)	11.28 (1.93)
Difference between means	0.84 (2.03)	0.07 (1.20)	6.41 (2.97)*	4.10 (2.07)*

Summary measures represent means (SD) or percentages where indicated (%).

*Significant difference within groups between barefoot and shoe conditions ($p < 0.01$).

AP, anteroposterior; RMSE, root mean squared error; VEL, velocity.

Table 4 Change in barefoot centre of pressure parameters during standing, eyes closed on compliant surface at reassessment points

	Centre of pressure parameter	Assessment			p Value
		Baseline	6 weeks	6 months	
Flat-sole shoe group (n=5)	CoP _{RMSE AP} (mm)	10.80 (2.85)	10.70 (3.40)	9.29 (1.95)	0.21
	CoP _{VEL AP} (mm/s)	21.61 (3.48)	20.66 (4.82)	20.19 (5.85)	0.70
Rocker-sole shoe group (n=11)	CoP _{RMSE AP} (mm)	10.43 (2.85)	9.35 (2.62)	9.75 (3.08)	0.13
	CoP _{VEL AP} (mm/s)	17.85 (4.59)	15.28 (3.64)	15.77 (4.26)	0.09

Summary measures represent means (SD).

Table 5 Change over time in anteroposterior centre of pressure parameters during shod standing, eyes open on firm surface

	Centre of pressure parameter	Assessment			p Value
		Baseline	6 weeks	6 months	
Flat-sole shoe group (n=5)	CoP _{RMSE AP} (mm)	5.20 (1.52)	6.03 (2.95)	5.29 (2.22)	0.51
	CoP _{VEL AP} (mm/s)	7.28 (2.04)	6.22 (1.16)	6.29 (1.97)	0.56
Rocker-sole shoe group (n=11)	CoP _{RMSE AP} (mm)	10.17 (2.84)	9.54 (2.79)	11.07 (3.89)	0.28
	CoP _{VEL AP} (mm/s)	9.39 (2.24)	9.10 (3.25)	8.24 (1.81)	0.19

Summary measures represent means (SD).

body weight;^{27 28} body height^{27 28} and gender.²⁵ However, the consistent increase in CoP parameters from stable to more challenging standing conditions in the current study concurs with other studies.^{7 11}

A reduction in a CoP parameter is interpreted as an improvement in postural stability.¹⁰ It was hypothesised that due to the increased proprioceptive input from wearing rocker shoes,¹² a greater reduction in barefoot and shod postural excursion may occur at reassessment in the rocker-sole compared with the flat-sole group. However, neither group demonstrated a significant change in CoP parameters at any follow-up compared with baseline when barefoot or shod. This lack of change suggests that the rocker-sole footwear either (1) provided an additional postural challenge; however, the type of challenge did not result in long-term improvements in sensorimotor function, (2) provided an appropriate postural challenge but 'dosage' was insufficient for a training effect to occur or (3) influenced proprioceptive deficits; however, improvements were not detected.

The first explanation, suggesting that the increased postural challenge from rocker-sole shoes does not influence long-term improvements in sensorimotor function compared with wearing flat-sole shoes, concurs with the findings of other studies.^{29 30} Nigg *et al*²⁹ investigated the influence of rocker-sole footwear on balance in golfers with LBP and in people with knee osteoarthritis.³⁰ In support of the current study findings, Nigg *et al*²⁹ concluded that no differences in balance performance were detected between the intervention (rocker-sole group) or control group (normal shoes) at 6 and 12 weeks.²⁹ The current study adds to Nigg *et al*'s conclusions by demonstrating that longer term use of rocker-sole shoes (6 months) has no further influence on postural stability.

The second explanation suggests a greater postural challenge may have resulted in a measured training effect. When compared with standing barefoot, the rocker shoes demonstrated a 57–146% increase in the CoP parameters assessed. Introducing additional postural challenge in an attempt to increase the CoP parameters further may not only be unsafe or impractical in a CLBP population, but may also, in the absence of evidence to support a relationship between increased postural challenge and change in CoP parameters or clinical change, be inappropriate.

The third explanation suggests that the null hypothesis was incorrectly accepted and study conclusions are incorrect. This may have been due to an underpowered sample, poor reliability of the outcome variables or an insensitivity to detect genuine changes in postural control. The reliability of the outcome variables may be improved by increasing the duration and number of trials. However, of the numerous CoP parameters regularly reported in research assessing postural stability, the two parameters chosen in the current study have been reported as highly reliable.¹⁰

Although changes in CoP parameters have been suggested as appropriate outcome measures to detect clinical change,³¹ to the authors knowledge, measurements of the SE of CoP parameters, during challenging standing conditions, have yet to be reported in the literature for people with CLBP. The differences in postural instability outcomes during challenging standing conditions for both shoes types in the current study are less than the reported SEs of the same CoP parameters assessed in reliability studies investigating elderly participants (who also demonstrate poor postural stability).³² Changes in CoP parameters following an intervention

may be too small to reliably determine whether change in postural stability has occurred.

The clinical study investigating the effects of rocker-sole footwear on CLBP,¹⁸ from which the current participants were recruited, demonstrated clinically important statistically significant reductions in disability and pain (in rocker-sole and flat-sole shoe groups) at follow-up; however, the current study demonstrates no change in postural parameters. This study and the findings of Kuukkanen and Malkia³³ (who in the presence of improvement in function in patients with LBP, found no improvement in postural stability at 6 months following an exercise intervention) suggest that CoP parameters may be insensitive to real changes in postural control or that there may be no significant changes in control. If the latter, the use of any mechanical indices as outcome measures would be inappropriate; if the former, alternative mechanical outcome measures need to be developed and tested.

Limitations

A systematic review investigating acceptable reliability for CoP parameters in asymptomatic individuals, published subsequently to the start of the current study, recommended a minimum trial duration of 90 s—a greater duration than that applied in this clinical trial.³⁴ However, in the current study, prolonged standing may have aggravated symptoms, and negatively influenced attrition rates.

The authors recognise the small sample size of this study may have resulted in a type II error. Although the study sample is small (n=20), when compared with participants in the clinical study¹⁸ from which study participants were recruited (n=115), there were similar reductions in pain and disability at 6-week and 6-month follow-up (disability: rocker-sole group $F(2,106)=0.20$, $p=0.82$, $\eta^2=0.001$; flat-sole group, $F(1.53,73.4)=0.24$, $p=0.73$, $\eta^2=0.01$; pain: rocker-sole group, $F(1.70,90.10)=0.01$, $p=0.99$, $\eta^2 <0.01$; flat-sole group, $F(2,96)=1.04$, $p=0.36$, $\eta^2=0.02$), suggesting that this subgroup was a representative sample of a larger CLBP population, hence reducing the likelihood of a type II error.

It is unclear what effect either shoe type may have on CoP parameters in people with more severe CLBP, greater postural instability at baseline or if worn for >6 months.

Conclusions

This is the first randomised trial with long-term follow-up comparing the influence of rocker-sole and flat-sole shoes on standing CoP parameters in a CLBP population. Long-term use of rocker-sole or flat-sole shoes in addition to attendance to a 4-week exercise group does not appear to influence barefoot postural control, as determined by CoP parameters, during standing in people with CLBP.

Author affiliations

¹College of Health and Life Sciences, Brunel University, Uxbridge, UK

²Therapy Services, Chelsea and Westminster Hospital NHS Foundation Trust, London, UK

³Academic Department of Physiotherapy and Division of Health and Social Care Research, King's College London, London, UK

⁴Faculty of Health Sciences, University of Ljubljana, Ljubljana, Slovenia

⁵Guy's and St Thomas' NHS Foundation Trust, One Small Step Gait Laboratory, London, UK

⁶Biomedical Engineering, King's College London, London, UK

⁷Department of Allied Health Professions, University of Hertfordshire, Hatfield, UK

⁸Musculoskeletal Services, Central London Community Healthcare NHS Foundation Trust, London, UK

Twitter Follow Catharine MacRae at @Sian_MacRae

Acknowledgements The authors would like to thank all participants for their contributions to this study. The authors would also like to thank Tanya Forster, Andrew Lewis and Jonathan Noble for their assistance during the data collection and analysis process. The authors thank all physiotherapy departments who participated in this trial, namely: Balance Performance Physiotherapy, Clapham, London, UK, SW4; Chelsea and Westminster Hospital, Chelsea, London, UK, SW10; Queen Mary's Hospital, Roehampton, UK, SW14; and St George's Hospital, Tooting, UK SW18.

Contributors CSM was the primary investigator, involved in all aspects of the study, including methodology, data collection, analysis and interpretation of data, and was the primary author of the article. All authors contributed to methodology, data interpretation, and editing of the manuscript for publication. All authors approved the final revision of the submitted manuscript. In addition, JSL received grant funding for the study, AS contributed to data collection.

Funding The clinical study from which participants in the current study were recruited was funded by a Masai GB Limited project grant.

Disclaimer The corresponding author had full access to all data in the study and had final responsibility for the decision to submit for publication.

Patient consent Obtained.

Ethics approval Outer North London Research Ethics Committee.

Provenance and peer review Not commissioned; externally peer reviewed.

Open Access This is an Open Access article distributed in accordance with the terms of the Creative Commons Attribution (CC BY 4.0) license, which permits others to distribute, remix, adapt and build upon this work, for commercial use, provided the original work is properly cited. See: <http://creativecommons.org/licenses/by/4.0/>

REFERENCES

1. Moseley G, Hodges P. Are the changes in postural control associated with low back pain caused by pain interference? *Clin J Pain* 2005;21:323–9.
2. Luoto S, Taimela S, Hurri H, *et al.* Psychomotor speed and postural control in chronic low back pain patients: a controlled follow-up study. *Spine* 1996;21:2621–7.
3. Byl N, Sinnott P. Variations in balance and body sway in middle-aged adults: subjects with healthy backs compared with subjects with low-back dysfunction. *Spine* 1991;16:325–30.
4. Mientges M, Frank J. Balance in chronic low back pain patients compared to healthy people under various conditions in upright standing. *Clin Biomech* 1999;14:710–16.
5. Takala E, Korhonen I, Viikari-Juntura E. Postural sway and stepping response among working population: reproducibility, long-term stability, and associations with symptoms of the low back. *Clin Biomech* 1997;12:429–37.
6. Della Volpe R, Popa T, Ginanneschi F, *et al.* Changes in co-ordination of postural control during dynamic stance in chronic low back pain patients. *Gait Posture* 2006;24:349–55.
7. Mok N, Brauer S, Hodges P. Hip strategy for balance control in quiet standing is reduced in people with low back pain. *Spine* 2004;29:E107–12.
8. Mann L, Kleinpaul J, Pereira Moro A, *et al.* Effect of low back pain on postural stability in younger women: influence of visual deprivation. *J Bodyw Mov Ther* 2010;14:361–6.
9. Yahia A, Jribi S, Ghroubi S, *et al.* Evaluation of the posture and muscular strength of the trunk and inferior members of patients with chronic lumbar pain. *Joint Bone Spine* 2011;78:291–7.



10. Ruhe A, Fejer R, Walker B. Center of pressure excursion as a measure of balance performance in patients with non-specific low back pain compared to healthy controls: a systematic review of the literature. *Euro Spine J* 2011;20:358–68.
11. Brumagne S, Janssens L, Knapen S, *et al.* Persons with recurrent low back pain exhibit a rigid postural control strategy. *Euro Spine J* 2008;17:1177–84.
12. Nigg B, Hintzen S, Ferber R. Effect of an unstable shoe construct on lower extremity gait characteristics. *Clin Biomech* 2006;21:82–8.
13. Buchecker M, Pfusterschmied J, Moser S, *et al.* The effect of different Masai Barefoot Technology (MBT) shoe models on postural balance, lower limb muscle activity and instability assessment. *Footwear Sci* 2012;4:93–100.
14. Nigg B, Federolf PA, von Tschamer V, *et al.* Unstable shoes: functional concepts and scientific evidence. *Footwear Sci* 2012;4:73–82.
15. Tropp H, Askling C. Effects of ankle disc training on muscular strength and postural control. *Clin Biomech* 1988;3:88–91.
16. Fitzgerald G, Axe M, Snyder-Mackler L. The efficacy of perturbation training in nonoperative anterior cruciate ligament rehabilitation programs for physically active individuals. *Phys Ther* 2000;80:128–40.
17. Johanssen F, Remvig L, Kryger P, *et al.* Exercise for chronic lower back pain: a clinical trial. *J Orthop Sports Phys Ther* 1995;22:52–9.
18. MacRae CS, Lewis J, Shortland A, *et al.* Effectiveness of rocker sole shoes in the management of chronic low back pain: a randomised clinical trial. *Spine* 2013;38:1905–12.
19. Ivanenko Y, Grasso R, Lacquaniti F. Effect of gaze on postural responses to neck proprioceptive and vestibular stimulation in humans. *J Physiol (Lond)* 1999;519:301–14.
20. Salavati M, Hadian M, Mazaheri M, *et al.* Test-retest reliability of center of pressure measures of postural stability during quiet standing in a group with musculoskeletal disorders consisting of low back pain, anterior cruciate ligament injury and functional ankle instability. *Gait Posture* 2009;29:460–4.
21. Brumagne S, Cordo P, Verschueren S. Proprioceptive weighting changes in persons with low back pain and elderly persons during upright standing. *Neurosci Lett* 2004;366:63–6.
22. Lafond D, Champagne A, Descarreaux M, *et al.* Postural control during prolonged standing in persons with chronic low back pain. *Gait Posture* 2009;29:421–7.
23. Era P, Heikkinen E. Postural sway during standing and unexpected disturbance of balance in random samples of men of different ages. *J Gerontol* 1985;40:287–95.
24. Doyle T, Dugan E, Humphries B, *et al.* Discriminating between elderly and young using a fractal dimension analysis of centre of pressure. *Int J Med Sci* 2004;1:11–20.
25. Hageman P, Leibowitz J, Blanke D. Age and gender effects on postural control measures. *Arch Phys Med Rehab* 1995;76:961–5.
26. Hasselkus B, Shambes G. Aging and postural sway in women. *J Gerontol* 1975;30:661–7.
27. Chiari L, Rocchi L, Cappello A. Stabilometric parameters are affected by anthropometry and foot placement. *Clin Biomech* 2002;17:666–77.
28. Hue O, Simoneau M, Marcotte J, *et al.* Body weight is a strong predictor of postural stability. *Gait Posture* 2007;26:32–8.
29. Nigg B, Davis E, Lindsay D, *et al.* The effectiveness of an unstable sandal on low back pain and golf performance. *Clin J Sport Med* 2009;19:464–70.
30. Nigg B, Emery C, Hiemstra L. Unstable shoe construction and reduction of pain in osteoarthritis patients. *Med Sci Sport Exer* 2006;38:1701–8.
31. Ruhe A, Fejer R, Walker B. Is there a relationship between pain intensity and postural sway in patients with non-specific low back pain? *BMC Musculoskel Dis* 2011;12:162.
32. Salehi R, Ebrahimi-Takamjani I, Esteki A, *et al.* Test-retest reliability and minimal detectable change for center of pressure measures of postural stability in elderly subjects. *Med J Islam Repub Iran* 2010;23:224–32.
33. Kuukkanen T, Malkia E. An experimental controlled study on postural sway and therapeutic exercise in subjects with low back pain. *Clin Rehab* 2000;14:192–202.
34. Ruhe A, Fejer R, Walker B. The test-retest reliability of centre of pressure measures in bipedal static task conditions—a systematic review of the literature. *Gait Posture* 2010;32:436–45.



Do rocker-sole shoes influence postural stability in chronic low back pain? A randomised trial

C Sian MacRae, Duncan Critchley, Matthew Morrissey, Adam Shortland and Jeremy S Lewis

BMJ Open Sport Exerc Med 2016 2:
doi: 10.1136/bmjsem-2016-000170

Updated information and services can be found at:
<http://bmjopensem.bmj.com/content/2/1/e000170>

These include:

References

This article cites 34 articles, 3 of which you can access for free at:
<http://bmjopensem.bmj.com/content/2/1/e000170#BIBL>

Open Access

This is an Open Access article distributed in accordance with the terms of the Creative Commons Attribution (CC BY 4.0) license, which permits others to distribute, remix, adapt and build upon this work, for commercial use, provided the original work is properly cited. See:
<http://creativecommons.org/licenses/by/4.0/>

Email alerting service

Receive free email alerts when new articles cite this article. Sign up in the box at the top right corner of the online article.

Notes

To request permissions go to:
<http://group.bmj.com/group/rights-licensing/permissions>

To order reprints go to:
<http://journals.bmj.com/cgi/reprintform>

To subscribe to BMJ go to:
<http://group.bmj.com/subscribe/>