

Citation for published version:

Emily J. Robinson, et al, 'Risk-adjusted survival for adults following in-hospital cardiac arrest by day of week and time of day: observational cohort study', *BMJ Quality & Safety*, Vol. 25 (11): 832-841, October 2016.

DOI:

<https://doi.org/10.1136/bmjqs-2015-004223>

Document Version:

This is the Published version.

Copyright and Reuse:

This is an Open Access article distributed in accordance with the Creative Commons Attribution Non Commercial (CC BY-NC 4.0) license, which permits others to distribute, remix, adapt, build upon this work non-commercially, and license their derivative works on different terms, provided the original work is properly cited and the use is non-commercial. See: <http://creativecommons.org/licenses/by-nc/4.0/>

Enquiries

If you believe this document infringes copyright, please contact the Research & Scholarly Communications Team at rsc@herts.ac.uk



OPEN ACCESS

Risk-adjusted survival for adults following in-hospital cardiac arrest by day of week and time of day: observational cohort study

Emily J Robinson,¹ Gary B Smith,² Geraldine S Power,¹ David A Harrison,¹ Jerry Nolan,³ Jasmeet Soar,⁴ Ken Spearpoint,⁵ Carl Gwinnutt,⁶ Kathryn M Rowan¹

► Additional material is published online only. To view please visit the journal online (<http://dx.doi.org/10.1136/bmjqs-2015-004223>).

For numbered affiliations see end of article.

Correspondence to

Professor Gary B Smith, Faculty of Health and Social Sciences, University of Bournemouth, Royal London House, Christchurch Road, Bournemouth BH1 3LT, UK; gbsresearch@virginmedia.com

Received 21 March 2015
Revised 27 October 2015
Accepted 9 November 2015
Published Online First
11 December 2015

ABSTRACT

Background Internationally, hospital survival is lower for patients admitted at weekends and at night. Data from the UK National Cardiac Arrest Audit (NCAA) indicate that crude hospital survival was worse after in-hospital cardiac arrest (IHCA) at night versus day, and at weekends versus weekdays, despite similar frequency of events.

Objective To describe IHCA demographics during three day/time periods—weekday daytime (Monday to Friday, 08:00 to 19:59), weekend daytime (Saturday and Sunday, 08:00 to 19:59) and night-time (Monday to Sunday, 20:00 to 07:59)—and to compare the associated rates of return of spontaneous circulation (ROSC) for >20 min (ROSC>20 min) and survival to hospital discharge, adjusted for risk using previously developed NCAA risk models. To consider whether any observed difference could be attributed to differences in the case mix of patients resident in hospital and/or the administered care.

Methods We performed a prospectively defined analysis of NCAA data from 27 700 patients aged ≥16 years receiving chest compressions and/or defibrillation and attended by a hospital-based resuscitation team in response to a resuscitation (2222) call in 146 UK acute hospitals.

Results Risk-adjusted outcomes (OR (95% CI)) were worse ($p<0.001$) for both weekend daytime (ROSC>20 min 0.88 (0.81 to 0.95); hospital survival 0.72 (0.64 to 0.80)), and night-time (ROSC>20 min 0.72 (0.68 to 0.76); hospital survival 0.58 (0.54 to 0.63)) compared with weekday daytime. The effects were stronger for non-shockable than shockable rhythms, but there was no significant interaction between day/time of arrest and age, or day/time of arrest and

arrest location. While many daytime IHCA involved procedures, restricting the analyses to IHCA in medical admissions with an arrest location of ward produced results that are broadly in line with the primary analyses.

Conclusions IHCA attended by the hospital-based resuscitation team during nights and weekends have substantially worse outcomes than during weekday daytimes. Organisational or care differences at night and weekends, rather than patient case mix, appear to be responsible.

BACKGROUND

Internationally, hospital survival is lower for patients admitted at weekends and at night.^{1–8} The effect exists for a range of diagnoses, including several cardiological conditions.^{1 2 4 7 8} Concha *et al*⁴ found that for patients admitted at weekends with cardiac arrest and arrhythmia the majority of excess deaths occurred within the first 24 h after admission, suggesting that the different survival between weekday and weekend admissions is most likely due to variations in care.

While many studies consider night/weekend effects in relation to day of hospital admission, there is less data for events occurring in hospital.^{9 10} A few, generally small, single-centre studies from outside the UK have reported reduced survival for in-hospital cardiac arrests (IHCA) occurring outside weekday hours.^{11–16} Recent analysis of UK National Cardiac Arrest Audit (NCAA) data demonstrated reduced crude hospital survival after IHCA at night versus day, and at weekends versus weekdays, despite a similar frequency of events.¹⁷ In the USA, risk-adjusted outcomes from the



► <http://dx.doi.org/10.1136/bmjqs-2015-005037>



CrossMark

To cite: Robinson EJ, Smith GB, Power GS, *et al*. *BMJ Qual Saf* 2016;**25**:832–841.

American Heart Association's (AHA) 'Get With The Guidelines—Resuscitation' (GWTG-R) registry of IHCA indicate that hospital survival was substantially lower at nights and weekends compared with weekday daytimes.¹⁸ However, extrapolating results from the US to UK practice may not be justified, as a high proportion of patients (up to 85%) in the GWTG-R registry had a monitored IHCA (up to 59% in an intensive care unit (ICU))^{18 19} and the UK has fewer ICU beds.²⁰

As it is not known if risk-adjusted outcomes for IHCA occurring at weekends and at night in UK acute hospitals are worse than for those occurring during weekday daytime, we investigated this using the NCAA database and the NCAA risk models for IHCA outcomes.²¹ We also attempted to discover if any observed difference was attributable to the case mix of patients resident in hospital or to care delivery.

METHODS

UK National Cardiac Arrest Audit

NCAA is the UK national clinical audit for patients, aged >28 days, who receive cardiopulmonary resuscitation (CPR) following an IHCA attended by a hospital-based resuscitation team (or equivalent) in response to a 2222 call (2222 is the emergency telephone number used to summon a resuscitation team in UK National Health Service (NHS) hospitals). NCAA defines CPR as the receipt of chest compressions and/or defibrillation. NCAA has approval from the Confidentiality Advisory Group within the Health Research Authority to hold patient identifiable data under Section 251 of the NHS Act 2006 (approval number: ECC 2-06(n)/2009). At the time of the study, 163 hospitals in England, Wales, Scotland and Northern Ireland participated in NCAA, with coverage in England representing >78% of adult, acute hospitals.

NCAA database

Standardised data are collected, both at the time of the IHCA and from medical records, according to strict rules and definitions (these have been reported previously¹⁷). NCAA data are entered onto a dedicated, secure, online data entry system by relevant staff at participating hospitals. Data are validated both locally (at the point of data entry) and centrally for completeness, illogicalities and inconsistencies. For consistency, day and time of 2222 call are, hereafter, termed day and time of IHCA.

Inclusion and exclusion criteria

Validated data for the period 1 April 2011 to 30 September 2013 were selected for analysis. All IHCA for adult patients (aged ≥16 years) were included. The following were excluded: IHCA data from specialist, non-acute or paediatric hospitals; prehospital cardiac arrests (included in the NCAA if the resuscitation

team is called to the emergency department to continue the resuscitation attempt); patients missing important data for date/time of IHCA, age, risk factors and outcome; and any subsequent IHCA in a given hospital stay for the same patient. We also excluded IHCA where the patient had a Do Not Attempt Cardio-Pulmonary Resuscitation (DNACPR) decision in place before the arrest as this is an explicit exclusion from the NCAA risk models used to 'risk adjust' the outcomes studied (see below).

Data

The following data were extracted for all included IHCA: age, sex, prior hospital length of stay, reason for admission to/attendance at hospital, location of IHCA, presenting/first documented rhythm, return of spontaneous circulation (ROSC) for >20 min (ROSC>20 min), survival to hospital discharge and reason resuscitation was stopped.

Prior hospital length of stay was defined as the number of days between hospital admission and the date of the IHCA and was categorised as 0, 1, 2–7 and ≥8 days. Presenting/first documented rhythm was characterised as one of ventricular fibrillation (VF), pulseless ventricular tachycardia (pVT), shockable unknown rhythm, asystole, pulseless electrical activity (PEA), bradycardia, non-shockable unknown rhythm or unknown or undetermined rhythm. ROSC>20 min and survival to hospital discharge were the primary outcomes. Locations were grouped as follows:

- ▶ ward, obstetric unit or intermediate care setting
- ▶ emergency department
- ▶ emergency admissions unit
- ▶ operating theatre and theatre recovery
- ▶ cardiac catheterisation laboratory
- ▶ imaging department or specialist treatment area
- ▶ critical care unit (ie, intensive care or high dependency unit)
- ▶ clinic or non-clinical area.

Categorisation of day and time of IHCA

Day and time of IHCA were categorised as:

1. weekday daytime (Monday to Friday, 08:00 to 19:59)
2. weekend daytime (Saturday and Sunday, 08:00 to 19:59)
3. night-time (Monday to Sunday, 20:00 to 07:59).

These periods were chosen a priori, based on definitions used in a previous NCAA publication.⁸

Statistical analyses

Descriptive statistics

We made an a priori decision to calculate IHCA rate per 1000 hospital admissions (pooled across all hospitals) per 12 h, based upon definitions from a previous NCAA publication.¹⁷ Case mix and outcomes were described for each of the three day/time periods: weekday daytime, weekend daytime and night-time. Predicted probabilities for the two primary outcomes,

ROSC > 20 min and survival to hospital discharge, were calculated. Categorical data were summarised as number and percentage, continuous data as mean (SD) or median (IQR), as appropriate.

Logistic regression analysis

An unadjusted logistic regression model was run to estimate the association between the three day/time periods and each of the two primary outcomes. The association was reported as the OR for each outcome for weekend daytime and for night-time compared with weekday daytime as the baseline category. These associations were then reassessed after adjustment for the risk factors included in the NCAA risk prediction models,²¹ that is, age, sex (in the ROSC > 20 min model only), prior hospital length of stay, reason for admission to/attendance at hospital, location of IHCA and presenting/first documented rhythm. Information about the categorisation of the included variables is provided in an earlier NCAA publication²¹ and in online supplementary files 1 and 2. The development set for the NCAA models contained 14 688 patients with an IHCA, of which 6605 (45.0%) achieved ROSC > 20 min and 2926 (19.9%) survived to hospital discharge.²¹ Predicted probabilities for ROSC > 20 min and survival to hospital discharge were calculated for each arrest. A hospital-level random effect was included in the models to adjust for clustering of outcomes at the hospital level.

Wald tests were used to test the global and pairwise comparisons between the day/time periods for any difference in crude and risk-adjusted outcomes. To assess whether the association between day/time periods and outcomes varied across specific subgroups, interactions between day/time period and the following covariates were tested: age group (16–64, 65–74, 75–84, 85+); presenting/first documented rhythm (shockable rhythm, asystole, PEA, other non-shockable or unknown rhythm) and location of IHCA. The prospective decision to investigate these covariates was based on the view of the NCAA Steering Group that these could be clinically important.

A statistical analysis plan was agreed a priori. The analyses were performed using Stata/SE V13.0 (StataCorp LP, Texas, USA).

RESULTS

During the period 1 April 2011 to 30 September 2013, a total of 36 292 IHCA from 159 hospitals were recorded in the NCAA database. After applying the study's inclusion and exclusion criteria (figure 1), 27 700 IHCA in 146 acute hospitals were included in the analysis. Only 105 IHCA (0.38% of the eligible data set) were excluded because of missing data.

The distribution of day/time of IHCA throughout the week is shown in figure 2. IHCA were distributed equally between night-time (13 758, 49.7%) and daytime (13 942, 50.3%), with 36.5% occurring

during weekday daytime and 13.8% during weekend daytime (table 1). The mean rate of IHCA per 1000 hospital admissions per 12 h was similar for the selected day/time periods. Demographics and case mix, by day/time of IHCA, are presented in table 1. Mean age, the proportion of males and the reason for admission to/attendance at hospital for patients having an IHCA were similar for day/time period. Across all day/time periods, approximately 80% of IHCA occurred in medical patients and >50% of IHCA occurred on general hospital wards (table 1). Presenting rhythm was shockable (VF/pVT) in 15.4% and non-shockable (asystole, PEA, bradycardia) in 74.9% of arrests (table 1). Shockable rhythms were less common at night-time than during the daytime, whereas non-shockable rhythms were more common at night-time (table 1).

Distributions for the predicted probability of ROSC > 20 min and for hospital survival, estimated from the NCAA risk prediction models, were similar across the day/time periods (table 1). However, crude survival for both outcomes was significantly lower ($p < 0.001$) at night-time and weekend daytime compared with weekday daytime (figure 3A). After risk adjustment, both ROSC > 20 min and hospital survival remained significantly worse ($p < 0.001$) for both weekend daytime and for night-time compared with weekday daytime (figure 3B).

To ensure that our findings were not biased by (a) the influence of patients undergoing procedures (who generally have a greater chance of surviving an IHCA) being more likely to be present in hospital during the weekday daytime or (b) our daytime definition of 08:00 to 19:59, post hoc we performed additional separate analyses (i) restricted to medical admissions with a location of arrest on a ward and (ii) using a different daytime definition of 08:00–16:29. Restricting the data set produced results that are broadly in line with the primary analyses, except that the effect of weekend daytime versus weekday daytime disappeared for ROSC > 20 min (but remained for hospital survival) (see online supplementary file 3).

There was no significant interaction between day/time of IHCA and patient age ($p = 0.07$ for ROSC > 20 min, $p = 0.21$ for hospital survival) or between day/time and location of IHCA ($p = 0.08$ for ROSC > 20 min, $p = 0.23$ for hospital survival). The effect of night and weekend was stronger for non-shockable than for shockable rhythms ($p < 0.001$) (figure 4).

DISCUSSION

Primary findings

In NHS hospitals participating in the NCAA, rates of ROSC > 20 min and survival to hospital discharge following IHCA were significantly worse for both night-time and weekend daytime compared with weekday daytime, even after risk adjustment. Additional

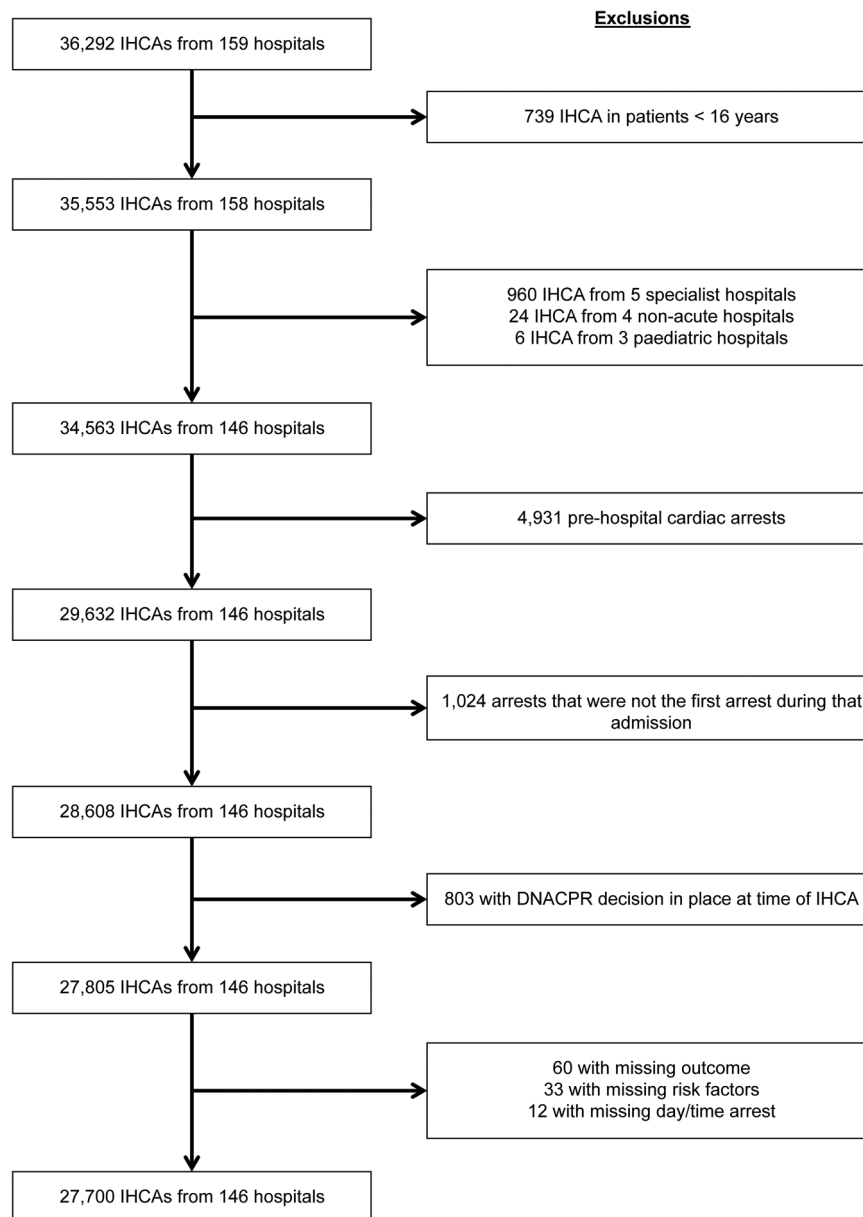


Figure 1 STROBE diagram for the study. IHCA, in-hospital cardiac arrest.

sensitivity analyses restricted to medical admissions and using an alternative definition for daytime both show that the magnitude of the weekend/night-time effect remains essentially unchanged. Importantly, procedure-related arrests do not have a major effect on the better outcomes seen during weekday daytime IHCA. Overall, patients who have an arrest at night and weekend daytime have virtually half the chance of surviving to hospital discharge than those arresting at weekday daytime.

Strengths/weaknesses of the study

Major strengths of our study include a large representative sample of UK hospitals; clinical data collected to a high standard according to strict rules and definitions, validated locally and centrally; and a low level of missing data (<0.4% of the eligible data set). That

(a) mean rates of IHCA and (b) predicted probabilities for the two study outcomes were similar across the selected day/time periods are also important strengths. The first because it suggests that the number of IHCA followed by ROSC > 20 min and survival to hospital discharge should be similar across time periods, and that selection bias is less likely to affect the results. The second because it demonstrates that the case mix of patients having an IHCA across the three time periods was similar, and that residual confounding due to unmeasured patient factors is less likely to affect the results than if large differences existed in the observed patient characteristics.

A major weakness of our study is that neither the NCAA database nor the models include every case-mix factor that may be important for patient outcome following IHCA. Specifically, NCAA does not collect data

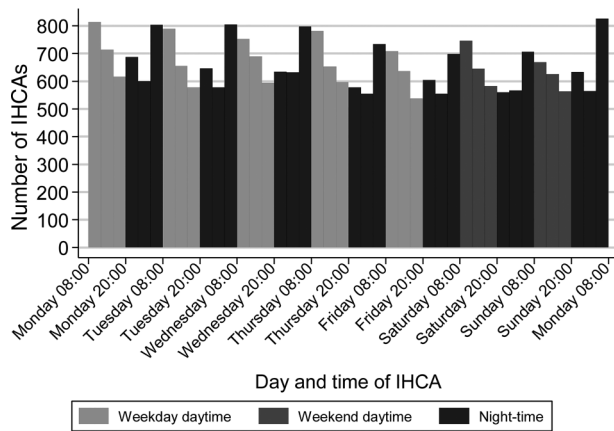


Figure 2 Distribution of day and time of in-hospital cardiac arrest (IHCA).

on patient comorbidities, which is a significant risk factor in the US model for post-IHCA outcomes.²² Equally, NCAA has no data on the diagnosis of patients having an IHCA, yet several researchers have demonstrated variation in excess mortality in patients admitted at weekends according to the patient's diagnostic group.^{1 2 4} The inclusion of age and prior length of stay in hospital in the NCAA models might counterbalance these weaknesses as older patients have more comorbidity and patients with comorbidities experience longer hospital stays.^{23 24} Both patient age and prior length of stay in hospital are similar between groups in our study (table 1). However, the lack of detailed case-mix data potentially reduces the significance of our findings. Another potential weakness is that the remit of the NCAA is to audit the outcomes of the resuscitation team (or equivalent) and, therefore, the database includes only IHCAs involving a 2222 call. Patients having an IHCA in a monitored area with specialist staff already present (eg, the ICU) may well be resuscitated without a 2222 call having been made or the hospital-based resuscitation team attending. Consequently, we are unable to compare outcomes where the patient received CPR following a 2222 call with those where no call was made.

Other adjusted studies of IHCA outcomes by day/night

Our results concur with those from other published adjusted analyses of outcomes by day and time of IHCA.^{11 18} In the large multicentre study published by the AHA GWTG-R registry,¹⁸ hospital survival following IHCA was lower during nights and weekends compared with day/evening on weekdays, even after adjustment for patient, arrest event and hospital factors. Similarly, data from a single Scandinavian centre also showed that, after adjustment for differences in age, history and factors at resuscitation, survival rate for patients having IHCAs during office hours was more than twice that of patients having an arrest during other times.¹¹ The similarity between

the NCAA and AHA findings is particularly interesting given that up to 85% of IHCAs in the AHA GWTG-R registry occurred in monitored areas of hospitals, up to 59% in an ICU.^{18 19} Approximately 9.0% of acute care hospital beds in the USA are adult ICU beds compared with 1.2% in the UK.²⁰

Comparison with other publications: reported rhythms by day/night

We found that non-shockable rhythms were more common at night-time than during the daytime (table 1); shockable rhythms had the opposite relationship. The weekend/night-time effect was also stronger for non-shockable than for shockable presenting rhythms (figure 4). In general, survival from shockable cardiac arrest rhythms is greater than for non-shockable rhythms^{17 18} and a shockable rhythm that is not treated within minutes may progress to a non-shockable rhythm. Therefore, the difference between the daytime and night-time incidence of shockable and non-shockable rhythms can have a biological causation or be due to an increased incidence of shockable rhythms progressing to non-shockable rhythms.

Many studies report that the presenting or first documented rhythm is more commonly shockable during the day, with those at night being more commonly non-shockable.^{11–14 17 18} In our study, IHCAs during night-time were generally less likely to be associated with ROSC > 20 min and survival to hospital discharge compared with weekday and weekend daytime. Swedish research reported better survival to hospital discharge for IHCA occurring from 08:00–16:30 compared with 16:30–08:00, regardless of the initial arrest rhythm.¹¹ Data from >4500 arrests at a single American hospital suggested that the observed survival difference between day and night was explained by circadian changes in initial rhythm.¹⁴ The authors reported that a significantly higher proportion of arrests had a presenting or first documented rhythm of asystole at night than during the day. In the UK, survival on general medical wards was worse for patients with a shockable rhythm occurring during late (15:30–21:00) and night shifts (21:00–17:30) compared with early shifts (07:30–15:30).¹⁵

Comparison with other publications: age and location

We found no significant interaction with age and location of arrest. Our findings on age are similar to other authors.^{14 18} Our findings on location differ from those reported by the AHA where survival from IHCA at night was lower for all locations except the emergency department.¹⁸ Location of IHCA can act as a proxy for the likelihood of a patient being monitored at the time of the IHCA or the likelihood of the IHCA being witnessed. In Sweden, on monitored wards, the crude rate of survival to hospital discharge

Table 1 Demographics and case mix by day/time of IHCA

	Weekday daytime	Weekend daytime	Night-time
Number of IHCAs, n (%)	10 113 (36.5)	3829 (13.8)	13 758 (49.7)
Rate per 1000 hospital admissions per 12 h, mean (CI)	0.135 (0.133 to 0.138)	0.127 (0.123 to 0.131)	0.131 (0.129 to 0.133)
Age mean (SD)	73.4 (14.2)	73.8 (14.3)	74.0 (14.4)
Sex males (%)	5724 (56.6)	2144 (56.0)	7943 (57.7)
Length of stay in hospital prior to IHCA, n (%) (N=27 693)			
0 days	3405 (33.7)	1181 (30.9)	2915 (21.2)
1 day	1531 (15.2)	553 (14.4)	2653 (19.3)
2–7 days	2919 (28.9)	1218 (31.8)	4813 (35.0)
≥8 days	2253 (22.3)	876 (22.9)	3376 (24.5)
Reason for admission to/attendance at/visit to hospital, n (%) (N=27 694)			
Medical	7993 (79.1)	3139 (82.0)	11 373 (82.7)
Trauma	372 (3.7)	158 (4.1)	529 (3.8)
Elective/scheduled surgery	696 (6.9)	201 (5.3)	692 (5.0)
Emergency/urgent surgery	737 (7.3)	300 (7.8)	1107 (8.1)
Obstetric	18 (0.2)	5 (0.1)	33 (0.2)
Outpatient	249 (2.5)	16 (0.4)	14 (0.1)
Staff/visitor	45 (0.4)	9 (0.2)	8 (0.1)
Location of IHCA n (%) (N=27 698)			
Ward, obstetrics or intermediate care	5355 (53.0)	2231 (58.3)	8746 (63.6)
Emergency department	1145 (11.3)	473 (12.4)	1224 (8.9)
Emergency admissions unit	850 (8.4)	306 (8.0)	1242 (9.0)
Theatre and recovery	228 (2.3)	47 (1.2)	85 (0.6)
Cardiac catheterisation laboratory	466 (4.6)	86 (2.2)	161 (1.2)
Imaging department or specialist treatment	519 (5.1)	90 (2.4)	121 (0.9)
ICU, ICU/HDU or HDU	463 (4.6)	218 (5.7)	891 (6.5)
Coronary care unit	918 (9.1)	366 (9.6)	1265 (9.2)
Clinic or non-clinical area	168 (1.7)	12 (0.3)	22 (0.2)
Presenting/first documented rhythm, n (%) (N=27 700)			
Shockable—VF	1322 (13.1)	420 (11.0)	1234 (9.0)
Shockable—pVT	536 (5.3)	192 (5.0)	557 (4.0)
Shockable—unknown	64 (0.6)	27 (0.7)	64 (0.5)
Non-shockable—asystole	1883 (18.6)	779 (20.3)	3959 (28.8)
Non-shockable—PEA	5264 (52.1)	2014 (52.6)	6729 (48.9)
Non-shockable—bradycardia	63 (0.6)	16 (0.4)	36 (0.3)
Non-shockable—unknown	214 (2.1)	83 (2.2)	285 (2.1)
Unknown	767 (7.6)	298 (7.8)	894 (6.5)
Predicted probabilities (%) from the NCAA risk models median (IQR) (N=27 689)			
ROSC>20 min	43 (34 to 62)	41 (33 to 59)	43 (28 to 55)
Hospital survival	13 (7 to 30)	12 (6 to 25)	10 (5 to 21)

HDU, high dependency unit; ICU, intensive care unit; IHCA, in-hospital cardiac arrest—day/time categorised by 2222 call; NCAA, National Cardiac Arrest Audit; PEA, pulseless electrical activity; pVT, pulseless ventricular tachycardia; ROSC>20 min, return of spontaneous circulation for >20 min; VF, ventricular fibrillation.

was 50% during office hours and 32% after office hours. Corresponding figures for unmonitored wards were 48% and 21%, respectively.¹¹ Others report that IHCAs at night are more likely to be unwitnessed^{12 14 16} and that unwitnessed arrests are associated with lower survival to hospital discharge.¹⁶ However, one group found no difference in ROSC>20 min or survival to hospital discharge for witnessed versus unwitnessed cases, either within or between night, morning or evening shifts.¹²

Possible causes of poorer IHCA outcomes at night and weekend

Our observation that IHCAs during night-time and weekend daytime have worse outcomes resonates with numerous reports of lower survival following weekend or out-of-hours hospital admission,^{1–8} even though the focus of our study is different. We did not consider day of hospital admission; rather, we studied IHCA outcomes at weekday daytime, weekend daytime and night-time. Patients in our study might

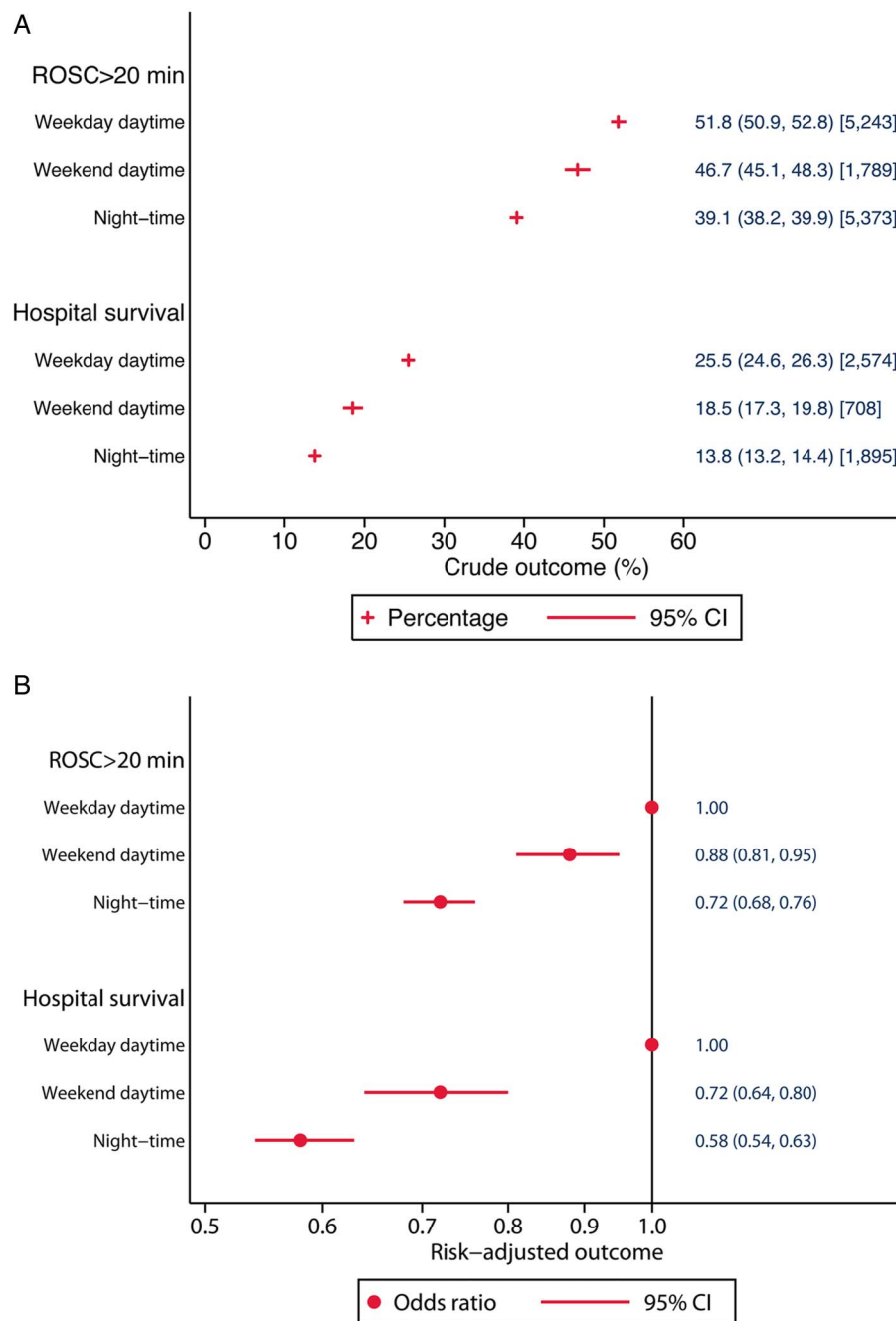


Figure 3 Crude (A) and risk-adjusted (B) outcomes by day and time of in-hospital cardiac arrest. ROSC, return of spontaneous circulation.

have been admitted on a weekday daytime, but have an IHCA during the weekend daytime or at nights; or be admitted at a weekend and arrest on a weekday daytime. In fact, >50% of patients in our study had been in hospital for ≥ 2 days before having an IHCA. Nevertheless, the question raised by all these studies is whether poorer outcomes are due to differences in patient case mix, administered care or a combination.

We found that IHCA were equally likely to occur at weekday daytime, weekend daytime and night-time, and that the measured patient characteristics were broadly similar between the time periods.

Acknowledging that we cannot rule out that differences in unmeasured patient characteristics may contribute, it seems logical to conclude that the differences in outcomes we observed are most likely to be due to care differences. This would seem to echo the work of Concha *et al*,⁴ who reported that patients admitted at weekends with cardiac arrest and arrhythmia have an ‘early risk’ pattern and suggested that their reduced survival is likely to be due to variations in care.

How might differences in care result in different IHCA outcomes? Intuitively, a lack of patient

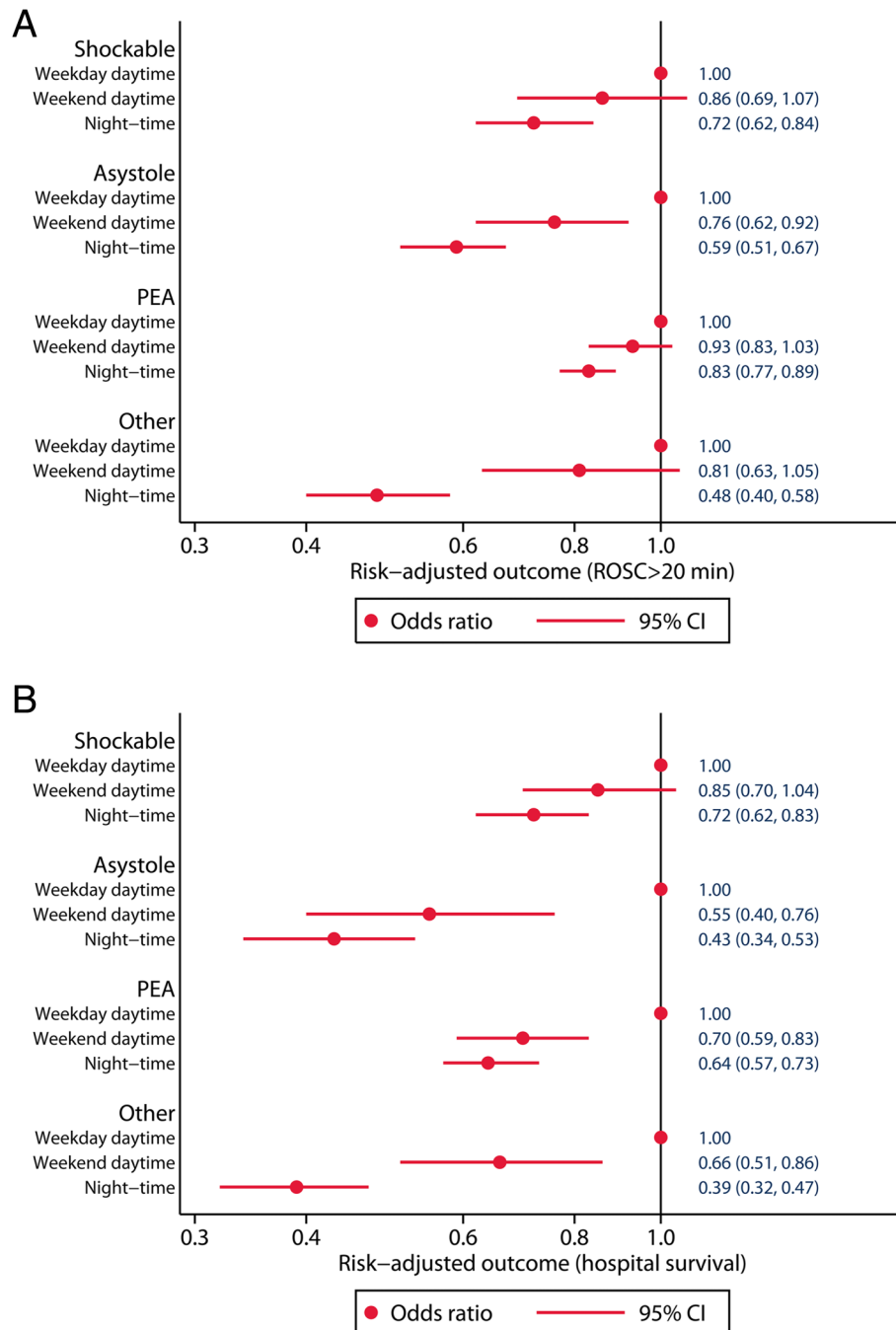


Figure 4 Risk-adjusted (A) return of spontaneous circulation (ROSC) > 20 min and (B) acute hospital survival by day and time of in-hospital cardiac arrest and presenting/first documented rhythm. PEA, pulseless electrical activity.

observation or monitoring will reduce opportunities to either prevent an IHCA or detect it early. That non-shockable rhythms are more common at night may reflect delayed detection (it is thought that asystole is a late occurrence in many IHCA and that some asystolic arrests would be shockable if detected earlier). Data from one study show that vital sign monitoring has a diurnal pattern on all 7 days of the week, with less monitoring at night;²⁵ the peak incidence of IHCA in the current and other studies seems also to occur at night.²⁶ In our study, most IHCA

occurred on the general ward. In the NHS, the use of continuous monitoring technologies is rare in these areas and most patient monitoring relies upon staff presence.

Fewer nurses at night could also delay the recognition of cardiac arrest, the commencement of life support and the placing of a 2222 call, resulting in poorer outcomes. A recent review reported "...inadequate numbers of nursing staff in a number of ward areas, particularly out of hours—at night and at the weekend..." in some NHS hospitals.²⁷ However, the

UK National Institute for Health and Care Excellence recently reported a lack of high-quality UK studies exploring and quantifying the relationship between nurse staffing levels and skill mix, and outcomes.²⁸ Nevertheless, a US study showed that a higher proportion of hours of care provided by registered nurses—a surrogate for the extent of patient observation and care delivery—is associated with lower IHCA rates.²⁹ While reduced ward lighting could contribute to delayed detection at night, it would not account for reduced survival at weekend daytime.

The response to a cardiac arrest call might also be slow at night on any day of the week, although evidence about the impact of differing response times through the day is variable.^{11 15 30} In the case of medical staff, there is also often a paucity of experienced senior staff immediately available on site, which may influence decision-making before, during, and if successful after, a cardiac arrest.

Any variation in the quality of CPR during the 24 h period might also explain our findings, although supportive data are sparse. One study suggests that CPR quality is worse at night,³¹ resulting in lower chest compression rates and a significantly larger compression rate variance. Other authors reported that CPR performance and immediate IHCA survival rates at night and during the day were similar.³² The quality of postresuscitation care might also vary between day and night; however, the only study exploring this relationship reported no difference in the postresuscitation care provided to survivors of out-of-hospital cardiac arrest.³³

Future research

Future research should explore the relationship between staffing (ie, nurse, doctor and allied health practitioner) levels on hospital wards, patient observation and monitoring, and patient outcomes following IHCA. The increasing use of non-invasive, continuous monitoring technologies in the NHS provides opportunities to investigate issues of monitoring further. Future research should also consider the role of other factors that may vary diurnally and that could therefore explain the different survival on weekdays and weekends, and at nights, for example, the composition of the resuscitation team and its access to senior decision makers; the time taken for a functional resuscitation team to assemble and become a cohesive, focused unit; staff tiredness; CPR and other task performance; the situational awareness of staff; and the resuscitation team response times.

CONCLUSIONS

In conclusion, IHCAs attended by the hospital-based resuscitation team during nights and weekends have substantially worse outcomes than during weekday daytimes. These effects remain significant after risk

adjustment and are stronger for non-shockable than shockable rhythms. The precise cause of the observed differences in outcomes cannot be determined by our study as we cannot definitively rule out the effect of unmeasured patient characteristics. However, on the basis of the results obtained, it seems logical to conclude that the worse outcomes at night and weekend daytime are most likely due to organisational or care differences.

Author affiliations

¹Intensive Care National Audit & Research Centre, London, UK

²Faculty of Health and Social Sciences, University of Bournemouth, Bournemouth, UK

³Department of Anaesthesia and Intensive Care Medicine, Royal United Hospital, Bath, UK

⁴Department of Anaesthesia and Intensive Care Medicine, Southmead Hospital, Bristol, UK

⁵Resuscitation Department, Imperial College Healthcare NHS Trust, London, UK

⁶Resuscitation Council (UK), London, UK

Correction notice This article has been corrected since it was published Online First. The third author's name has been corrected.

Collaborators The National Cardiac Arrest Audit.

Contributors All authors contributed to the study design. Data were collected and cleaned as part of the UK National Cardiac Arrest Audit (NCAA). EJR, GSP and DAH analysed the data and produced the figures and table. All authors contributed to the interpretation of the results and drafting of the manuscript. All authors approved the final version of the manuscript.

Funding This project was supported by internal funding from the Resuscitation Council (UK) and the Intensive Care National Audit & Research Centre.

Competing interests None declared.

Provenance and peer review Not commissioned; externally peer reviewed.

Open Access This is an Open Access article distributed in accordance with the Creative Commons Attribution Non Commercial (CC BY-NC 4.0) license, which permits others to distribute, remix, adapt, build upon this work non-commercially, and license their derivative works on different terms, provided the original work is properly cited and the use is non-commercial. See: <http://creativecommons.org/licenses/by-nc/4.0/>

REFERENCES

- 1 Bell CM, Redelmeier DA. Mortality among patients admitted to hospitals on weekends as compared with weekdays. *N Engl J Med* 2001;345:663–8.
- 2 Aylin P, Yunus A, Bottle A, *et al.* Weekend mortality for emergency admissions. A large multicentre study. *Qual Saf Health Care* 2009;19:213–17.
- 3 Ruiz M, Bottle A, Aylin PP. The Global Comparators Project: international comparison of 30-day in-hospital mortality by day of the week. *BMJ Qual Saf* 2015;24:492–504.
- 4 Concha OJ, Gallego B, Hillman K, *et al.* Do variations in hospital mortality patterns after weekend admission reflect reduced quality of care or different patient cohorts? A population-based study. *BMJ Qual Saf* 2014;23:215–22.
- 5 Barba R, Losa JE, Velasco M, *et al.* Mortality among adult patients admitted to the hospital on weekends. *Eur J Intern Med* 2006;17:322–4.

- 6 Coiera E, Wang Y, Magrabi F, *et al.* Predicting the cumulative risk of death during hospitalization by modeling weekend, weekday and diurnal mortality risks. *BMC Health Serv Res* 2014;14:226.
- 7 Kostis WJ, Demissie K, Marcella SW, *et al.* Weekend versus weekday admission and mortality from myocardial infarction. *N Engl J Med* 2007;356:1099–109.
- 8 Jneid H, Fonarow GC, Cannon CP, *et al.* Impact of time of presentation on the care and outcomes of acute myocardial infarction. *Circulation* 2008;117:2502–9.
- 9 Aylin P, Alexandrescu R, Jen MH, *et al.* Day of week of procedure and 30 day mortality for elective surgery: retrospective analysis of hospital episode statistics. *BMJ* 2013;346:f2424
- 10 Goldfrad C, Rowan K. Consequences of discharges from intensive care at night. *Lancet* 2000;355:1138–42.
- 11 Herlitz J, Bang A, Alsen B, *et al.* Characteristics and outcome among patients suffering from in hospital cardiac arrest in relation to whether the arrest took place during office hours. *Resuscitation* 2002;53:127–33.
- 12 Matot I, Shleifer A, Hersch M, *et al.* In-hospital cardiac arrest: is outcome related to the time of arrest? *Resuscitation* 2006;71:56–64.
- 13 Brindley PG, Markland DM, Mayers I, *et al.* Predictors of survival following in-hospital adult cardiopulmonary resuscitation. *CMAJ* 2002;167:343–8.
- 14 Jones-Crawford JL, Parish DC, Smith BE, *et al.* Resuscitation in the hospital: circadian variation of cardiopulmonary arrest. *Am J Med* 2007;120:158–64.
- 15 Wright D, Bannister J, Mackintosh AF. Automatic recording and timing of defibrillation on general wards by day and night. *Eur Heart J* 1994;15:631–6.
- 16 Dumot JA, Burval DJ, Sprung J, *et al.* Outcome of adult cardiopulmonary resuscitations at a tertiary referral center including results of “limited” resuscitations. *Arch Intern Med* 2001;161:1751–8.
- 17 Nolan JP, Soar J, Smith GB, *et al.* Incidence and outcome of in-hospital cardiac arrest in the United Kingdom National Cardiac Arrest Audit. *Resuscitation* 2014;85:987–92.
- 18 Peberdy MA, Ornato JP, Larkin GL, *et al.* Survival from in-hospital cardiac arrest during nights and weekends. *JAMA* 2008;299:785–92.
- 19 Girotra S, Nallamothu BK, Spertus JA, *et al.* Trends in survival after in-hospital cardiac arrest. *N Engl J Med* 2012;367:1912–20.
- 20 Wunsch H, Angus DC, Harrison DA, *et al.* Variation in critical care services across North America and Western Europe. *Crit Care Med* 2008;36:2787–93.
- 21 Harrison DA, Patel K, Nixon E, *et al.* Development and validation of risk models to predict outcomes following in-hospital cardiac arrest attended by a hospital-based resuscitation team. *Resuscitation* 2014;85:993–1000.
- 22 Chan PS, Berg RA, Spertus JA, *et al.* for the AHA GWTC-Resuscitation Investigators. Risk-standardizing survival for in-hospital cardiac arrest to facilitate hospital comparisons. *J Am Coll Cardiol* 2013;62:601–9.
- 23 Ornstein SM, Nietert PJ, Jenkins RG, *et al.* The prevalence of chronic diseases and multimorbidity in primary care practice: a PPRNet report. *J Am Board Fam Med* 2013;26:518–24.
- 24 Bergeron E, Lavole A, Moore L, *et al.* Comorbidity and age are both independent predictors of length of hospitalisation in trauma patients. *Can J Surg* 2005;48:361–6.
- 25 Hands C, Reid E, Meredith P, *et al.* Patterns in the recording of vital signs and early warning scores—time of day, day of week. *BMJ Qual Saf* 2013;22:719–26.
- 26 Jones D, Bellomo R, Bates S, *et al.* Patient monitoring and the timing of cardiac arrests and medical emergency team calls in a teaching hospital. *Intensive Care Med* 2006;32:1352–6.
- 27 Keogh B. *Review into the quality of care and treatment provided by 14 hospital trusts in England: overview report.* NHS England, 2013.
- 28 National Institute for Health and Clinical Excellence. *Safe staffing for nursing in adult inpatient wards in acute hospitals.* NICE Safe staffing guideline 1, London, 2014.
- 29 Needleman J, Buerhaus P, Pankratz VS, *et al.* Nurse staffing and inpatient hospital mortality. *N Engl J Med* 2011;364:1037–45.
- 30 Hajbaghery MA, Mousavi G, Akbari H. Factors influencing survival after in-hospital cardiopulmonary resuscitation. *Resuscitation* 2005;66:317–21.
- 31 Perman SM, Smith DA, Leary M, *et al.* CPR quality is more variable at night than during the day in a multicenter study of in-hospital cardiac arrest. *Circulation* 2010;122:A264.
- 32 Cooper S, Cade J. Predicting survival, in-hospital cardiac arrests: resuscitation survival variables and training effectiveness. *Resuscitation* 1997;35:17–22.
- 33 Uray T, Sterz F, Weiser C, *et al.* Quality of post arrest care does not differ by time of day at a specialized resuscitation center. *Medicine* 2015;94:e664.

Risk-adjusted survival for adults following in-hospital cardiac arrest by day of week and time of day: observational cohort study

Emily J Robinson, Gary B Smith, Geraldine S Power, David A Harrison, Jerry Nolan, Jasmeet Soar, Ken Spearpoint, Carl Gwinnutt and Kathryn M Rowan

BMJ Qual Saf 2016 25: 832-841 originally published online December 11, 2015

doi: 10.1136/bmjqs-2015-004223

Updated information and services can be found at:
<http://qualitysafety.bmj.com/content/25/11/832>

These include:

Supplementary Material

Supplementary material can be found at:

<http://qualitysafety.bmj.com/content/suppl/2015/12/11/bmjqs-2015-004223.DC1>

References

This article cites 31 articles, 8 of which you can access for free at:

<http://qualitysafety.bmj.com/content/25/11/832#ref-list-1>

Open Access

This is an Open Access article distributed in accordance with the Creative Commons Attribution Non Commercial (CC BY-NC 4.0) license, which permits others to distribute, remix, adapt, build upon this work non-commercially, and license their derivative works on different terms, provided the original work is properly cited and the use is non-commercial. See: <http://creativecommons.org/licenses/by-nc/4.0/>

Email alerting service

Receive free email alerts when new articles cite this article. Sign up in the box at the top right corner of the online article.

Topic Collections

Articles on similar topics can be found in the following collections

[BMJQS Noteworthy articles](#) (42)
[Editor's choice](#) (120)
[Open access](#) (294)

Notes

To request permissions go to:

<http://group.bmj.com/group/rights-licensing/permissions>

To order reprints go to:

<http://journals.bmj.com/cgi/reprintform>

To subscribe to BMJ go to:

<http://group.bmj.com/subscribe/>