

## Using serum CA125 to assess the activity of potential cytostatic agents in ovarian cancer

---

M. R. Hall<sup>1</sup>, A. Petruckevitch<sup>1</sup>, J. Pascoe<sup>1</sup>, M. Persic<sup>2</sup>, S. Tahir<sup>3</sup>, J. S. Morgan<sup>4</sup>, C. Gourley<sup>5</sup>, N. Stuart<sup>6</sup>, S. M. Crawford<sup>7</sup>, D. E. Kornbrot<sup>8</sup>, Qian W<sup>9</sup> and G. J. Rustin<sup>1</sup>

Mount Vernon Cancer Centre<sup>1</sup>, Northwood, United Kingdom; Derby Hospitals NHS Foundation Trust<sup>2</sup> Derby, United Kingdom; Mid Essex Hospital Service NHS Trust<sup>3</sup>, Chelmsford, United Kingdom; Ipswich Hospital NHS Trust<sup>4</sup>, Ipswich, United Kingdom; University of Edinburgh Cancer Research UK Centre<sup>5</sup>, MRC IGMM, Western General Hospital, Edinburgh, United Kingdom; Ysbyty Gwynedd<sup>6</sup>, Bangor, United Kingdom; Airedale General Hospital<sup>7</sup>, Keighley, West Yorkshire, United Kingdom; University of Hertfordshire<sup>8</sup>, Hatfield, United Kingdom; Cambridge Cancer Trials Centre<sup>9</sup>, Addenbrookes Hospital, Cambridge, United Kingdom.

**Corresponding author** Dr Marcia Hall  
**Address** Mount Vernon Cancer Centre,  
Rickmansworth Road,  
Northwood,  
Middlesex HA6 2RN  
**Telephone** 01923-844190  
**Fax** 01923-844840  
**Email** [marcia.hall@nhs.net](mailto:marcia.hall@nhs.net)

**Funding:** This work was supported by the Cancer Treatment and Research Trust and the National Cancer Research Institute.

### Acknowledgements:

We would like to thank the following investigators for contributing patients: Dr D E Parkin, Aberdeen Royal Infirmary; Dr N Reed and Dr R Glasspool, Beatson Cancer Centre, Glasgow; Dr J A Green, Clatterbridge Centre for Oncology; Dr A Lamont, Colchester; Dr S Pearson, Cumberland Infirmary, Carlisle; Dr A Horne Great Western Hospital, Swindon; Dr A Montes and Dr A Winship, Guy's Hospital London; Dr S Sundar, Kingston Hospital, Sutton; Dr O McNally, Musgrove Hospital Taunton; Dr A Hughes Queen Elizabeth Hospital Gateshead; Dr S Essapen, Royal Surrey County Hospital, Guildford; Dr Melanie Harvey, Salisbury District Hospital; Dr C Green, Southampton Hospital and Dr Tim Perren, St James' University Hospital, Leeds.



Using CA125 to assess cytostatic agents in ovary cancer

## Abstract

1  
2  
3 **Objective:** New strategies are required to rapidly identify novel  
4  
5  
6  
7  
8  
9  
10  
11  
12  
13  
14  
15  
16  
17  
18  
19  
20  
21  
22  
23  
24  
25  
26  
27  
28  
29  
30  
31  
32  
33  
34  
35  
36  
37  
38  
39  
40  
41  
42  
43  
44  
45  
46  
47  
48  
49  
50  
51  
52  
53  
54  
55  
56  
57  
58  
59  
60  
61  
62  
63  
64  
65  
66  
67  
68  
69  
70  
71  
72  
73  
74  
75  
76  
77  
78  
79  
80  
81  
82  
83  
84  
85  
86  
87  
88  
89  
90  
91  
92  
93  
94  
95  
96  
97  
98  
99  
100  
101  
102  
103  
104  
105  
106  
107  
108  
109  
110  
111  
112  
113  
114  
115  
116  
117  
118  
119  
120  
121  
122  
123  
124  
125  
126  
127  
128  
129  
130  
131  
132  
133  
134  
135  
136  
137  
138  
139  
140  
141  
142  
143  
144  
145  
146  
147  
148  
149  
150  
151  
152  
153  
154  
155  
156  
157  
158  
159  
160  
161  
162  
163  
164  
165  
166  
167  
168  
169  
170  
171  
172  
173  
174  
175  
176  
177  
178  
179  
180  
181  
182  
183  
184  
185  
186  
187  
188  
189  
190  
191  
192  
193  
194  
195  
196  
197  
198  
199  
200  
201  
202  
203  
204  
205  
206  
207  
208  
209  
210  
211  
212  
213  
214  
215  
216  
217  
218  
219  
220  
221  
222  
223  
224  
225  
226  
227  
228  
229  
230  
231  
232  
233  
234  
235  
236  
237  
238  
239  
240  
241  
242  
243  
244  
245  
246  
247  
248  
249  
250  
251  
252  
253  
254  
255  
256  
257  
258  
259  
260  
261  
262  
263  
264  
265  
266  
267  
268  
269  
270  
271  
272  
273  
274  
275  
276  
277  
278  
279  
280  
281  
282  
283  
284  
285  
286  
287  
288  
289  
290  
291  
292  
293  
294  
295  
296  
297  
298  
299  
300  
301  
302  
303  
304  
305  
306  
307  
308  
309  
310  
311  
312  
313  
314  
315  
316  
317  
318  
319  
320  
321  
322  
323  
324  
325  
326  
327  
328  
329  
330  
331  
332  
333  
334  
335  
336  
337  
338  
339  
340  
341  
342  
343  
344  
345  
346  
347  
348  
349  
350  
351  
352  
353  
354  
355  
356  
357  
358  
359  
360  
361  
362  
363  
364  
365  
366  
367  
368  
369  
370  
371  
372  
373  
374  
375  
376  
377  
378  
379  
380  
381  
382  
383  
384  
385  
386  
387  
388  
389  
390  
391  
392  
393  
394  
395  
396  
397  
398  
399  
400  
401  
402  
403  
404  
405  
406  
407  
408  
409  
410  
411  
412  
413  
414  
415  
416  
417  
418  
419  
420  
421  
422  
423  
424  
425  
426  
427  
428  
429  
430  
431  
432  
433  
434  
435  
436  
437  
438  
439  
440  
441  
442  
443  
444  
445  
446  
447  
448  
449  
450  
451  
452  
453  
454  
455  
456  
457  
458  
459  
460  
461  
462  
463  
464  
465  
466  
467  
468  
469  
470  
471  
472  
473  
474  
475  
476  
477  
478  
479  
480  
481  
482  
483  
484  
485  
486  
487  
488  
489  
490  
491  
492  
493  
494  
495  
496  
497  
498  
499  
500  
501  
502  
503  
504  
505  
506  
507  
508  
509  
510  
511  
512  
513  
514  
515  
516  
517  
518  
519  
520  
521  
522  
523  
524  
525  
526  
527  
528  
529  
530  
531  
532  
533  
534  
535  
536  
537  
538  
539  
540  
541  
542  
543  
544  
545  
546  
547  
548  
549  
550  
551  
552  
553  
554  
555  
556  
557  
558  
559  
560  
561  
562  
563  
564  
565  
566  
567  
568  
569  
570  
571  
572  
573  
574  
575  
576  
577  
578  
579  
580  
581  
582  
583  
584  
585  
586  
587  
588  
589  
590  
591  
592  
593  
594  
595  
596  
597  
598  
599  
600  
601  
602  
603  
604  
605  
606  
607  
608  
609  
610  
611  
612  
613  
614  
615  
616  
617  
618  
619  
620  
621  
622  
623  
624  
625  
626  
627  
628  
629  
630  
631  
632  
633  
634  
635  
636  
637  
638  
639  
640  
641  
642  
643  
644  
645  
646  
647  
648  
649  
650  
651  
652  
653  
654  
655  
656  
657  
658  
659  
660  
661  
662  
663  
664  
665  
666  
667  
668  
669  
670  
671  
672  
673  
674  
675  
676  
677  
678  
679  
680  
681  
682  
683  
684  
685  
686  
687  
688  
689  
690  
691  
692  
693  
694  
695  
696  
697  
698  
699  
700  
701  
702  
703  
704  
705  
706  
707  
708  
709  
710  
711  
712  
713  
714  
715  
716  
717  
718  
719  
720  
721  
722  
723  
724  
725  
726  
727  
728  
729  
730  
731  
732  
733  
734  
735  
736  
737  
738  
739  
740  
741  
742  
743  
744  
745  
746  
747  
748  
749  
750  
751  
752  
753  
754  
755  
756  
757  
758  
759  
760  
761  
762  
763  
764  
765  
766  
767  
768  
769  
770  
771  
772  
773  
774  
775  
776  
777  
778  
779  
780  
781  
782  
783  
784  
785  
786  
787  
788  
789  
790  
791  
792  
793  
794  
795  
796  
797  
798  
799  
800  
801  
802  
803  
804  
805  
806  
807  
808  
809  
810  
811  
812  
813  
814  
815  
816  
817  
818  
819  
820  
821  
822  
823  
824  
825  
826  
827  
828  
829  
830  
831  
832  
833  
834  
835  
836  
837  
838  
839  
840  
841  
842  
843  
844  
845  
846  
847  
848  
849  
850  
851  
852  
853  
854  
855  
856  
857  
858  
859  
860  
861  
862  
863  
864  
865  
866  
867  
868  
869  
870  
871  
872  
873  
874  
875  
876  
877  
878  
879  
880  
881  
882  
883  
884  
885  
886  
887  
888  
889  
890  
891  
892  
893  
894  
895  
896  
897  
898  
899  
900  
901  
902  
903  
904  
905  
906  
907  
908  
909  
910  
911  
912  
913  
914  
915  
916  
917  
918  
919  
920  
921  
922  
923  
924  
925  
926  
927  
928  
929  
930  
931  
932  
933  
934  
935  
936  
937  
938  
939  
940  
941  
942  
943  
944  
945  
946  
947  
948  
949  
950  
951  
952  
953  
954  
955  
956  
957  
958  
959  
960  
961  
962  
963  
964  
965  
966  
967  
968  
969  
970  
971  
972  
973  
974  
975  
976  
977  
978  
979  
980  
981  
982  
983  
984  
985  
986  
987  
988  
989  
990  
991  
992  
993  
994  
995  
996  
997  
998  
999  
1000

**Objective:** New strategies are required to rapidly identify novel cytostatic agents before embarking on large randomised trials. This study investigates whether a change in rate of rise (slope) of serum CA125 from before to after starting a novel agent could be used to identify cytostatic agents. Tamoxifen was used to validate this hypothesis.

**Methods:** Asymptomatic patients with relapsed ovarian cancer who had responded to chemotherapy were enrolled and had CA125 measurements taken every 4 weeks, then more frequently when rising. Once levels reached 4 times upper limit of normal or nadir, they started continuous tamoxifen 20 mg daily, as well as fortnightly CA125 measurements until symptomatic progression. Due to the potentially non-linear relationship of CA125 over time it was felt that to enable normal approximations to be utilised a natural logarithmic standard transformation  $[\ln(\text{CA125})]$  was the most suitable to improve linearity above the common logarithmic transformation to base 10.

**Results:** From 235 recruited patients, 81 started tamoxifen and had at least 4 CA125 measurements taken before and 4 CA125 measurements taken after starting tamoxifen, respectively. The

1 mean regression slopes from using at least 4  $\ln(\text{CA125})$   
2  
3 measurements immediately before and after starting tamoxifen were  
4  
5 0.0149 and 0.0093  $[\ln(\text{CA125})/\text{day}]$  respectively. This difference is  
6  
7 statistically significant,  $P = 0.001$ . Therefore in a future trial with a  
8  
9 novel agent, at least as effective as tamoxifen, using this effect size,  
10  
11 the number of evaluable patients needed, at significance level of 5%  
12  
13 and power of 80%, is 56.  
14  
15  
16  
17  
18  
19

20 **Conclusions:** Further validation of this methodology is required but  
21  
22 there is potential to use comparison of mean regression slopes of  
23  
24  $\ln(\text{CA125})$  as an interim analysis measure of efficacy for novel  
25  
26  
27  
28  
29 cytostatic agents in relapsed ovarian cancer.  
30  
31  
32  
33  
34  
35  
36  
37  
38  
39  
40  
41  
42  
43  
44  
45  
46  
47  
48  
49  
50  
51  
52  
53  
54  
55  
56  
57  
58  
59  
60  
61  
62  
63  
64  
65

## Introduction

1  
2  
3 The activity of cytotoxic chemotherapy is conventionally assessed by  
4  
5 clinical and radiological measurement of change in size of tumour  
6  
7 masses. Internationally standardised radiological criteria (RECIST)  
8  
9 are used to assess response<sup>1</sup>. However, many new agents with  
10  
11 potential anti-cancer activity are predicted to be cytostatic rather  
12  
13 than cytotoxic. These approaches may lead to stabilisation of tumour  
14  
15 growth rather than a rapid shrinkage. The danger of using  
16  
17 radiological response criteria to assess the clinical utility of these  
18  
19 agents is that active agents are not always detected in phase II  
20  
21 clinical trials. For example in patients with advanced gastrointestinal  
22  
23 stromal tumour (GIST), responses are not always accompanied by  
24  
25 reductions in tumour size<sup>2</sup>. New approaches are therefore required  
26  
27 to assess the activity of cytostatic agents in phase II clinical trials to  
28  
29 minimize the chance of active cytostatic agents being discarded. One  
30  
31 way to prove a drug has cytostatic activity would be to show that  
32  
33 tumour growth in individual patients was slower after starting on a  
34  
35 novel agent than before. In most types of cancer there is not a  
36  
37 reasonable time frame where it is acceptable to observe tumour  
38  
39 growth without offering therapy. However, in ovary cancer, most  
40  
41 patients have rising levels of the serum tumour marker, CA125, for a  
42  
43  
44  
45  
46  
47  
48  
49  
50  
51  
52  
53  
54  
55  
56  
57  
58  
59  
60  
61  
62  
63  
64  
65

1 period whilst remaining asymptomatic. There is an average lead-  
2  
3 time of four months between the initial rise of the CA125 and  
4  
5 symptomatic relapse of ovarian cancer, generally requiring  
6  
7 treatment. It has been shown that it is preferable to delay  
8  
9 chemotherapy treatment in such relapsing patients until they  
10  
11 develop symptoms<sup>3</sup>. We postulated that this would be a potential  
12  
13 group of patients in whom the rate of change of CA125 levels, before  
14  
15 and after initiation of a novel drug could be an alternative method of  
16  
17 identifying activity worthy of trial continuation.  
18  
19  
20  
21  
22  
23  
24

25  
26 The first stage of this project was to determine whether the rate of  
27  
28 rise of CA125 is consistent enough to allow comparison of (rate of  
29  
30 rise) slopes before and after the introduction of a treatment. This  
31  
32 required sufficient CA125 measurements from patients on no  
33  
34 therapy or placebo. A pilot study ascertained that most patients with  
35  
36 relapsed ovarian cancer would not accept intense CA125  
37  
38 measurements, if there were no prospect of some therapy once the  
39  
40 CA125 levels started rising. Although such asymptomatic patients  
41  
42 with rising serum CA125 levels remain anxious about recommencing  
43  
44 treatment, many accept a less toxic therapy provided they know that  
45  
46 they will be closely monitored and able to start cytotoxic treatment  
47  
48 again as soon as they become symptomatic.  
49  
50  
51  
52  
53  
54  
55  
56  
57  
58  
59  
60  
61  
62  
63  
64  
65

1 Tamoxifen has been shown to have activity in approximately 15% of  
2 patients with relapsed ovarian cancer<sup>4</sup> and is an ideal agent with  
3 minimal toxicity. The tolerability of tamoxifen and its modest  
4 activity in ovarian cancer patients (akin to placebo in most), would  
5 allow us to determine any variability in rate of rise of CA125, as well  
6 as the chance of detecting some change in the 15% of patients where  
7 it is active. Figure 1 shows graphically an outline of what was  
8 expected to occur with respect to the CA125 measured over time for  
9 such patients and a range of potential outcomes after the patients  
10 start taking tamoxifen.  
11  
12  
13  
14  
15  
16  
17  
18  
19  
20  
21  
22  
23  
24  
25  
26  
27  
28  
29  
30

## 31 **Methods**

32 We prospectively registered women between May 2005 and  
33 November 2009 with histologically confirmed *recurrent* epithelial  
34 ovarian, fallopian tube or primary peritoneal cancer who had  
35 completed and responded to treatment for first relapse (i.e second  
36 course of chemotherapy, NOT after primary adjuvant / neoadjuvant  
37 therapy), with a fall in their CA125 of at least 50% by the end of  
38 treatment. A protocol amendment in April 2009 allowed the  
39 registration of patients who had responded to 2<sup>nd</sup>, 3<sup>rd</sup> and 4<sup>th</sup> line  
40 relapse therapy as long as their CA125 had fallen by 50% by the end  
41  
42  
43  
44  
45  
46  
47  
48  
49  
50  
51  
52  
53  
54  
55  
56  
57  
58  
59  
60  
61  
62  
63  
64  
65

1 of treatment. No measurable disease was required for trial  
2  
3 registration. Patients were ECOG performance status 0-2 and had no  
4  
5 symptoms of ovarian cancer requiring chemotherapy. None of the  
6  
7 patients were taking any hormone therapy and all other concomitant  
8  
9 medications were at a stable dose throughout the trial period.  
10  
11 Adequate end organ function was required in all patients including:  
12  
13 Hb >10g/dl, WCC > 2.5 x 10<sup>9</sup>/l, plts >100 x 10<sup>9</sup>/l, creatinine, AST and  
14  
15 or ALT < 2 x upper limit of normal, and bilirubin < 1.5x upper limit  
16  
17 normal.  
18  
19  
20  
21  
22  
23  
24  
25  
26  
27  
28

29 For each registered patient a baseline or nadir CA125 was  
30  
31 documented, defined as the lowest CA125 estimate, obtained at least  
32  
33 3 weeks after completing chemotherapy for relapse. Once registered,  
34  
35 patients had serum CA125 concentrations measured monthly, with  
36  
37 all serial assays of an individual being performed in the same  
38  
39 laboratory. If a patient's CA125 level started rising, the frequency of  
40  
41 the CA125 levels was increased to fortnightly. When (if) the CA125  
42  
43 level reached four times the upper limit of normal or the patient's  
44  
45 registered lowest nadir level (if higher than normal), the patient was  
46  
47 contacted, imaging of thorax, abdomen and pelvis was performed and  
48  
49 they were started on tamoxifen, 20mg daily. Provided these patients  
50  
51  
52  
53  
54  
55  
56  
57  
58  
59  
60  
61  
62  
63  
64  
65



1 remained stable and asymptomatic whilst taking tamoxifen, CA125  
2  
3 measurements were continued fortnightly.  
4  
5  
6  
7

8  
9 CT scans were performed every three months in accordance with  
10  
11 local practice but responses by RECIST criteria were not expected in  
12  
13 this study. Radiological assessment was predominantly for safety  
14  
15 purposes in the unlikely event that women have significantly  
16  
17 progressive disease without a rise in CA 125. Similarly, if at any  
18  
19 point, a registered patient became symptomatic from their ovarian  
20  
21 cancer, tamoxifen and study related CA125 measurements were  
22  
23 stopped, they were withdrawn from the study and treated in  
24  
25 accordance with local practice. Asymptomatic patients with a rising  
26  
27 CA125 level whilst taking tamoxifen were allowed to continue on  
28  
29 study until they became symptomatic.  
30  
31  
32  
33  
34  
35  
36  
37  
38  
39  
40  
41  
42

43 The ethics committee approved the protocol and the study was  
44  
45 conducted in accordance with the Principles of Good Clinical Practice  
46  
47 and the Declaration of Helsinki. All patients provided written  
48  
49 informed consent.  
50  
51  
52  
53  
54  
55  
56  
57  
58  
59  
60  
61  
62  
63  
64  
65

## Statistical Methods

1  
2  
3 CA125 values are not naturally normally distributed so a log  
4  
5 transformation was used to enable linear associations to be  
6  
7 examined. Linear regression lines were fitted to each patients data to  
8  
9 assess any increase or decrease in  $\ln(\text{CA125})$  levels over the study  
10  
11 duration, before and after treatment. It was agreed that at least 4  
12  
13 CA125 measurements were required to fit these linear regression  
14  
15 lines and statistically assess the potential rise/fall of a patient's  
16  
17 CA125 levels before and after treatment with tamoxifen. All patients  
18  
19 **were included until clinical progression to maximise evaluability and**  
20  
21 **sample size.**  
22  
23  
24  
25  
26  
27  
28  
29  
30  
31  
32  
33

34  
35 The percentage of patients with a log linear rise was calculated to  
36  
37 ensure that sufficient numbers existed to be able to examine the  
38  
39 association of log linear rise before and after starting tamoxifen. The  
40  
41 consistency of the log linear slopes was then examined to determine  
42  
43 whether comparison before and after introduction of tamoxifen was  
44  
45 possible. The individual slopes obtained were then compared using a  
46  
47  
48  
49  
50  
51  
52  
53  
54  
55  
56  
57  
58  
59  
60  
61  
62  
63  
64  
65

1 It could be argued that examining the change in slopes of CA125  
2 levels over time, before and after starting tamoxifen could be  
3 misleading due to the possibility of regression to the mean. We  
4 therefore also examined the  $\ln(\text{CA125})$  slopes of other registered  
5 patients who were on trial and had four CA125 measurements before  
6 starting or without starting tamoxifen – usually because they became  
7 too symptomatic requiring immediate chemotherapy - to act as a  
8 comparator group.  
9  
10  
11  
12  
13  
14  
15  
16  
17  
18  
19  
20  
21  
22  
23  
24  
25

26 Finally the number of patients required to detect a difference in  
27  $\ln(\text{CA125})$  slopes, before and after starting tamoxifen, was calculated.  
28 This was to determine whether using a comparison of  $\ln(\text{CA125})$   
29 slopes before and after introduction of a novel agent might allow  
30 more rapid decisions concerning the efficacy of these drugs,  
31 particularly if they are not expected to show actual tumour shrinkage  
32 measurable by RECIST.  
33  
34  
35  
36  
37  
38  
39  
40  
41  
42  
43  
44  
45  
46

## 47 **Results**

48 235 women were recruited to the study and provided at least one  
49 trial CA125 sample. 204 patients were recruited after their first  
50 relapse therapy. The mean (SD) age in years at the time of  
51 consenting for study registration was 64.4 (11.0).  
52  
53  
54  
55  
56  
57  
58  
59  
60  
61  
62  
63  
64  
65

1  
2  
3 Fifty-three percent of the study group received tamoxifen (125/235),  
4  
5 but of these only 81 patients had at least four CA125 measurements  
6  
7 collected before **and** after the introduction of tamoxifen. The  
8  
9 remaining 44 patients had fewer than four CA125 measurements,  
10  
11 either before or after, or both and were excluded from log linear  
12  
13 slope analysis.  
14  
15  
16  
17  
18  
19  
20  
21  
22

23 110 patients (47%) in the study never started tamoxifen, because  
24  
25 they required chemotherapy treatment for their symptomatic  
26  
27 ovarian cancer before this. Only 74 of these patients had at least four  
28  
29 CA125 measurements before coming off study, 36 patients had fewer  
30  
31 than four CA125 measurements prior to requiring chemotherapy and  
32  
33 coming off study.  
34  
35  
36  
37  
38  
39  
40  
41  
42

43 The mean (SD) baseline (nadir) CA125 value for the 81 patients who  
44  
45 had at least four CA125 measurements before and after starting  
46  
47 tamoxifen was 61.5 (106.4). Table 1 shows the average slope over  
48  
49 time for the 81 evaluable patients before and after receiving  
50  
51 tamoxifen. Figure 2 illustrates graphically CA125 plotted over time  
52  
53 for these 81 patients.  
54  
55  
56  
57  
58  
59  
60  
61  
62  
63  
64  
65

1  
2  
3 The mean slopes before and after treatment both significantly  
4  
5 increased over time in this group. A paired t-test revealed that there  
6  
7 was a significant difference in the rates of rise across patients over  
8  
9 time before and after treatment (Table 2), indicating that taking  
10  
11 tamoxifen slowed the rise in CA125 levels. Figure 3 represents this  
12  
13 graphically in a scatter plot.  
14  
15  
16  
17  
18  
19  
20  
21

22  
23 14 percent (11/81) of the patient group who received tamoxifen  
24  
25 showed a registered decline in their CA125 levels after treatment  
26  
27 with tamoxifen. 4 patients had a 50% decrease in their CA125 after  
28  
29 starting tamoxifen, confirmed and maintained for at least 28 days or  
30  
31 more, thus fulfilling the GCIG criteria of CA125 response<sup>5</sup>.  
32  
33  
34  
35  
36  
37  
38  
39

### 40 **CA125 variation and regression to the mean**

41  
42  
43 In order to explore the effect of regression to the mean in individual  
44  
45 patients, possibly accounting for the slowing of the rise of CA125  
46  
47 after starting tamoxifen, we examined the CA125 levels in patients  
48  
49 who did not start tamoxifen at all. These patients are likely to have  
50  
51 had faster growing tumours than those asymptomatic and able to  
52  
53 start tamoxifen. If regression to the mean was a significant factor, it  
54  
55  
56  
57  
58  
59  
60  
61  
62  
63  
64  
65

1 would occur in all groups of patients where CA125 is measured over  
2  
3 time. The similarity of the mean slope of 0.0131 for the non  
4  
5 tamoxifen treated group versus 0.0149 in the patients before starting  
6  
7  
8 tamoxifen suggests that regression to the mean is not having an  
9  
10 impact. It is reassuring to note that the mean change in rise in slope  
11  
12 (Table 3) of 0.0056 in those treated with tamoxifen is significantly  
13  
14 different.  
15  
16  
17  
18  
19  
20  
21

22 Seventy-four patients had at least 4 CA125 measurements and Table  
23  
24 3 shows the mean slope derived from fitting a regression line to each  
25  
26 patient's measurements after recruitment. Comparing the mean  
27  
28 slopes between this group and the pre-tamoxifen group showed a  
29  
30 non-significant difference between them.  
31  
32  
33  
34  
35  
36  
37  
38  
39

### 40 **Sample size for future trials**

41  
42 Using the mean change in slope for tamoxifen described above, the  
43  
44 number of evaluable patients required to detect an effect of a similar  
45  
46 size with a novel agent is 74 and 56 with a power of 90% and 80%,  
47  
48 respectively. However, only 81 out of 235 (34%) patients were  
49  
50 statistically evaluable therefore 218 and 165 patients respectively  
51  
52 would have to be registered and start monthly CA125 measurements.  
53  
54  
55  
56  
57  
58  
59  
60  
61  
62  
63  
64  
65

1 Although there may be an issue with bias due to the reduced number  
2 of evaluable patients in this analysis, attempting to ascertain a  
3 patient's CA125 slope based on only 2 observations pre-treatment  
4 would not be a statistically robust approach and could be potentially  
5 misleading in terms of any assumed linear relationship, the design  
6 range of evaluable values per patient were explored and made no  
7 difference to the results per se. Using four observations before and  
8 four observations after treatment were thought adequate to establish  
9 any log linear relationship. Using alternative more complex methods  
10 led to identical conclusions on a subset of these patients<sup>6</sup>.  
11  
12  
13  
14  
15  
16  
17  
18  
19  
20  
21  
22  
23  
24  
25  
26  
27  
28  
29  
30

## 31 Discussion

32 Raw CA125 measurements are not normally distributed; however,  
33 this study has shown that log transforming the CA125 levels, results  
34 in data enabling traditional linear regression methods to be used. We  
35 have shown that patients have log linear rises in CA125 levels after  
36 treatment for relapsed ovarian cancer and that these log linear rises  
37 are consistent enough for comparison before and after therapy. In  
38 this group of 81 tamoxifen treated patients, there is a significant  
39 difference ( $P = 0.001$ ) in the mean of the slopes of the  $\ln(\text{CA125})$  in  
40 patients before and after treatment with tamoxifen. The fact that a  
41  
42  
43  
44  
45  
46  
47  
48  
49  
50  
51  
52  
53  
54  
55  
56  
57  
58  
59  
60  
61  
62  
63  
64  
65

1  
2  
3  
4  
5  
6  
7  
8  
9  
10  
11  
12  
13  
14  
15  
16  
17  
18  
19  
20  
21  
22  
23  
24  
25  
26  
27  
28  
29  
30  
31  
32  
33  
34  
35  
36  
37  
38  
39  
40  
41  
42  
43  
44  
45  
46  
47  
48  
49  
50  
51  
52  
53  
54  
55  
56  
57  
58  
59  
60  
61  
62  
63  
64  
65

significance level of  $P < 0.001$  was reached with a reduced sample of 81 does not in any way jeopardise the power of this design, potentially precision may have been improved with an increased evaluability rate. The proportion of patients with a decreasing slope (14%) after treatment with tamoxifen is the same as published data which suggests that between 13 and 17% patients have a RECIST response when treated with tamoxifen<sup>7,8</sup>.

The description of the rise/fall of  $\ln(\text{CA125})$  over time in response to the introduction of tamoxifen suggests that this approach would be feasible in assessing the activity of novel agents. However, the nature of this “before and after” design of study, without the use of a separate control group, in attempting to quantify the true variability of patients is not without pitfalls due to potential regression to the mean<sup>9</sup>. We have attempted to examine this by comparing the  $\ln(\text{CA125})$  slopes of patients in the group who did NOT receive tamoxifen with the “before”  $\ln(\text{CA125})$  slope of those in the treated group. The hypothesis is that if regression to the mean is a significant factor, you would expect to see variability and different slopes in both the untreated group and the pre-treatment group. As we have shown that there is no significant difference in the mean of



1 these slopes, it is unlikely that the real change observed in the 81  
2  
3 patients before and after the start of tamoxifen was due to regression  
4  
5 to the mean.  
6  
7

8  
9  
10  
11 The results of this study have enabled us to calculate the number of  
12  
13 patients that may be required to detect a significant difference in  
14  
15  $\ln(\text{CA125})$  slopes to potentially assess other novel agents in the same  
16  
17 way. 74 and 56 evaluable patients are required for 90 and 80%  
18  
19 power respectively, this would require recruitment of 218 or 165  
20  
21 patients and is very similar to the numbers required to assess novel  
22  
23 agents using well described randomized phase II trial methods using  
24  
25 RECIST criteria. However, these methods have been developed to  
26  
27 assess cytotoxic agents where tumour shrinkage is readily apparent.  
28  
29 By contrast, this method may be useful, with drugs that are likely to  
30  
31 be cytostatic and where actual RECIST responses are not expected.  
32  
33 Currently the only way to ascertain whether a novel agent is active in  
34  
35 controlling tumor growth (cytostatic) in man is to do an initial  
36  
37 randomized phase 2 trial with progression free survival as the  
38  
39 primary endpoint. These trials require the trial drug to be given to far  
40  
41 more than 56 patients to give a go / no go decision as to whether  
42  
43 further development is justified.  
44  
45  
46  
47  
48  
49  
50  
51  
52  
53  
54  
55  
56  
57  
58  
59  
60  
61  
62  
63  
64  
65

1  
2  
3 To demonstrate how this approach could also be used in the initial  
4  
5 selection of potentially toxic cytostatic drugs, application of the  
6  
7 change in slope  $\ln(\text{CA125})$  methodology was theoretically applied to  
8  
9 the randomised tamoxifen versus thalidomide trial recently  
10  
11 reported<sup>10</sup>. In this trial, a target recruitment of 260 ovarian cancer  
12  
13 patients was planned to provide a 90% chance of proving  
14  
15 thalidomide active, however at the first interim analysis, 4.5 years  
16  
17 after trial activation, the study was halted because the PFS and OS  
18  
19 rates were 38% and 39% higher respectively in the *tamoxifen* arm.  
20  
21 Using the change in  $\ln(\text{CA125})$  slope methodology, a single arm study  
22  
23 of thalidomide, recruiting 100 patients and treating only half of these  
24  
25 for 8-12 weeks would have saved a significant number of patients  
26  
27 exposure to the toxicities of thalidomide to prove that it was inactive.  
28  
29 To further reduce exposure to potentially toxic, ineffective drugs, it  
30  
31 might be useful to explore using a doubling rather than a quadrupling  
32  
33 of nadir CA125 and to include patients with persistently rising levels  
34  
35 within the upper limit of normal<sup>11</sup>.  
36  
37  
38  
39  
40  
41  
42  
43  
44  
45  
46  
47  
48  
49  
50  
51

52  
53  
54  
55 An additional application of this methodology may be in assessment  
56  
57  
58 of slow release agents such as pegylated liposomal doxorubicin,  
59  
60  
61  
62  
63  
64  
65

1  
2  
3  
4  
5  
6  
7  
8  
9  
10  
11  
12  
13  
14  
15  
16  
17  
18  
19  
20  
21  
22  
23  
24  
25  
26  
27  
28  
29  
30  
31  
32  
33  
34  
35  
36  
37  
38  
39  
40  
41  
42  
43  
44  
45  
46  
47  
48  
49  
50  
51  
52  
53  
54  
55  
56  
57  
58  
59  
60  
61  
62  
63  
64  
65

which may result in an initial rise in CA125 (reflecting initial disease progression) because of the slow release nature of therapy, prior to 'response' <sup>12</sup>. Utilising changes in ln(CA125) slopes, asymptomatic patients on these agents could continue on the study agent, provided that there is a reduction in the rate of rise of CA125, despite it not reaching "response" by standard GCIg CA125 criteria. Disadvantages of this methodology, aside from the disappointingly high number of registered patients required for an evaluable subset, include the possibility that drugs altering CA125 shedding might result in spurious results. *In vitro* studies will be required to exclude this possibility.

Although there is a significant difference ( $P = 0.001$ ) in the mean of the slopes of the ln(CA125) in patients before and after treatment with tamoxifen, this appears to occur early after starting tamoxifen, and in most patients it is short-lived; the number of patients where the CA125 response was maintained was only 15%, identical to that described in the general literature<sup>4</sup>. So this method might also paradoxically alert one to drugs that only have a fleeting impact on ovarian cancer. It is thus important to use this method alongside standard assessments of response and progression free survival.

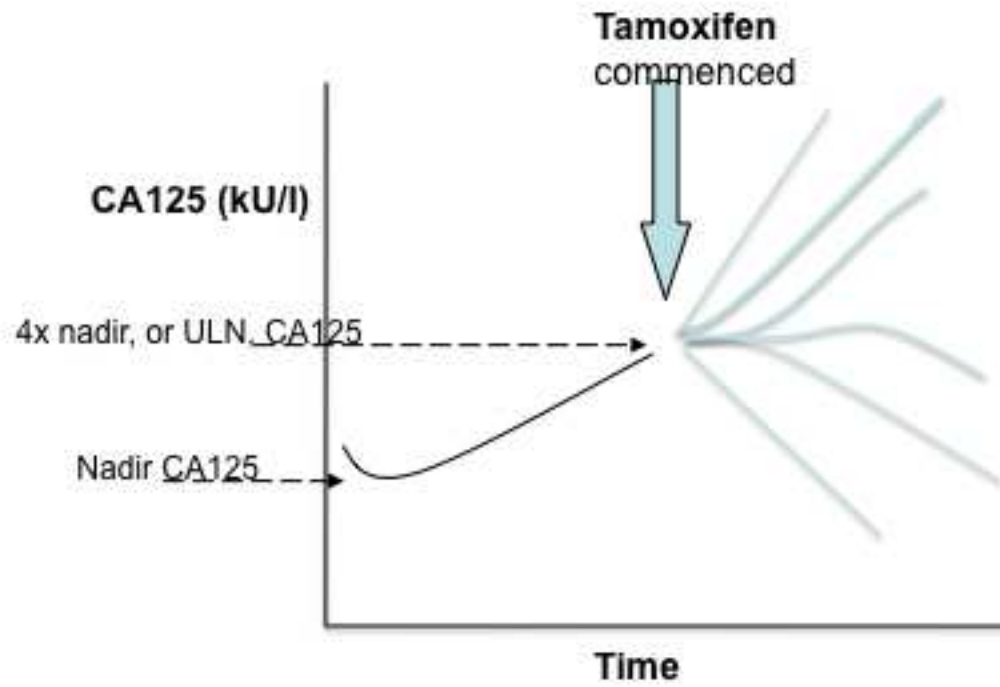
1  
2  
3 Retrospective validation of this method has not been possible as  
4  
5 there are no large data sets where CA125 measurements were  
6  
7 performed every two weeks for a reasonable period *prior* to starting  
8  
9 a trial drug, as in standard practice CA125 is generally measured 2-3  
10  
11 monthly. However this work has shown proof of concept that  
12  
13 utilizing the change in rate of rise of CA125 can be an early indicator  
14  
15 of activity of new agents, particularly at an interim analysis, where a  
16  
17 decision may be required as to whether to continue or stop early  
18  
19 phase studies in the absence of objective RECIST responses.  
20  
21 Prospective validation will require that agents shown to be active by  
22  
23 changing the CA125 doubling rate are also shown to prolong PFS /  
24  
25 OS and agents that fail to decrease the CA125 doubling rate also fail  
26  
27 to prolong PFS.  
28  
29  
30  
31  
32  
33  
34  
35  
36  
37  
38  
39  
40  
41  
42  
43  
44  
45  
46  
47  
48  
49  
50  
51  
52  
53  
54  
55  
56  
57  
58  
59  
60  
61  
62  
63  
64  
65

## References

1. Eisenhauer EA, Therasse P, Bogaerts J, et al. New response evaluation criteria in tumors: revised RECIST guideline (version 1.1). *Eur J Cancer*. 2009;45(2):228-47.
2. Desai J. Response assessment in gastrointestinal stromal tumour. *Int J Cancer* 2011;128(6):1251-8.
3. Rustin GJ, van der Burg M, Griffin CL, et al. Early versus delayed treatment of relapsed ovarian cancer (MRC OV05/EORTC 55955): a randomised trial. *Lancet* 2010;376(1155-63.).
4. Williams CJ, Simera I, Bryant A. Tamoxifen for relapse of ovarian cancer. *Cochrane Review Issue 2*, 2003
5. Rustin GJ, Vergote I, Eisenhauer E, et al. Definitions for response and progression in ovarian cancer clinical trials incorporating RECIST 1.1 and CA125 agreed by the Gynecological Cancer Intergroup (GCIg). *Int J Gynecol Cancer*. 2011 Feb;21(2):419-23.
6. Qian W, Hall M, Rustin G, & Kornbrot D. Detection of disease change from a biological marker: using CA125 in ovarian cancer as an example. *Paper presented at the RSS 2012 International Conference, Telford, UK*. Retrieved from <http://www.rssconference.org.uk/wp-content/uploads/2012/02/Abstracts-booklet.pdf>
7. Markman M, Iseminger KA, Hatch KD et al. Tamoxifen in platinum refractory ovarian cancer: a Gynaecologic Oncology Group Ancillary Report. *Gynecol Oncol* 62, 4-6 (1996).
8. Perez-Gracia JL, Carrasco EM. Tamoxifen therapy for ovarian cancer in the adjuvant and advanced settings: systematic review of the literature and implications for future research. *Gynecol Oncol*. 2002;84:201-9
9. Gore M, A'Hern R, Stankiewicz M, et al. Tumour marker levels during marimastat therapy. *Lancet* 1996;348((9022)):263-4.
10. Hurteau JA, Brady MF, Darcy KM et al. Randomised phase III trial of tamoxifen versus thalidomide in women with biochemical-recurrent-only epithelial ovarian, fallopian tube or primary peritoneal carcinoma after a complete response to first-line platinum / taxane chemotherapy with an evaluation of serum vascular growth factor (VEGF): A Gynecologic Oncology Group Study. *Gyn Oncol*. 2010;119:444-50.

1 11. Liu P-Y, Alberts D, Monk B, Brady M, Moon J, Markman M. An early signal  
2 of CA-125 progression for ovarian cancer patients receiving maintenance  
3 treatment after complete clinical response to primary therapy. *J Clin Oncol*  
4 2007;25:3615-20.  
5

6 12. Coleman R L, Gordon A, Barter J, Sun S, Rackoff W, Herzog TJ. Early  
7 changes in CA125 after treatment with pegylated liposomal doxorubicin or  
8 topotecan do not always reflect best response in recurrent ovarian cancer  
9 patients. *Oncologist* 2007;12(1):72-8  
10  
11  
12  
13  
14  
15  
16  
17  
18  
19  
20  
21  
22  
23  
24  
25  
26  
27  
28  
29  
30  
31  
32  
33  
34  
35  
36  
37  
38  
39  
40  
41  
42  
43  
44  
45  
46  
47  
48  
49  
50  
51  
52  
53  
54  
55  
56  
57  
58  
59  
60  
61  
62  
63  
64  
65



**Figure 1:**  
Possible trajectories of CA125 levels after starting tamoxifen for rising CA125 in asymptomatic patients with relapsed ovary cancer

Using CA125 to assess cytostatic agents in ovary cancer

**Table 1:**

Regression slopes for  $\ln(\text{CA125})$  before and after starting tamoxifen (n=81)  
[ $\ln(\text{CA125})/\text{day}$ ]

	Mean	Standard deviation	95% Confidence interval	P-value
Before	0.0149	0.0108	0.0125 – 0.0173	<0.0001
After	0.0093	0.0093	0.0073 – 0.0114	<0.0001



Using CA125 to assess cytostatic agents in ovary cancer

**Table 2:**

Paired slope comparison before and after starting tamoxifen  
[ln(CA125)/day]

Number of patients	Mean change	Standard deviation	95% Confidence interval	P-value
81	0.0056	0.0146	0.0024 – 0.0088	<0.001

Using CA125 to assess cytostatic agents in ovary cancer

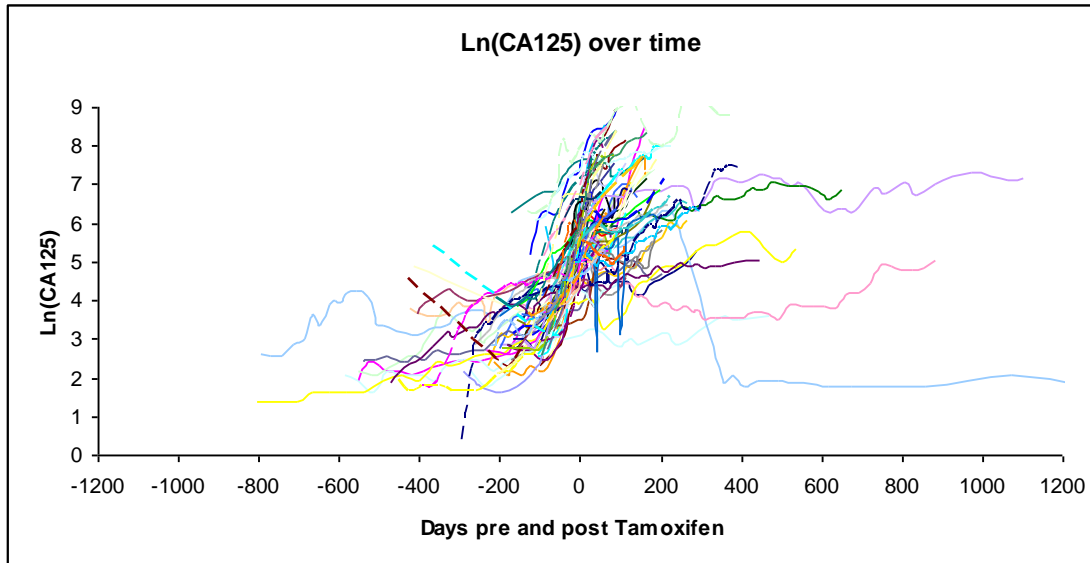
**Table 3:**

Regression slope for those patients who did not start on tamoxifen  
[ln(CA125)/day]

Number of patients	Mean	Standard deviation	95% Confidence interval	P-value
74	0.0131	0.0132	0.0100 – 0.0161	<0.0001

Using CA125 to assess cytostatic agents in ovary cancer

**Figure 2: Spaghetti plot of observed  $\ln(\text{CA125})$  over time for each patient (vertical lines represent start of tamoxifen therapy)**



Using CA125 to assess cytostatic agents in ovary cancer

**Figure 3: Scatter plot showing each patient's slope of  $\ln(\text{CA125})$  before and after treatment with tamoxifen**

